

mdf italia

 Acerbis

Anilina		
Anima	CAT.C	
Cord weave		
Delhi	CAT.G	
Delta	CAT.F	
Denim		
Dune	CAT.D	
Etis	CAT.B	
Frank	CAT.C	
Garc	CAT.C	
Hero 2	CAT.G	
Keiga	CAT.G	
Leather		
Maia	CAT.B	
Monaco	CAT.D	
Moss	CAT.G	
Nabuk		
Noah	CAT.C	
Nuvola		
Opera	CAT.G	
Paradise	CAT.E	
Parigi	CAT.F	
Portofino	CAT.E	
Ramiro	CAT.E	
Saddle-hide		
Savanna	CAT.F	
Sunday	CAT.G	
Taiga	CAT.C	
Time TL15	CAT.B	
Todi	CAT.B	
William	CAT.D	
Zero	CAT.G	



Anilina leather is intended for true connoisseurs, to those who can fully grasp the charm of genuine leather. Dyed in barrel without any kind of finishing, it is the closest to the concept of leather as nature has created it. The not forced drying, simply in the air, as it was done once, further embellishes its softness. All the natural characteristics, such as wrinkles, chiaroscuro effects and imperfections enhance its genuine beauty, making each hide a unique piece.

The inner side of the shell is covered with leather. The outer side of the shell is covered with micro-perforated leather.

*The shell of Flow collection covered with Anilina leather is fully covered with leather, micro-perforated on the outer side. The seams are always in contrast colour.*

typology	Leather
composition	European bovine
tanning	Mineral
grain	Printed
dyeing	Penetrating
finishing	Pure aniline
surface	Full grain
thickness	1,1/1,3 mm
average size	≥ 5 mq
dry friction	≥ 100 cycles
damp friction	≥ 25 cycles
flexing	≥ 10.000 cycles
light fastness	≥ 3 blue scale, dark colours
heat ageing	≥ 3 gray scale
fire resistance	ISO 1021:1-2, BS 5852 source 0-1, IMO FTP8 A652, California TB 117-2013

washing information

Avoid cleaning with aggressive products. Keep away from direct sunlight and from direct heat. Avoid contact between light and dark colours even be. Regularly dust with a soft and dry cloth.

Legenda

	Hand wash. Delicate wash. Maximum temperature: 30°/40°. Use neutral soap without optical whiteners.	CO	cotton
	Dry clean only. Do not wash in water. Treat with care when damp.	LI	linen
	Machine wash up to 40°.	PA	polyamide
	Dry cleaning with perchlorethylene, chlorinated solvents and mineral essences (perchlorethylene solvents, hydrocarbons, R113 and R11). The garment is washable with normal procedures but without the use of trichlorethylene (or trichlorethylene).	PC	acrylic
	Dry clean with tetrachloroethylene, monofluorotrichloromethane, trifluorochloroethane, hydrocarbons. Severely limit the amount of water added and/or the mechanical action and washing and drying temperatures. Do not dry clean at automatic coin-operated laundry facilities.	PES	Polyethersulfone
	Do not dry clean.	PL	polyester
	Dry clean with hydrocarbons and trifluoro-trichloroethane.	PP	polypropylene
	Do not tumble dry.	PU	polyurethane
	Warm iron (max 110° C)	RA	rami
	Warm iron (max 150° C)	SE	silk
	Do not iron.	VI	viscose
	Iron on the reverse side.	WO	wool
	Do not use chlorine bleach.	WS	cashmere
	Tumble dry.	WV	virgin wool
	Wet-cleaning.		

# Anilina

Variants



R706 col.4307

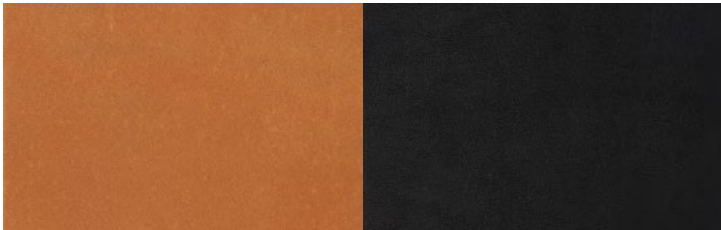
R704 col.4305

R707 col.4311



R702 col.4302

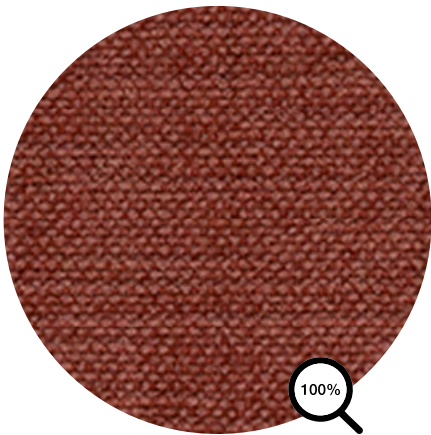
R703 col.4303



R705 col.4306

R701 col.4301





Piece-dyed with a rich palette, ANIMA blends ultra-microfiber and matte chenille in a refined jacquard texture with a strong sense of identity. With a finishing treatment that adds a subtly faded look to the fabric’s surface, there is a natural beauty to ANIMA that is elegant and captivating.

typology	<b>Fabric</b>
category	<b>C</b>
composition	<b>85%PES 15%CO</b>
height	<b>cm 140</b>
weight	<b>742 gr/ml</b>
martindale	<b>100.000</b>
pilling	<b>4/5</b>
light fastness	<b>5/6</b>
fire resistance	<b>BS5852 SOURCE 0, EN 1021 PART 1: 2006, NFPA 260:2013, CAL TB-117: 2013</b>

washing information



Legenda

	Hand wash. Delicate wash. Maximum temperature: 30°/40°. Use neutral soap without optical whiteners.
	Dry clean only. Do not wash in water. Treat with care when damp.
	Machine wash up to 40°.
	Dry cleaning with perchlorethylene, chlorinated solvents and mineral essences (perchlorethylene solvents, hydrocarbons, R113 and R11). The garment is washable with normal procedures but without the use of trichlorethylene (or trichlorethylene).
	Dry clean with tetrachloroethylene, monofluorotrichloromethane, trifluorochloroethane, hydrocarbons. Severely limit the amount of water added and/or the mechanical action and washing and drying temperatures. Do not dry clean at automatic coin-operated laundry facilities.
	Do not dry clean.
	Dry clean with hydrocarbons and trifluoro-trichloroethane.
	Do not tumble dry.
	Warm iron (max 110° C)
	Warm iron (max 150° C)
	Do not iron.
	Iron on the reverse side.
	Do not use chlorine bleach.
	Tumble dry.
	Wet-cleaning.

CO	cotton
LI	linen
PA	polyamide
PC	acrylic
PES	Polyethersulfone
PL	polyester
PP	polypropylene
PU	polyurethane
RA	rami
SE	silk
VI	viscose
WO	wool
WS	cashmere
WV	virgin wool

# Anima

Variants

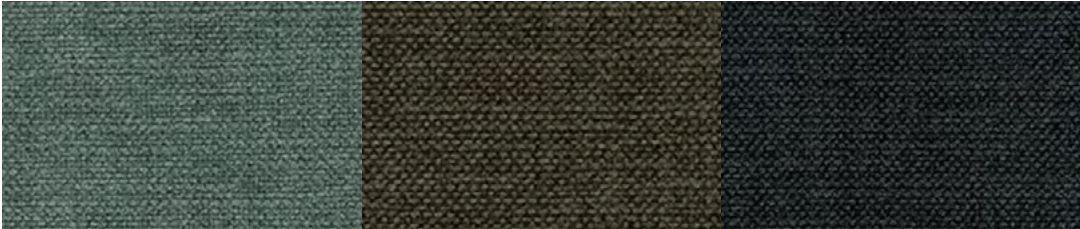
CAT.C



R632 col.05

R633 col.10

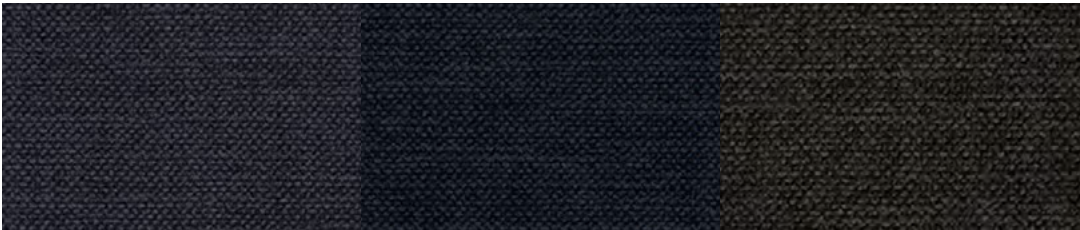
R634 col.12



R638 col.33

R637 col.30

R639 col.35



R640 col.45

R641 col.47

R642 col.53



R636 col.22

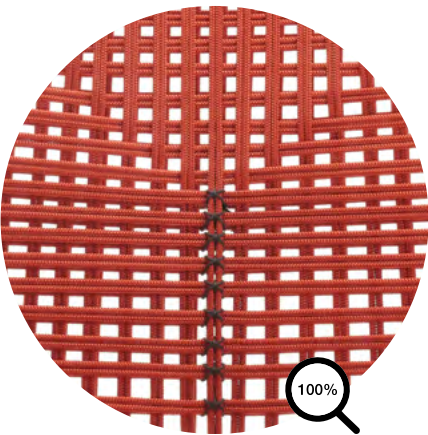
R644 col.60

R645 col.71



R635 col.19

R643 col.54



typology	Cord
tensile strength	Warp: 125 dan/5 cm - weft: 120 dan/5 cm
tear strength	Warp: 2.5 dan - weft: 2,5 dan/5 cm
light resistance	Level 6/8
heat resistance	+70°C
cold resistance	-30°C
column of water	Approx 1.000 mm

Use and maintenance

For correct washing, use a delicate neutral soap and water, and rinse thoroughly after washing, using only water. After cleaning, allow the fabric to dry correctly before folding it and putting it away, to avoid it getting mouldy.

Legenda

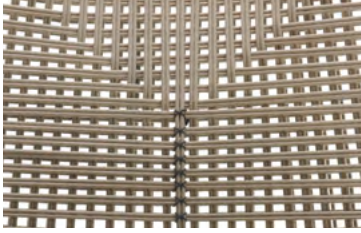
	Hand wash. Delicate wash. Maximum temperature: 30°/40°. Use neutral soap without optical whiteners.
	Dry clean only. Do not wash in water. Treat with care when damp.
	Machine wash up to 40°.
	Dry cleaning with perchlorethylene, chlorinated solvents and mineral essences (perchlorethylene solvents, hydrocarbons, R113 and R11). The garment is washable with normal procedures but without the use of trichlorethylene (or trichlorethylene).
	Dry clean with tetrachloroethylene, monofluorotrichloromethane, trifluorochloroethane, hydrocarbons. Severely limit the amount of water added and/or the mechanical action and washing and drying temperatures. Do not dry clean at automatic coin-operated laundry facilities.
	Do not dry clean.
	Dry clean with hydrocarbons and trifluoro-trichloroethane.
	Do not tumble dry.
	Warm iron (max 110° C)
	Warm iron (max 150° C)
	Do not iron.
	Iron on the reverse side.
	Do not use chlorine bleach.
	Tumble dry.
	Wet-cleaning.

CO	cotton
LI	linen
PA	polyamide
PC	acrylic
PES	Polyethersulfone
PL	polyester
PP	polypropylene
PU	polyurethane
RA	rami
SE	silk
VI	viscose
WO	wool
WS	cashmere
WV	virgin wool

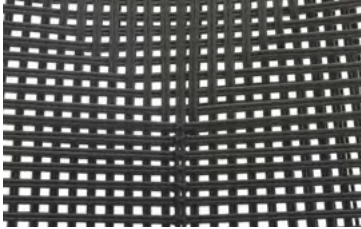
# Cord weave

Neil Twist collection

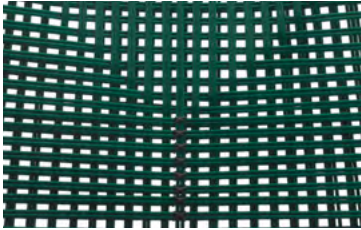
Variants



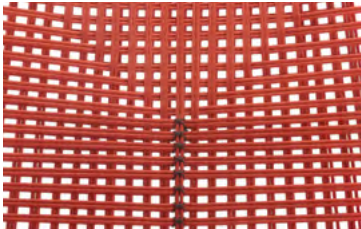
Matt ecru col.23



Matt anthracite grey col.03



Glossy English green col.17



Glossy orange col.11





Hand-woven from an irregular yarn, this raw silk is a triumph of shimmering colour and luminosity, making it soft and vibrant.



R397 col.140

R820 col.111

R821 col.153

typology	<b>Fabric</b>
category	<b>G</b>
composition	<b>100%SE</b>
height	<b>cm 135</b>

washing information

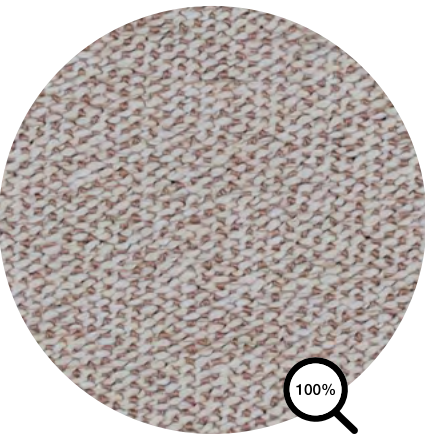


Legenda

	Hand wash. Delicate wash. Maximum temperature: 30°/40°. Use neutral soap without optical whiteners.
	Dry clean only. Do not wash in water. Treat with care when damp.
	Machine wash up to 40°.
	Dry cleaning with perchlorethylene, chlorinated solvents and mineral essences (perchlorethylene solvents, hydrocarbons, R113 and R11). The garment is washable with normal procedures but without the use of trichlorethylene (or trichlorethylene).
	Dry clean with tetrachloroethylene, monofluorotrichloromethane, trifluorochloroethane, hydrocarbons. Severely limit the amount of water added and/or the mechanical action and washing and drying temperatures. Do not dry clean at automatic coin-operated laundry facilities.
	Do not dry clean.
	Dry clean with hydrocarbons and trifluoro-trichloroethane.
	Do not tumble dry.
	Warm iron (max 110° C)
	Warm iron (max 150° C)
	Do not iron.
	Iron on the reverse side.
	Do not use chlorine bleach.
	Tumble dry.
	Wet-cleaning.

CO	cotton
LI	linen
PA	polyamide
PC	acrylic
PES	Polyethersulfone
PL	polyester
PP	polypropylene
PU	polyurethane
RA	rami
SE	silk
VI	viscose
WO	wool
WS	cashmere
WV	virgin wool





100% Recyclable.  
100% Non toxic (EU and USA standard).  
Anti-allergic.  
Resistant to fungus, bacteria, sunlight,  
humidity, chlorine, food stains and sweat.  
Compatible with delicate baby skin.  
Eco-friendly (low energy for cleaning,  
long lasting life cycle, easy to use).

typology	<b>Fabric</b>
category	<b>F</b>
composition	<b>88%PP 20%PL</b>
height	<b>cm 138</b>
weight	<b>920 gr/mtl</b>
martindale	<b>50.000</b>
pilling	<b>4/5</b>
light fastness	<b>5/7</b>
fire resistance	<b>Fire resistance: TB117-2013 / Cigarette BS5852.1.1979</b>

washing information



Legenda

	Hand wash. Delicate wash. Maximum temperature: 30°/40°. Use neutral soap without optical whiteners.
	Dry clean only. Do not wash in water. Treat with care when damp.
	Machine wash up to 40°.
	Dry cleaning with perchlorethylene, chlorinated solvents and mineral essences (perchlorethylene solvents, hydrocarbons, R113 and R11). The garment is washable with normal procedures but without the use of trichlorethylene (or trichlorethylene).
	Dry clean with tetrachloroethylene, monofluorotrichloromethane, trifluorochloroethane, hydrocarbons. Severely limit the amount of water added and/or the mechanical action and washing and drying temperatures. Do not dry clean at automatic coin-operated laundry facilities.
	Do not dry clean.
	Dry clean with hydrocarbons and trifluoro-trichloroethane.
	Do not tumble dry.
	Warm iron (max 110° C)
	Warm iron (max 150° C)
	Do not iron.
	Iron on the reverse side.
	Do not use chlorine bleach.
	Tumble dry.
	Wet-cleaning.

CO	cotton
LI	linen
PA	polyamide
PC	acrylic
PES	Polyethersulfone
PL	polyester
PP	polypropylene
PU	polyurethane
RA	rami
SE	silk
VI	viscose
WO	wool
WS	cashmere
WV	virgin wool

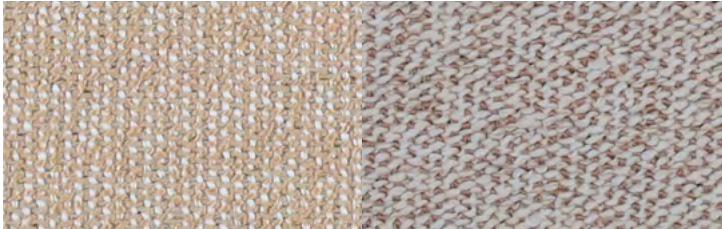
CAT.F



R692 col.015

R691 col.02/1

R698 col.80/1



R693 col.01/1

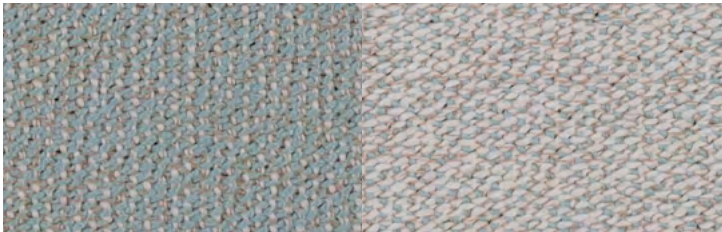
R694 col.03



R695 col.03/1

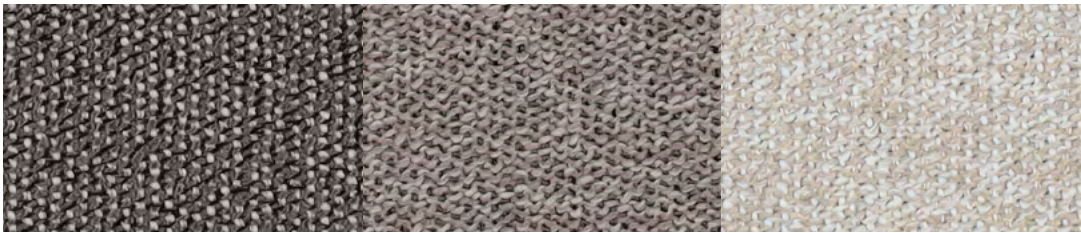
R696 col.02/3

R697 col.15/1



R699 col.01/6

R700 col.80



R720 col.01/5

R721 col.90

R722 col.01

# Delta

Variants

CAT.F



R723 col.02

R724 col.45

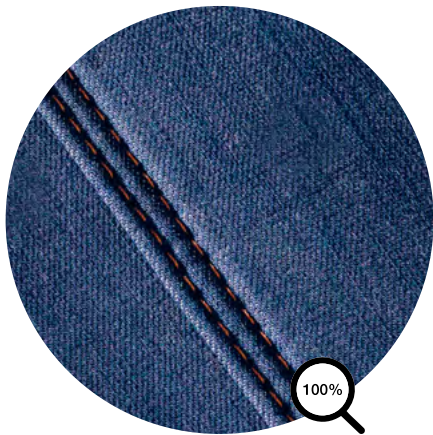


R725 col.45/1

R726 col.01/3

R727 col.01/4





typology	Fabric - Denim
composition	80%CO 18%PL 2% ELASTAM
width	cm 131
weight	290 gm/m²
martindale	50.000
pilling	4/5
light fastness	4

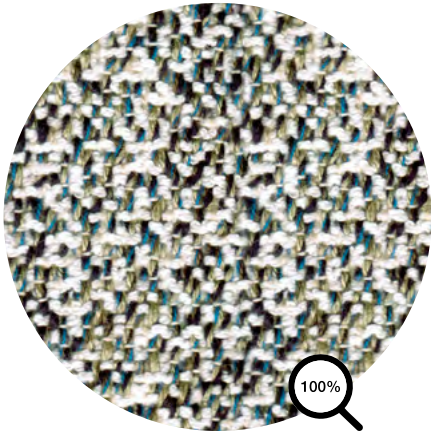
washing information



Legenda

	Hand wash. Delicate wash. Maximum temperature: 30°/40°. Use neutral soap without optical whiteners.
	Dry clean only. Do not wash in water. Treat with care when damp.
	Machine wash up to 40°.
	Dry cleaning with perchlorethylene, chlorinated solvents and mineral essences (perchlorethylene solvents, hydrocarbons, R113 and R11). The garment is washable with normal procedures but without the use of trichlorethylene (or trichlorethylene).
	Dry clean with tetrachloroethylene, monofluorotrichloromethane, trifluorochloroethane, hydrocarbons. Severely limit the amount of water added and/or the mechanical action and washing and drying temperatures. Do not dry clean at automatic coin-operated laundry facilities.
	Do not dry clean.
	Dry clean with hydrocarbons and trifluoro-trichloroethane.
	Do not tumble dry.
	Warm iron (max 110° C)
	Warm iron (max 150° C)
	Do not iron.
	Iron on the reverse side.
	Do not use chlorine bleach.
	Tumble dry.
	Wet-cleaning.

CO	cotton
LI	linen
PA	polyamide
PC	acrylic
PES	Polyethersulfone
PL	polyester
PP	polypropylene
PU	polyurethane
RA	rami
SE	silk
VI	viscose
WO	wool
WS	cashmere
WV	virgin wool



typology	Fabric
category	D
composition	50%CO 33%VI 17%LI
height	cm 140
weight	960 gr/mtl
martindale	35.000
pilling	4/5
light fastness	5
fire resistance	BS 5852 source 0, cigarette test, california TB 117-2013

washing information



Legenda

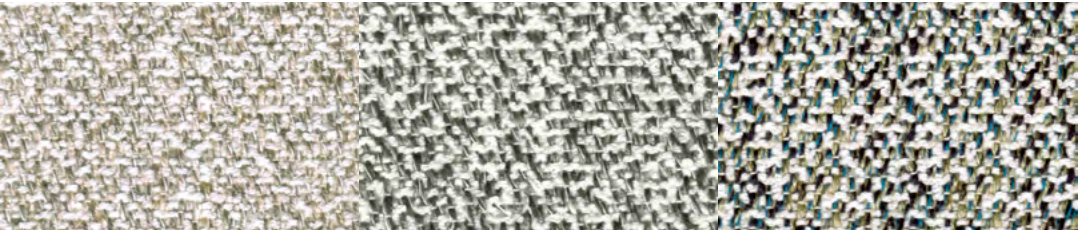
	Hand wash. Delicate wash. Maximum temperature: 30°/40°. Use neutral soap without optical whiteners.	CO	cotton
	Dry clean only. Do not wash in water. Treat with care when damp.	LI	linen
	Machine wash up to 40°.	PA	polyamide
	Dry cleaning with perchlorethylene, chlorinated solvents and mineral essences (perchlorethylene solvents, hydrocarbons, R113 and R11). The garment is washable with normal procedures but without the use of trichlorethylene (or trichlorethylene).	PC	acrylic
	Dry clean with tetrachloroethylene, monofluorotrichloromethane, trifluorochloroethane, hydrocarbons. Severely limit the amount of water added and/or the mechanical action and washing and drying temperatures. Do not dry clean at automatic coin-operated laundry facilities.	PES	Polyethersulfone
	Do not dry clean.	PL	polyester
	Dry clean with hydrocarbons and trifluoro-trichloroethane.	PP	polypropylene
	Do not tumble dry.	PU	polyurethane
	Warm iron (max 110° C)	RA	rami
	Warm iron (max 150° C)	SE	silk
	Do not iron.	VI	viscose
	Iron on the reverse side.	WO	wool
	Do not use chlorine bleach.	WS	cashmere
	Tumble dry.	WV	virgin wool
	Wet-cleaning.		



# Dune

Variants

CAT.D



R364 col.428.103

R361 col.428.039

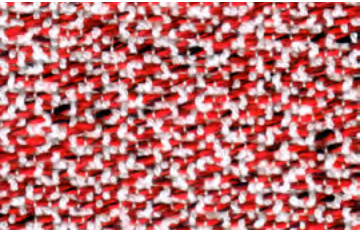
R359 col.428.034



R363 col.428.050

R357 col.428.000

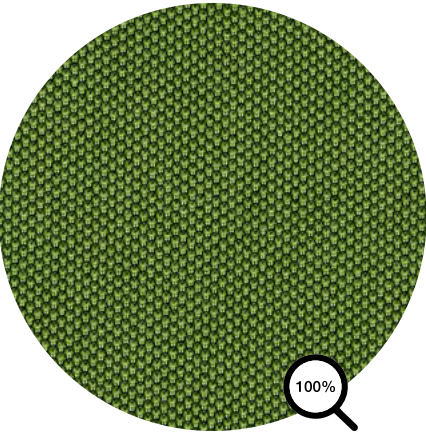
R358 col.428.010



R360 col.428.035



R362 col.428.043



typology	<b>Fabric</b>
category	<b>B</b>
composition	<b>100%PL</b>
height	<b>cm 140</b>
weight	<b>525 gr/mtl</b>
martindale	<b>100.000</b>
pilling	<b>5</b>
light fastness	<b>5/6</b>

100%PL - 100% recycled polyester

washing information



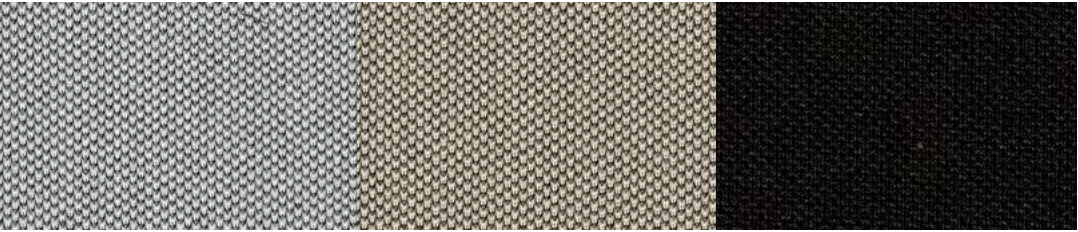
Legenda

	Hand wash. Delicate wash. Maximum temperature: 30°/40°. Use neutral soap without optical whiteners.
	Dry clean only. Do not wash in water. Treat with care when damp.
	Machine wash up to 40°.
	Dry cleaning with perchlorethylene, chlorinated solvents and mineral essences (perchlorethylene solvents, hydrocarbons, R113 and R11). The garment is washable with normal procedures but without the use of trichlorethylene (or trichlorethylene).
	Dry clean with tetrachloroethylene, monofluorotrichloromethane, trifluorochloroethane, hydrocarbons. Severely limit the amount of water added and/or the mechanical action and washing and drying temperatures. Do not dry clean at automatic coin-operated laundry facilities.
	Do not dry clean.
	Dry clean with hydrocarbons and trifluoro-trichloroethane.
	Do not tumble dry.
	Warm iron (max 110° C)
	Warm iron (max 150° C)
	Do not iron.
	Iron on the reverse side.
	Do not use chlorine bleach.
	Tumble dry.
	Wet-cleaning.

CO	cotton
LI	linen
PA	polyamide
PC	acrylic
PES	Polyethersulfone
PL	polyester
PP	polypropylene
PU	polyurethane
RA	rami
SE	silk
VI	viscose
WO	wool
WS	cashmere
WV	virgin wool



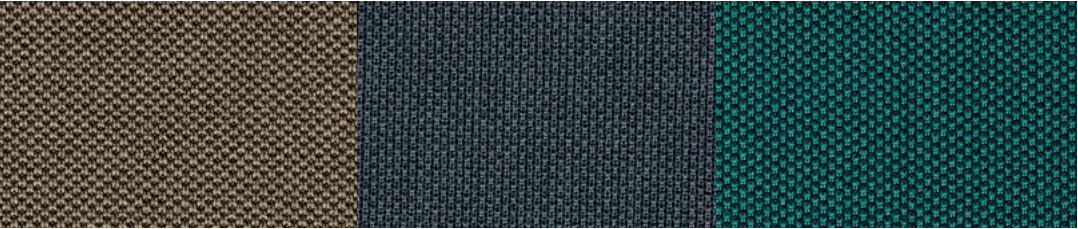
CAT.B



R629 col.36

R621 col.16

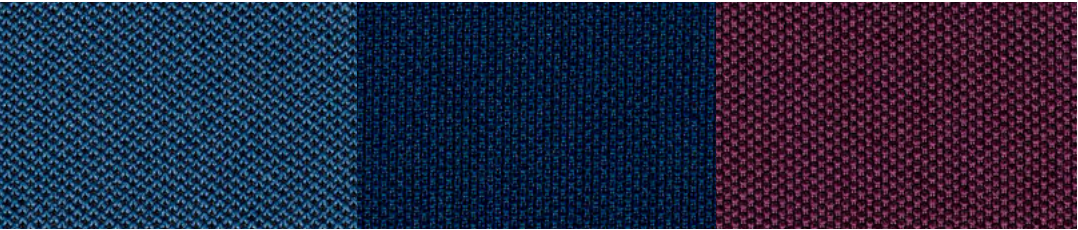
R631 col.40



R622 col.17

R630 col.39

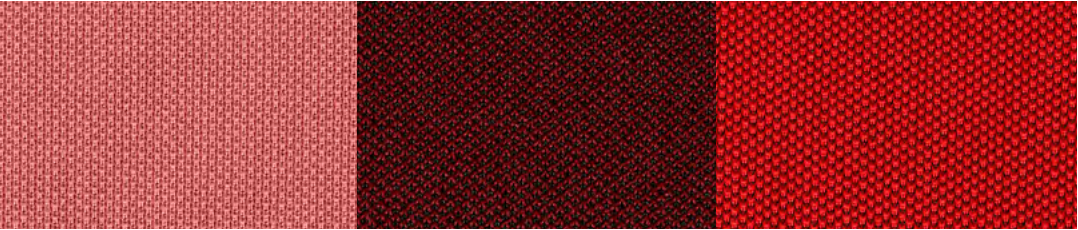
R626 col.27



R625 col.22

R624 col.21

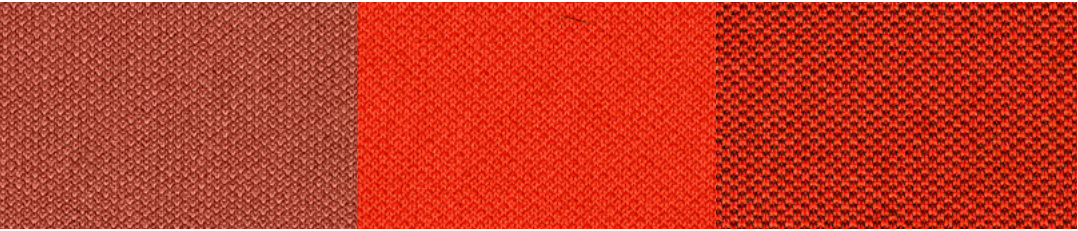
R623 col.19



R616 col.6

R614 col.1

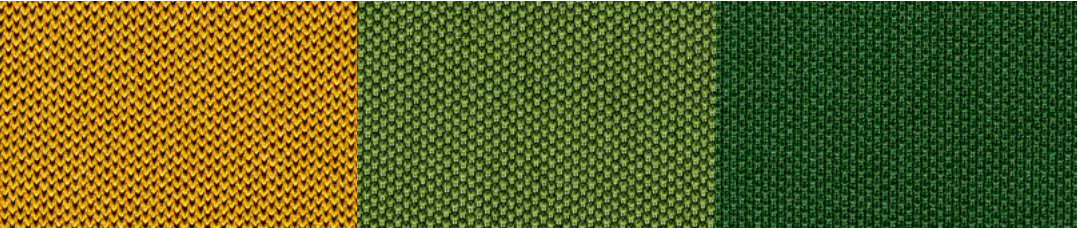
R615 col.2



R617 col.7

R619 col.9

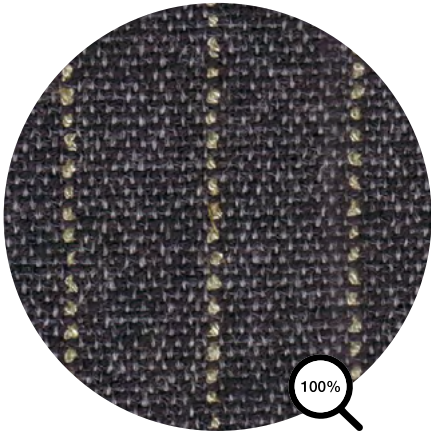
R618 col.8



R620 col.11

R628 col.32

R627 col.31



typology	Fabric
category	C
composition	52%CO 20%VI 18%WO 10%LI
height	cm 140
weight	650 gr/mtl
martindale	30.000
pilling	3/4
light fastness	4/5
fire resistance	BS 5852 source 0, cigarette test, california TB 117-2013

washing information



Legenda

	Hand wash. Delicate wash. Maximum temperature: 30°/40°. Use neutral soap without optical whiteners.
	Dry clean only. Do not wash in water. Treat with care when damp.
	Machine wash up to 40°.
	Dry cleaning with perchlorethylene, chlorinated solvents and mineral essences (perchlorethylene solvents, hydrocarbons, R113 and R11). The garment is washable with normal procedures but without the use of trichlorethylene (or trichlorethylene).
	Dry clean with tetrachloroethylene, monofluorotrichloromethane, trifluorochloroethane, hydrocarbons. Severely limit the amount of water added and/or the mechanical action and washing and drying temperatures. Do not dry clean at automatic coin-operated laundry facilities.
	Do not dry clean.
	Dry clean with hydrocarbons and trifluoro-trichloroethane.
	Do not tumble dry.
	Warm iron (max 110° C)
	Warm iron (max 150° C)
	Do not iron.
	Iron on the reverse side.
	Do not use chlorine bleach.
	Tumble dry.
	Wet-cleaning.

CO	cotton
LI	linen
PA	polyamide
PC	acrylic
PES	Polyethersulfone
PL	polyester
PP	polypropylene
PU	polyurethane
RA	rami
SE	silk
VI	viscose
WO	wool
WS	cashmere
WV	virgin wool



# Frank

Variants

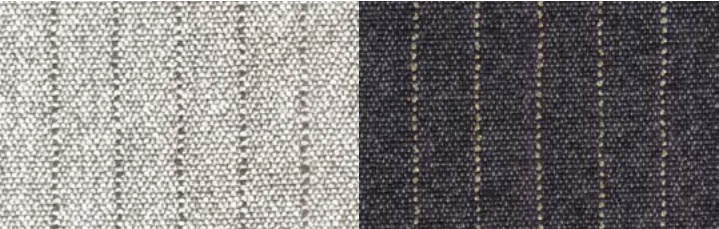
CAT.C



R354 col.419.011

R353 col.419.010

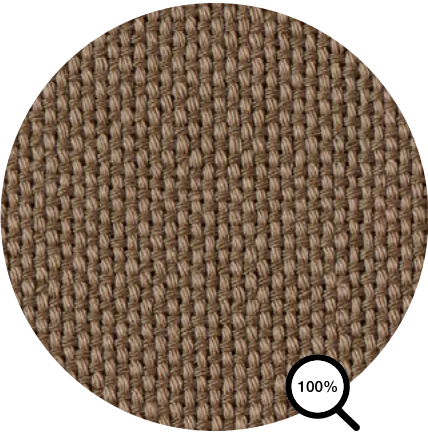
R356 col.419.041



R352 col.419.003

R355 col.419.020





typology	Fabric	washing information
category	C	
composition	100%CO	
height	cm 140	
weight	830 gr/mtl	
martindale	30.000	
pilling	3/4	
light fastness - light colours	4/5	
light fastness - dark/medium colours	5	
fire resistance	UNI EN 1021-2:2014, BS 5852 1 match test	

Legenda

	Hand wash. Delicate wash. Maximum temperature: 30°/40°. Use neutral soap without optical whiteners.	CO	cotton
	Dry clean only. Do not wash in water. Treat with care when damp.	LI	linen
	Machine wash up to 40°.	PA	polyamide
	Dry cleaning with perchlorethylene, chlorinated solvents and mineral essences (perchlorethylene solvents, hydrocarbons, R113 and R11). The garment is washable with normal procedures but without the use of trichlorethylene (or trichlorethylene).	PC	acrylic
	Dry clean with tetrachloroethylene, monofluorotrichloromethane, trifluorochloroethane, hydrocarbons. Severely limit the amount of water added and/or the mechanical action and washing and drying temperatures. Do not dry clean at automatic coin-operated laundry facilities.	PES	Polyethersulfone
	Do not dry clean.	PL	polyester
	Dry clean with hydrocarbons and trifluoro-trichloroethane.	PP	polypropylene
	Do not tumble dry.	PU	polyurethane
	Warm iron (max 110° C)	RA	rami
	Warm iron (max 150° C)	SE	silk
	Do not iron.	VI	viscose
	Iron on the reverse side.	WO	wool
	Do not use chlorine bleach.	WS	cashmere
	Tumble dry.	WV	virgin wool
	Wet-cleaning.		



R534 col.070

R533 col.046

R539 col.424

R537 col.191



R536 col.116

R535 col.111

R540 col.436

R538 col.416

# Hero 2

CAT.G

Information



typology	<b>Fabric</b>
category	<b>G</b>
composition	<b>97%WO 3%RECYCLED NY</b>
height	<b>cm 140</b>
weight	<b>580 gr/mtl</b>
martindale	<b>45.000</b>
pilling	<b>3/4</b>
light fastness	<b>5/6</b>
fire resistance	<b>fire resistance: bs 5852 part 1 (source 0 &amp; 1), en 1021-parts 1&amp;2, imo ftp code 2010 part 8, nf d 60 013, sn 198 898 5.3 with treatment, uni 9175 1im, us cal. bull. 117-2013, as/nzs 3837, class 2</b>

washing information



## Legenda

	Hand wash. Delicate wash. Maximum temperature: 30°/40°. Use neutral soap without optical whiteners.
	Dry clean only. Do not wash in water. Treat with care when damp.
	Machine wash up to 40°.
	Dry cleaning with perchlorethylene, chlorinated solvents and mineral essences (perchlorethylene solvents, hydrocarbons, R113 and R11). The garment is washable with normal procedures but without the use of trichlorethylene (or trichlorethylene).
	Dry clean with tetrachloroethylene, monofluorotrichloromethane, trifluorochloroethane, hydrocarbons. Severely limit the amount of water added and/or the mechanical action and washing and drying temperatures. Do not dry clean at automatic coin-operated laundry facilities.
	Do not dry clean.
	Dry clean with hydrocarbons and trifluoro-trichloroethane.
	Do not tumble dry.
	Warm iron (max 110° C)
	Warm iron (max 150° C)
	Do not iron.
	Iron on the reverse side.
	Do not use chlorine bleach.
	Tumble dry.
	Wet-cleaning.

CO	cotton
LI	linen
PA	polyamide
PC	acrylic
PES	Polyethersulfone
PL	polyester
PP	polypropylene
PU	polyurethane
RA	rami
SE	silk
VI	viscose
WO	wool
WS	cashmere
WV	virgin wool

# Hero 2

Variants

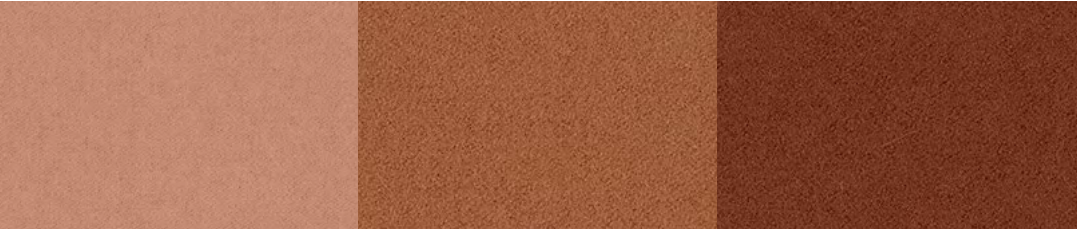
CAT.G



R665 col.102

R670 col.212

R667 col.162



R672 col.312

R673 col.352

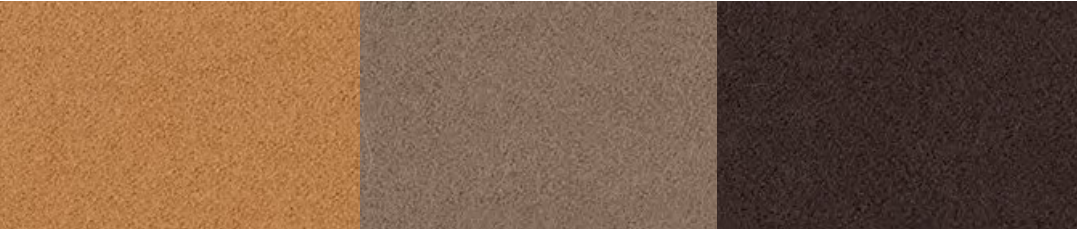
R674 col.372



R677 col.512

R678 col.542

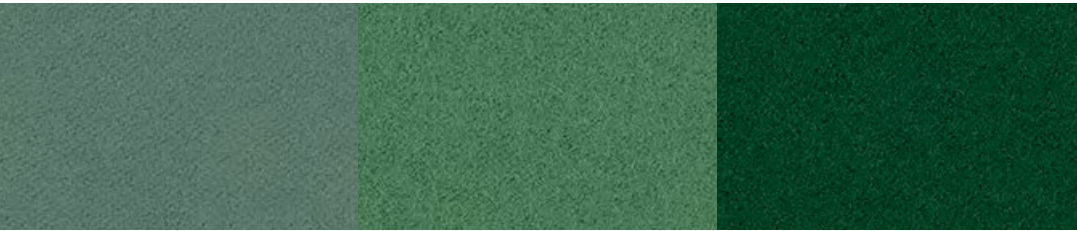
R680 col.582



R676 col.432

R671 col.242

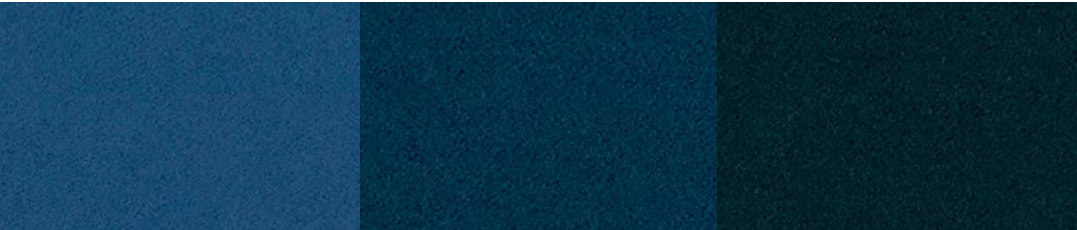
R675 col.392



R685 col.932

R686 col.942

R687 col.962



R682 col.752

R683 col.772

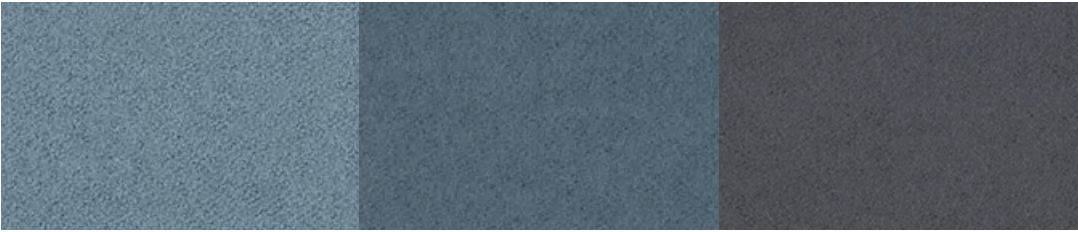
R684 col.882



# Hero 2

Variants

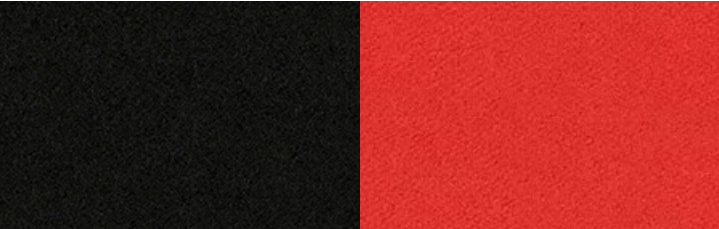
CAT.G



R681 col.732

R666 col.152

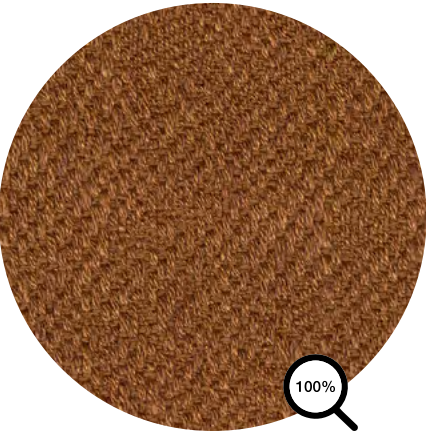
R668 col.182



R669 col.192

R679 col.552





Rich in nuance like a Nordic landscape and suitable for any furnishing style. Keiga is a foundational fabric that works with everything, vintage or modern, angular or organic, art deco or light toned Scandi. Matt wool grounds the rich structure, enlivened by the contrast from the shiny yarns. Colours drawn from Norwegian nature include pine tree, silver grey, pink blush, charcoal, russet, bear brown, black and a signature glacier blue.

typology	<b>Fabric</b>
category	<b>G</b>
composition	<b>38%WV 37%VI 16%LI 9%NY</b>
height	<b>140 cm</b>
weight	<b>740 gr/mlt</b>
martindale	<b>50.000</b>
pilling	<b>3-4</b>
light fastness	<b>6</b>
fire resistance	<b>US CAL.BULL. 117-2013, EN 1021-1/2, BS5852 PART 1, UNI 9175 1IM, BS 5852 CRIB 5 WITH TREATMENT, AS/NZS 3837 CLASS 2</b>



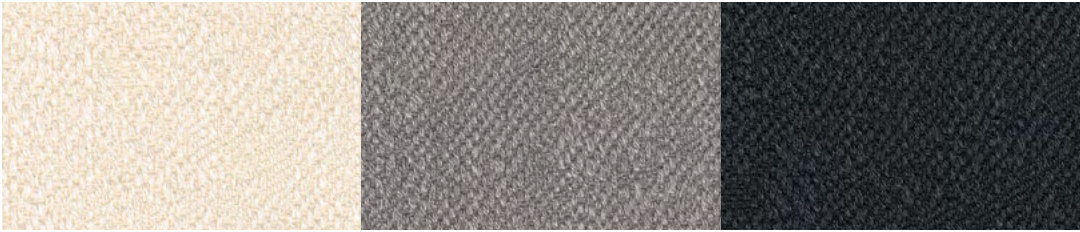
washing information



Legenda

	Hand wash. Delicate wash. Maximum temperature: 30°/40°. Use neutral soap without optical whiteners.
	Dry clean only. Do not wash in water. Treat with care when damp.
	Machine wash up to 40°.
	Dry cleaning with perchlorethylene, chlorinated solvents and mineral essences (perchlorethylene solvents, hydrocarbons, R113 and R11). The garment is washable with normal procedures but without the use of trichlorethylene (or trichlorethylene).
	Dry clean with tetrachloroethylene, monofluorotrichloromethane, trifluorochloroethane, hydrocarbons. Severely limit the amount of water added and/or the mechanical action and washing and drying temperatures. Do not dry clean at automatic coin-operated laundry facilities.
	Do not dry clean.
	Dry clean with hydrocarbons and trifluoro-trichloroethane.
	Do not tumble dry.
	Warm iron (max 110° C)
	Warm iron (max 150° C)
	Do not iron.
	Iron on the reverse side.
	Do not use chlorine bleach.
	Tumble dry.
	Wet-cleaning.

CO	cotton
LI	linen
PA	polyamide
PC	acrylic
PES	Polyethersulfone
PL	polyester
PP	polypropylene
PU	polyurethane
RA	rami
SE	silk
VI	viscose
WO	wool
WS	cashmere
WV	virgin wool



R728 col.0112

R729 col.0142

R730 col.0182



R731 col.0192

R732 col.0222

R733 col.0232



R734 col.0242

R735 col.0252

R736 col.0362



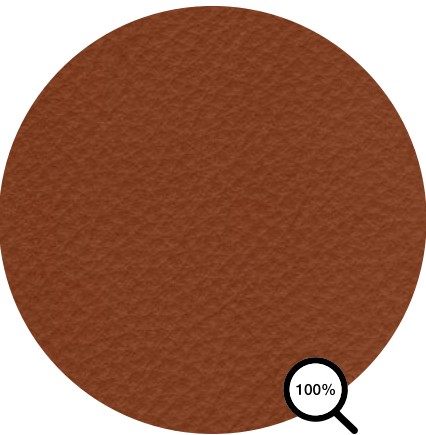
R737 col.0382

R738 col.0422

R739 col.0572



R740 col.0982



Top-grain leather, aniline dyed, natural grain, finished with light pigmented polymers, soft touch. Color proposals vary up to 17 color variations.

typology	Full grain
composition	Hides of european bovines
height	4.5/5 sqm
thickness	1.3/1.5 mm
light fastness	> 6
fire resistance	UNI EN 1021-1/2, CALIFORNIA TB 117-2013
other information	Chemicals used for tanning, dyeing and finishing the leather do not contain substances which are hazardous for human health and the environment.

washing information

For standard cleaning, dust with a soft dry cloth. Stains can be removed with a cloth and delicate cleaning products, such as neutral soap or cleansing milk. Dry immediately after cleaning, without rubbing the surface. Do not use solvents or stain removers.

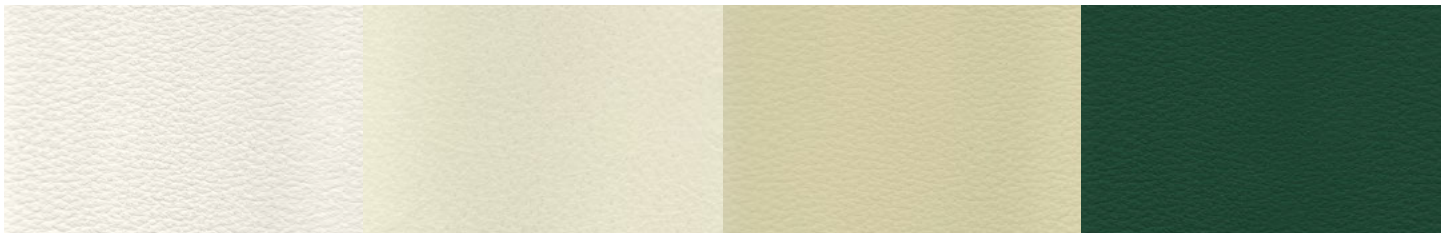
Legenda

	Hand wash. Delicate wash. Maximum temperature: 30°/40°. Use neutral soap without optical whiteners.	CO	cotton
	Dry clean only. Do not wash in water. Treat with care when damp.	LI	linen
	Machine wash up to 40°.	PA	polyamide
	Dry cleaning with perchlorethylene, chlorinated solvents and mineral essences (perchlorethylene solvents, hydrocarbons, R113 and R11). The garment is washable with normal procedures but without the use of trichlorethylene (or trichlorethylene).	PC	acrylic
	Dry clean with tetrachloroethylene, monofluorotrichloromethane, trifluorochloroethane, hydrocarbons. Severely limit the amount of water added and/or the mechanical action and washing and drying temperatures. Do not dry clean at automatic coin-operated laundry facilities.	PES	Polyethersulfone
	Do not dry clean.	PL	polyester
	Dry clean with hydrocarbons and trifluoro-trichloroethane.	PP	polypropylene
	Do not tumble dry.	PU	polyurethane
	Warm iron (max 110° C)	RA	rami
	Warm iron (max 150° C)	SE	silk
	Do not iron.	VI	viscose
	Iron on the reverse side.	WO	wool
	Do not use chlorine bleach.	WS	cashmere
	Tumble dry.	WV	virgin wool
	Wet-cleaning.		



# Leather

Variants

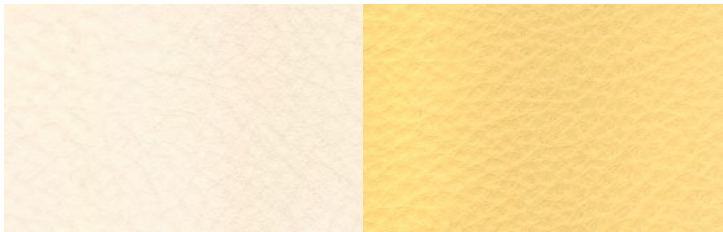


R804 col.white

R814 col.sand

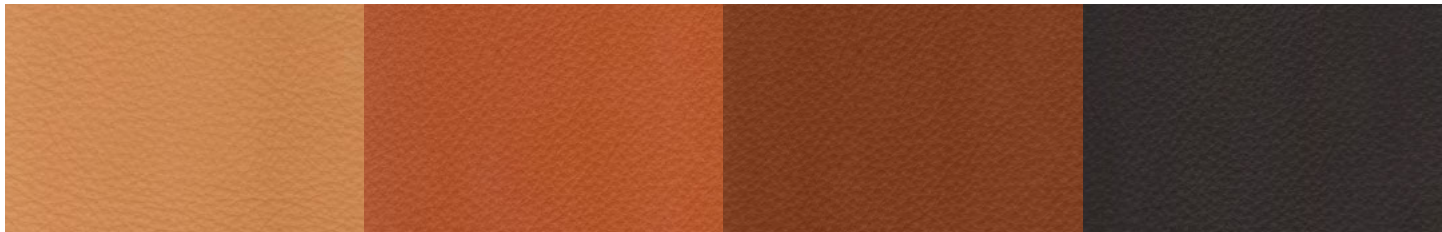
R803 col.beige

R817 col.green



R802 col.ivory

R808 col.yellow



R801 col. apricot

R813 col.rust

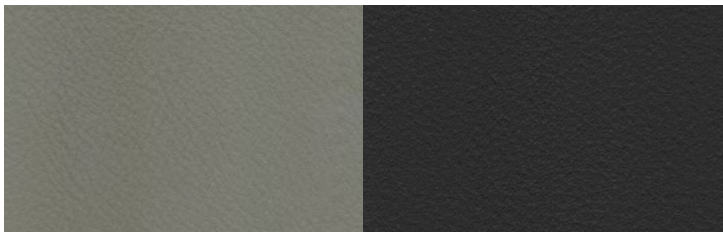
R815 col.tabacco

R816 col.Testa di Moro



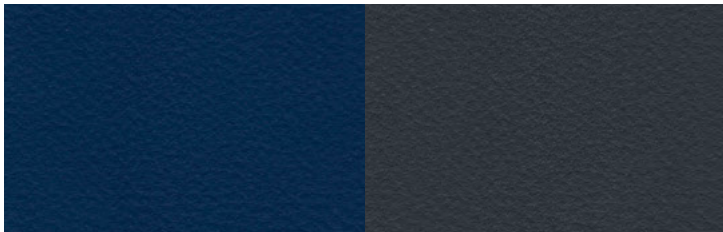
R812 col.red

R807 col.bordeaux



R809 col.grey

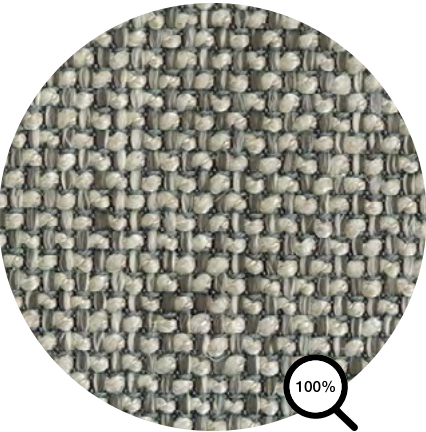
R810 col.black



R806 col.cornflower blue

R805 col.blue





typology	Fabric
category	B
composition	36%CO 26%LI 18%BAMBOO 17%PP 3%PA
height	cm 140
weight	800 gr/mtl
martindale	30.000
pilling	4
light fastness	4/5
shrinkage %	warp -4, weft -2
fire resistance	BS 5852 source 0, cigarette test, California TB 117-2013

washing information



Legenda

	Hand wash. Delicate wash. Maximum temperature: 30°/40°. Use neutral soap without optical whiteners.
	Dry clean only. Do not wash in water. Treat with care when damp.
	Machine wash up to 40°.
	Dry cleaning with perchlorethylene, chlorinated solvents and mineral essences (perchlorethylene solvents, hydrocarbons, R113 and R11). The garment is washable with normal procedures but without the use of trichlorethylene (or trichlorethylene).
	Dry clean with tetrachloroethylene, monofluorotrichloromethane, trifluorochloroethane, hydrocarbons. Severely limit the amount of water added and/or the mechanical action and washing and drying temperatures. Do not dry clean at automatic coin-operated laundry facilities.
	Do not dry clean.
	Dry clean with hydrocarbons and trifluoro-trichloroethane.
	Do not tumble dry.
	Warm iron (max 110° C)
	Warm iron (max 150° C)
	Do not iron.
	Iron on the reverse side.
	Do not use chlorine bleach.
	Tumble dry.
	Wet-cleaning.

CO	cotton
LI	linen
PA	polyamide
PC	acrylic
PES	Polyethersulfone
PL	polyester
PP	polypropylene
PU	polyurethane
RA	rami
SE	silk
VI	viscose
WO	wool
WS	cashmere
WV	virgin wool

# Maia

Variants

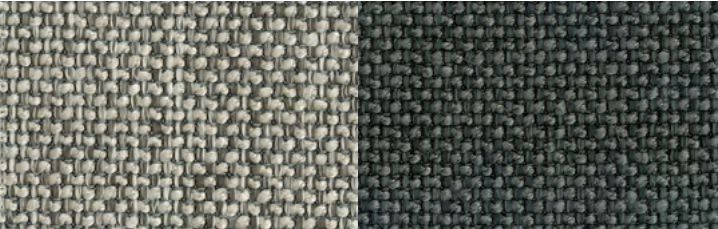
CAT.B



R217 col.01

R220 col.2/2

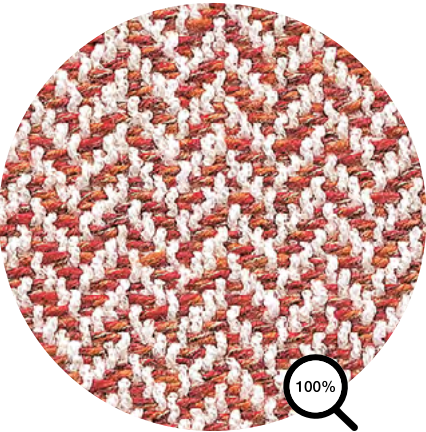
R218 col.08



R221 col.9/1

R219 col.10

CAT.D



typology	Fabric
category	D
composition	50%CO 17%LI 33%VI
height	cm 140
weight	950 gr/mtl
martindale	35.000
pilling	3/4
light fastness	4/5
fire resistance	BS 5852 source 0, cigarette test, California TB 117-2013

washing information



Legenda

	Hand wash. Delicate wash. Maximum temperature: 30°/40°. Use neutral soap without optical whiteners.
	Dry clean only. Do not wash in water. Treat with care when damp.
	Machine wash up to 40°.
	Dry cleaning with perchlorethylene, chlorinated solvents and mineral essences (perchlorethylene solvents, hydrocarbons, R113 and R11). The garment is washable with normal procedures but without the use of trichlorethylene (or trichlorethylene).
	Dry clean with tetrachloroethylene, monofluorotrichloromethane, trifluorochloroethane, hydrocarbons. Severely limit the amount of water added and/or the mechanical action and washing and drying temperatures. Do not dry clean at automatic coin-operated laundry facilities.
	Do not dry clean.
	Dry clean with hydrocarbons and trifluoro-trichloroethane.
	Do not tumble dry.
	Warm iron (max 110° C)
	Warm iron (max 150° C)
	Do not iron.
	Iron on the reverse side.
	Do not use chlorine bleach.
	Tumble dry.
	Wet-cleaning.

CO	cotton
LI	linen
PA	polyamide
PC	acrylic
PES	Polyethersulfone
PL	polyester
PP	polypropylene
PU	polyurethane
RA	rami
SE	silk
VI	viscose
WO	wool
WS	cashmere
WV	virgin wool

# Monaco

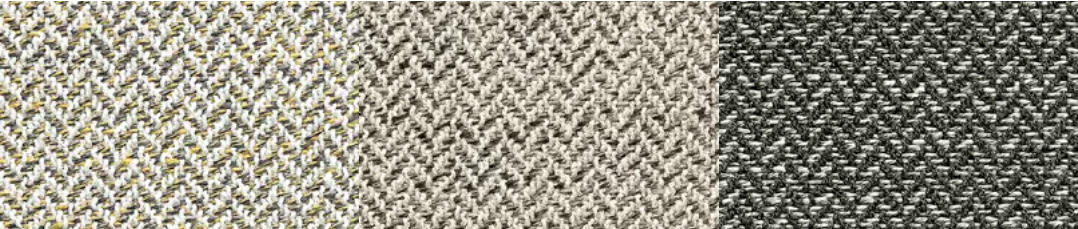
Variants

CAT.D



R313 col.443.000

R314 col.443.001



R318 col.443.014

R319 col.443.040

R320 col.443.60



R317 col.443.011

R316 col.443.010

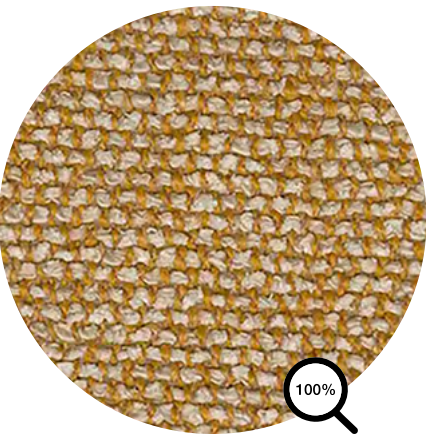
R315 col.443.007



# Moss

CAT.G

Information



typology	<b>Fabric</b>
category	<b>G</b>
composition	<b>52%CO 22%VI 14%PAN 6%LI 3%PL 3%NY</b>
height	<b>cm 138</b>
weight	<b>920 g/lin.m</b>
martindale	<b>50.000</b>
pilling	<b>4/5</b>
light fastness	<b>5/7</b>
fire resistance	<b>BS 5852 CRIB 5 WITH TREATMENT • BS 5852 PART 1 • EN 1021-1/2 US CAL. 117-2013 WITH CAL. 117 COMPLIANT INTERLINER • IMO FTP CODE 2010 PART 8</b>

washing information



## Legenda

	Hand wash. Delicate wash. Maximum temperature: 30°/40°. Use neutral soap without optical whiteners.	CO	cotton
	Dry clean only. Do not wash in water. Treat with care when damp.	LI	linen
	Machine wash up to 40°.	PA	polyamide
	Dry cleaning with perchlorethylene, chlorinated solvents and mineral essences (perchlorethylene solvents, hydrocarbons, R113 and R11). The garment is washable with normal procedures but without the use of trichlorethylene (or trichlorethylene).	PC	acrylic
	Dry clean with tetrachloroethylene, monofluorotrichloromethane, trifluorochloroethane, hydrocarbons. Severely limit the amount of water added and/or the mechanical action and washing and drying temperatures. Do not dry clean at automatic coin-operated laundry facilities.	PES	Polyethersulfone
	Do not dry clean.	PL	polyester
	Dry clean with hydrocarbons and trifluoro-trichloroethane.	PP	polypropylene
	Do not tumble dry.	PU	polyurethane
	Warm iron (max 110° C)	RA	rami
	Warm iron (max 150° C)	SE	silk
	Do not iron.	VI	viscose
	Iron on the reverse side.	WO	wool
	Do not use chlorine bleach.	WS	cashmere
	Tumble dry.	WV	virgin wool
	Wet-cleaning.		

# Moss

Variants

CAT.G



R648 col.04

R654 col.13

R653 col.12



R656 col.19

R657 col.21

R658 col.22



R652 col.11

R647 col.02

R646 col.01



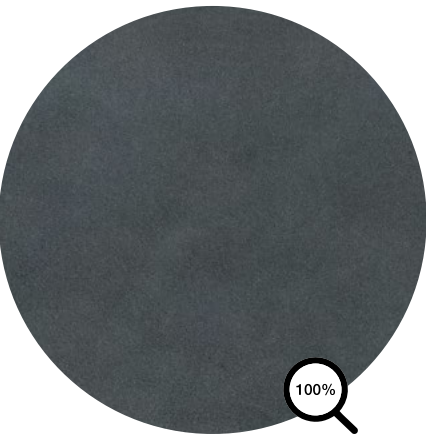
R649 col.06

R655 col.15

R650 col.08



R651 col.10



Leather is natural and its particular nature is underscored by wrinkles and scars that characterise the quality and origin. Leathers from the best breeders are carefully selected and only a small percentage are considered for purchase. The natural characteristics of leather do not allow us to guarantee the perfect correspondence between sample colours and the colours of available leathers.

typology	Leather
composition	European bovines
height	> 5 MQ
light fastness	3
thickness	1,1/1,3 mm
fire resistance	UNI EN 1021-1/2, BS 5852-0/1, IMO MED FTP8 A652
other information	Chemicals used for tanning, dying and finishing the leather do not contain substances which are hazardous for human health and the environment.
washing information	Nabuck and suede should be brushed periodically and cleaned with a vacuum cleaner. Spilt liquids should be soaked up immediately with a clean light-coloured cloth. A brush with soft bristles will help to restore the normal appearance of suede leather. Avoid exposure to direct sunlight. Avoid exposure to direct heat sources. Do not use aggressive cleaning products. Avoid contact between light and dark colours and also between different types of materials. Dust regularly with a soft, dry cloth.

Legenda

	Hand wash. Delicate wash. Maximum temperature: 30°/40°. Use neutral soap without optical whiteners.	CO	cotton
	Dry clean only. Do not wash in water. Treat with care when damp.	LI	linen
	Machine wash up to 40°.	PA	polyamide
	Dry cleaning with perchlorethylene, chlorinated solvents and mineral essences (perchlorethylene solvents, hydrocarbons, R113 and R11). The garment is washable with normal procedures but without the use of trichlorethylene (or trichlorethylene).	PC	acrylic
	Dry clean with tetrachloroethylene, monofluorotrichloromethane, trifluorochloroethane, hydrocarbons. Severely limit the amount of water added and/or the mechanical action and washing and drying temperatures. Do not dry clean at automatic coin-operated laundry facilities.	PES	Polyethersulfone
	Do not dry clean.	PL	polyester
	Dry clean with hydrocarbons and trifluoro-trichloroethane.	PP	polypropylene
	Do not tumble dry.	PU	polyurethane
	Warm iron (max 110° C)	RA	rami
	Warm iron (max 150° C)	SE	silk
	Do not iron.	VI	viscose
	Iron on the reverse side.	WO	wool
	Do not use chlorine bleach.	WS	cashmere
	Tumble dry.	WV	virgin wool
	Wet-cleaning.		

# Nabuk

## Variants



R823 col.3405

R825 col.3416



R824 col.3414

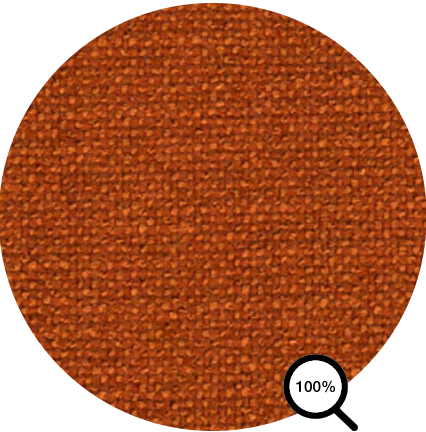
R822 col.3401



R826 col.3417

R827 col.3431





Noah is made out of 100% recycled polyester. It doesn't use any new raw materials and doesn't generate any waste. Subtly textured warp and weft yarns merge into a pleasantly soft weave with a minimalist quality. Noah's timeless design is simple to take care of and comes in a carefully selected colour palette of Mediterranean hues. Some details are important. Noah is made where we live and, like any other hometown, it's a place we want to keep flourishing. That's why we weave with recycled materials, certify our fabrics under OEKOTEX and work from a zero-waste, ISO 14001 accredited facility. Noah is PFC-free too.

typology	<b>Fabric</b>
category	<b>C</b>
composition	<b>100% PES REC</b>
height	<b>140+4 cm</b>
weight	<b>667 gr/ml ± 5%</b>
martindale	<b>&gt;100.000</b>
pilling	<b>4-5</b>
light fastness	<b>5-6</b>
fire resistance	<b>BS5852 SOURCE 0, EN1021-PART 1:2006, CAL TB 117:2013, NFPA 260:2013</b>



81% GRS recycled PET bottles  
19% GRS recycled PES waste



washing information



Legenda

	Hand wash. Delicate wash. Maximum temperature: 30°/40°. Use neutral soap without optical whiteners.
	Dry clean only. Do not wash in water. Treat with care when damp.
	Machine wash up to 40°.
	Dry cleaning with perchlorethylene, chlorinated solvents and mineral essences (perchlorethylene solvents, hydrocarbons, R113 and R11). The garment is washable with normal procedures but without the use of trichlorethylene (or trichlorethylene).
	Dry clean with tetrachloroethylene, monofluorotrichloromethane, trifluoroethane, hydrocarbons. Severely limit the amount of water added and/or the mechanical action and washing and drying temperatures. Do not dry clean at automatic coin-operated laundry facilities.
	Do not dry clean.
	Dry clean with hydrocarbons and trifluoro-trichloroethane.
	Do not tumble dry.
	Warm iron (max 110° C)
	Warm iron (max 150° C)
	Do not iron.
	Iron on the reverse side.
	Do not use chlorine bleach.
	Tumble dry.
	Wet-cleaning.

CO	cotton
LI	linen
PA	polyamide
PC	acrylic
PES	Polyethersulfone
PL	polyester
PP	polypropylene
PU	polyurethane
RA	rami
SE	silk
VI	viscose
WO	wool
WS	cashmere
WV	virgin wool

# Noah

Variants

CAT.C



R741 col.01

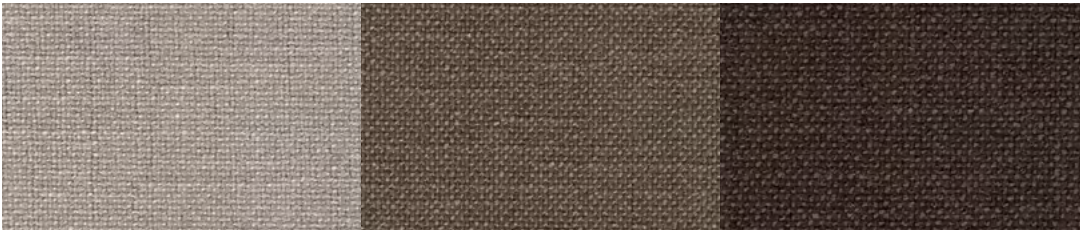
R742 col.05



R743 col.07

R744 col.08

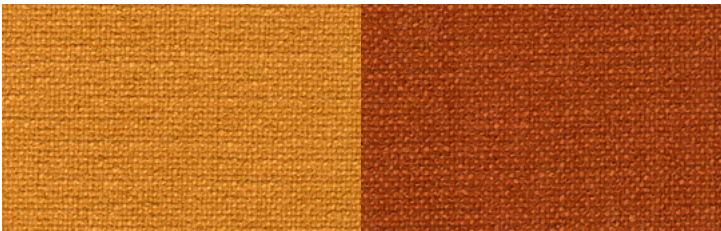
R745 col.18



R754 col.54

R752 col.52

R753 col.53



R746 col.20

R748 col.26



R750 col.38

R749 col.35



R755 col.71

R747 col.21

R751 col.47



The excellent quality of nuvola® leather comes from a careful selection of European cattle. nuvola® has a smooth and soft grain. The hides are dyed with a passing-through process, in the same dye as the finish. The colour card includes an extraordinary series of colours, obtained from a single quality of leather. The wide range of fashionable colours characterises nuvola® leather for its excellent range of use, tied to the most demanding design-proposals.

Inner side of the shell covered with micro-perforated leather.  
Outer side of the shell covered with leather.

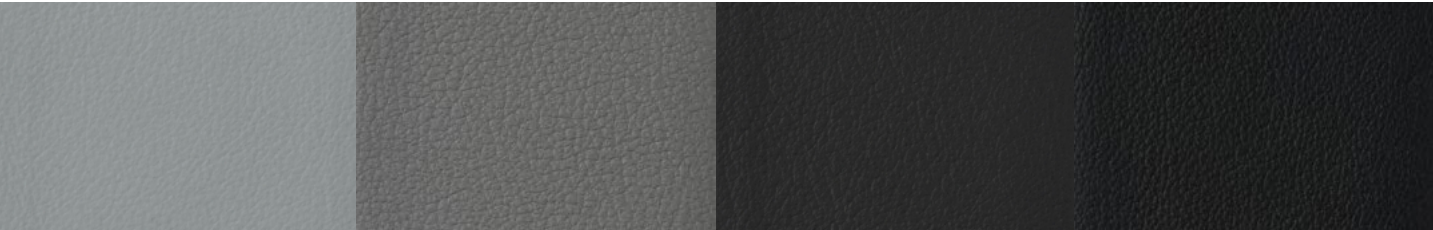
*The shell of the Flow collection covered with Nuvola leather is fully covered with leather, micro-perforated in the inner side. The seams are always in the same color.*

typology	Leather	washing information
composition	European bovine	
Tanning	Mineral	
Grain	Printed	
Dyeing	Penetrating	
Finishing	Polyurethane	
Covering	Pigmented	
Corrected	Grain	
Thickness	1,0 / 1,2 mm	
height	≥ 5 mq	
Dry friction	≥ 1.000 cycles	Avoid cleaning with aggressive products. Keep away from direct sunlight and from direct heat. Avoid contact between light and dark colours even between different materials. Regularly dust with soft and dry cloth.
Damp friction	≥ 250 cycles	
Finishing locking	≥ 3,0 n/cm2	
Flexing	≥ 50000 cycles	
Light fastness	≥ 4 blue scale	
Heat ageing	≥ 4 gray scale	
Fire resistance	ISO 1021:1-2, BS 5852 source 0-1, IMO FTP8 A652, California TB 117-2013	

Legenda

	Hand wash. Delicate wash. Maximum temperature: 30°/40°. Use neutral soap without optical whiteners.	CO	cotton
	Dry clean only. Do not wash in water. Treat with care when damp.	LI	linen
	Machine wash up to 40°.	PA	polyamide
	Dry cleaning with perchlorethylene, chlorinated solvents and mineral essences (perchlorethylene solvents, hydrocarbons, R113 and R11). The garment is washable with normal procedures but without the use of trichlorethylene (or trichlorethylene).	PC	acrylic
	Dry clean with tetrachloroethylene, monofluorotrichloromethane, trifluorochloroethane, hydrocarbons. Severely limit the amount of water added and/or the mechanical action and washing and drying temperatures. Do not dry clean at automatic coin-operated laundry facilities.	PES	Polyethersulfone
	Do not dry clean.	PL	polyester
	Dry clean with hydrocarbons and trifluoro-trichloroethane.	PP	polypropylene
	Do not tumble dry.	PU	polyurethane
	Warm iron (max 110° C)	RA	rami
	Warm iron (max 150° C)	SE	silk
	Do not iron.	VI	viscose
	Iron on the reverse side.	WO	wool
	Do not use chlorine bleach.	WS	cashmere
	Tumble dry.	WV	virgin wool
	Wet-cleaning.		





R718 col.269

R716 col.203

R711 col.141

R708 col.101

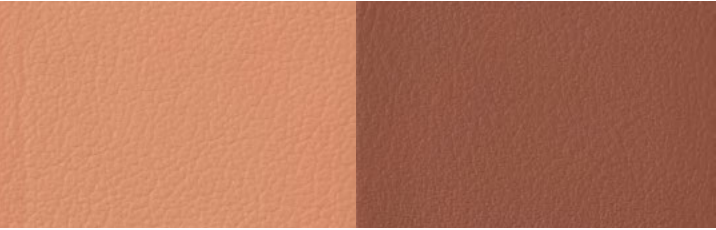


R709 col.117

R715col.199

R717 col.207

R713 col.147



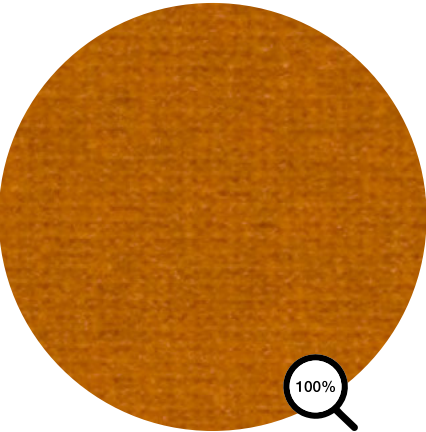
R714 col.151

R710 col.131



R712 col.143





typology	<b>Fabric</b>
category	<b>G</b>
composition	<b>100% CO</b>
height	<b>cm 140</b>
weight	<b>548 gr/mtl</b>
martindale	<b>80.000</b>
fire resistance	<b>BS 5852 cigarette test - EN7027-7-2,</b> <b>in conjunction with suitable combustion modified foam</b>

washing information

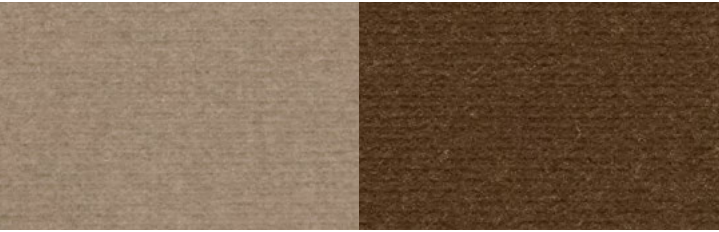


Legenda

	Hand wash. Delicate wash. Maximum temperature: 30°/40°. Use neutral soap without optical whiteners.
	Dry clean only. Do not wash in water. Treat with care when damp.
	Machine wash up to 40°.
	Dry cleaning with perchlorethylene, chlorinated solvents and mineral essences (perchlorethylene solvents, hydrocarbons, R113 and R11). The garment is washable with normal procedures but without the use of trichlorethylene (or trichlorethylene).
	Dry clean with tetrachloroethylene, monofluorotrichloromethane, trifluorochloroethane, hydrocarbons. Severely limit the amount of water added and/or the mechanical action and washing and drying temperatures. Do not dry clean at automatic coin-operated laundry facilities.
	Do not dry clean.
	Dry clean with hydrocarbons and trifluoro-trichloroethane.
	Do not tumble dry.
	Warm iron (max 110° C)
	Warm iron (max 150° C)
	Do not iron.
	Iron on the reverse side.
	Do not use chlorine bleach.
	Tumble dry.
	Wet-cleaning.

CO	cotton
LI	linen
PA	polyamide
PC	acrylic
PES	Polyethersulfone
PL	polyester
PP	polypropylene
PU	polyurethane
RA	rami
SE	silk
VI	viscose
WO	wool
WS	cashmere
WV	virgin wool

CAT.G



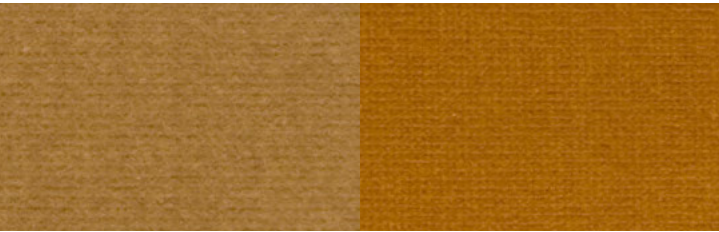
R556 lino

R664 col.06



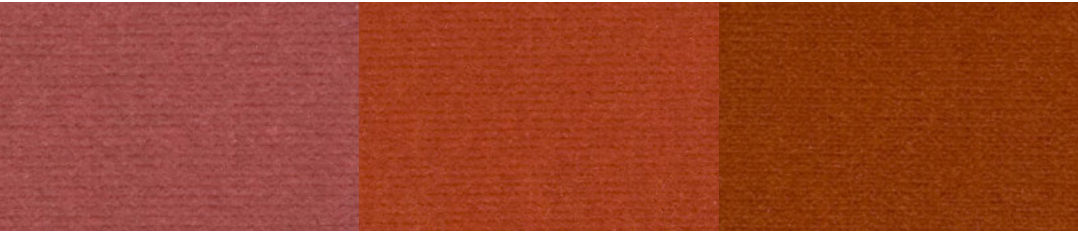
R663 beige col.02

R613 col.04



R612 senape col.05

R563 giallo ocre



R560 rosa antico

R561 terracotta

R562 rame

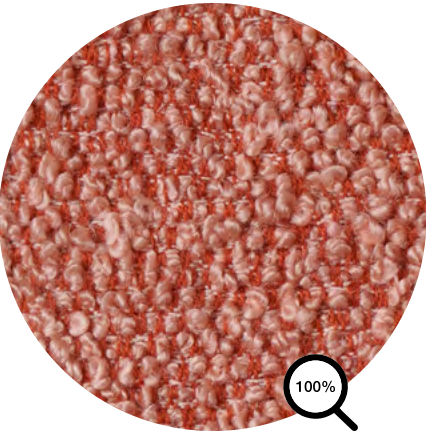


R558 verde-kaki

R559 verde assenzio

R557 marine

CAT.E



typology	Fabric	washing information
category	E	
composition	13%CO 30%WO 25%PC 30%PL 2%PA	
height	cm 137	
weight	760 gr/mtl	
martindale	35.000	
pilling	4	
light fastness - light colours	4/5	
light fastness - dark/medium colours	5	
fire resistance	BS 5852 source 0, cigarette test, california TB 117-2013 match test	

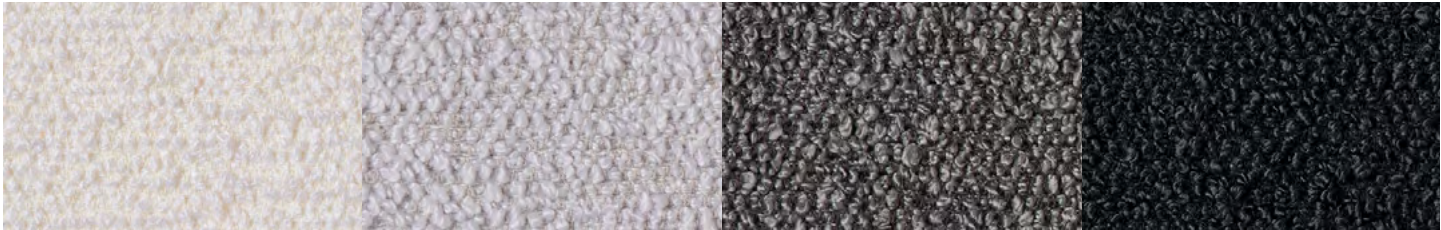
Legenda

	Hand wash. Delicate wash. Maximum temperature: 30°/40°. Use neutral soap without optical whiteners.	CO cotton
	Dry clean only. Do not wash in water. Treat with care when damp.	LI linen
	Machine wash up to 40°.	PA polyamide
	Dry cleaning with perchlorethylene, chlorinated solvents and mineral essences (perchlorethylene solvents, hydrocarbons, R113 and R11). The garment is washable with normal procedures but without the use of trichlorethylene (or trichlorethylene).	PC acrylic
	Dry clean with tetrachloroethylene, monofluorotrichloromethane, trifluorochloroethane, hydrocarbons. Severely limit the amount of water added and/or the mechanical action and washing and drying temperatures. Do not dry clean at automatic coin-operated laundry facilities.	PES Polyethersulfone
	Do not dry clean.	PL polyester
	Dry clean with hydrocarbons and trifluoro-trichloroethane.	PP polypropylene
	Do not tumble dry.	PU polyurethane
	Warm iron (max 110° C)	RA rami
	Warm iron (max 150° C)	SE silk
	Do not iron.	VI viscose
	Iron on the reverse side.	WO wool
	Do not use chlorine bleach.	WS cashmere
	Tumble dry.	WV virgin wool
	Wet-cleaning.	

# Paradise

Variants

CAT.E

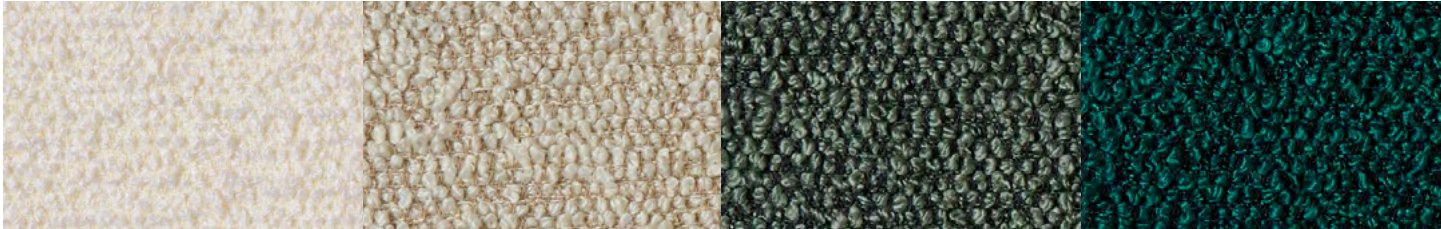


R542 col.060

R541 col.042

R546 col.140

R545 col.124

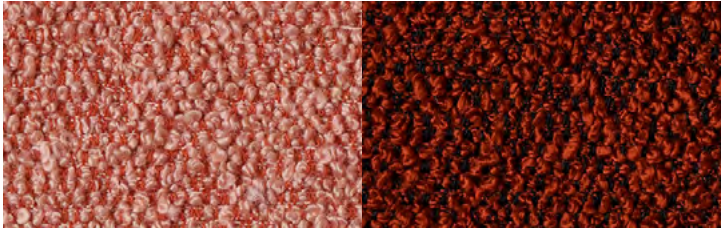


R689 col.061

R549 col.320

R547 col.141

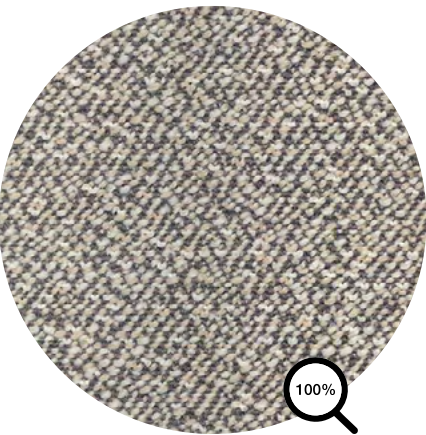
R544 col.121



R548 col.220

R543 col.120





Nature at its best. The grainy feel and organic look of the crepe fabric are the perfect “translation” of the tactile values of nature. In two or three colours, Parigi shows both subtle and intense hues, with a high volume structure, while the special woven binding lends it an air of sophistication.

typology	Fabric
category	F
composition	94%WV 6%PA
height	cm 140
weight	910 gr/mtl
martindale	122.000 DIN EN ISO 12947-2
pilling	4/5
light fastness	5/8
fire resistance	BS 5852:2006 source 0 cigarette, source 1 match, california TB 117-2013

washing information



Legenda

	Hand wash. Delicate wash. Maximum temperature: 30°/40°. Use neutral soap without optical whiteners.
	Dry clean only. Do not wash in water. Treat with care when damp.
	Machine wash up to 40°.
	Dry cleaning with perchlorethylene, chlorinated solvents and mineral essences (perchlorethylene solvents, hydrocarbons, R113 and R11). The garment is washable with normal procedures but without the use of trichlorethylene (or trichlorethylene).
	Dry clean with tetrachloroethylene, monofluorotrichloromethane, trifluorochloroethane, hydrocarbons. Severely limit the amount of water added and/or the mechanical action and washing and drying temperatures. Do not dry clean at automatic coin-operated laundry facilities.
	Do not dry clean.
	Dry clean with hydrocarbons and trifluoro-trichloroethane.
	Do not tumble dry.
	Warm iron (max 110° C)
	Warm iron (max 150° C)
	Do not iron.
	Iron on the reverse side.
	Do not use chlorine bleach.
	Tumble dry.
	Wet-cleaning.

CO	cotton
LI	linen
PA	polyamide
PC	acrylic
PES	Polyethersulfone
PL	polyester
PP	polypropylene
PU	polyurethane
RA	rami
SE	silk
VI	viscose
WO	wool
WS	cashmere
WV	virgin wool

# Parigi

Variants

CAT.F

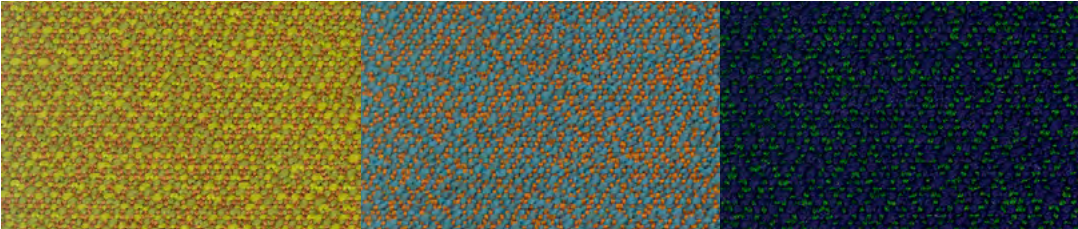


R429 col.001

R430 col.002

R432 col.004

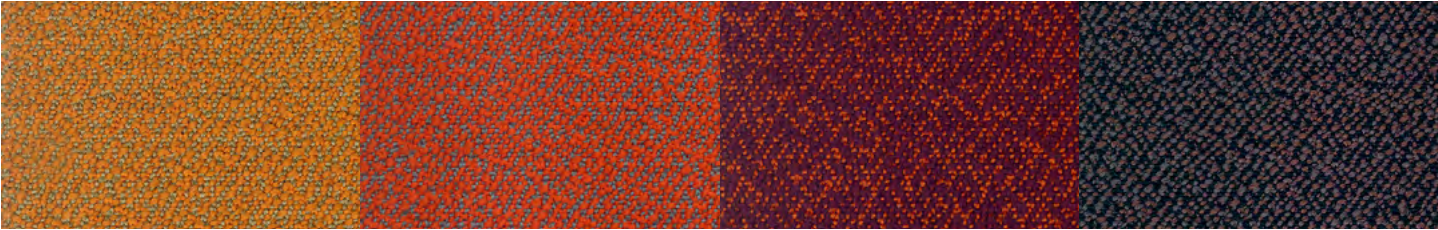
R433 col.005



R437 col.009

R434 col.006

R436 col.008



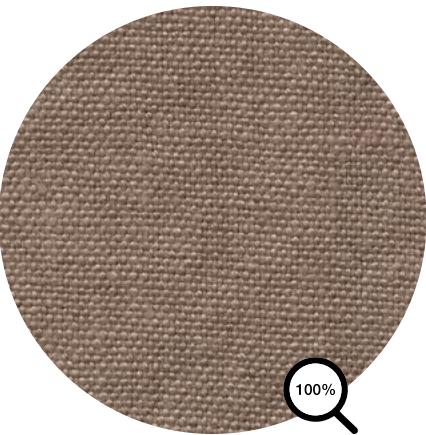
R435 col.007

R439 col.011

R438 col.010

R431 col.003

CAT.E



Portofino is linen used mainly for upholstery and upholstery, offered in 16 different variants. Thanks to the pumice stone treatment the surface of the fabric presents light veiled effect. Ideal for vintage upholstery. Furthermore, the stain-resistant treatment makes the Portofino ideal for the creation of finished products that must last over time while maintaining their characteristics unchanged.

typology	<b>Fabric</b>
category	<b>E</b>
composition	<b>100%LI</b>
height	<b>cm 140</b>
weight	<b>630 gr/mtl</b>
martindale	<b>&gt; 33.500</b>
pilling	<b>4</b>
light fastness	<b>4/5</b>
dimensional stability	<b>3%</b>
fire resistance	<b>BS 5852 source 0, cigarette test</b>

washing information



Legenda

	Hand wash. Delicate wash. Maximum temperature: 30°/40°. Use neutral soap without optical whiteners.
	Dry clean only. Do not wash in water. Treat with care when damp.
	Machine wash up to 40°.
	Dry cleaning with perchlorethylene, chlorinated solvents and mineral essences (perchlorethylene solvents, hydrocarbons, R113 and R11). The garment is washable with normal procedures but without the use of trichlorethylene (or trichlorethylene).
	Dry clean with tetrachloroethylene, monofluorotrichloromethane, trifluorochloroethane, hydrocarbons. Severely limit the amount of water added and/or the mechanical action and washing and drying temperatures. Do not dry clean at automatic coin-operated laundry facilities.
	Do not dry clean.
	Dry clean with hydrocarbons and trifluoro-trichloroethane.
	Do not tumble dry.
	Warm iron (max 110° C)
	Warm iron (max 150° C)
	Do not iron.
	Iron on the reverse side.
	Do not use chlorine bleach.
	Tumble dry.
	Wet-cleaning.

CO	cotton
LI	linen
PA	polyamide
PC	acrylic
PES	Polyethersulfone
PL	polyester
PP	polypropylene
PU	polyurethane
RA	rami
SE	silk
VI	viscose
WO	wool
WS	cashmere
WV	virgin wool



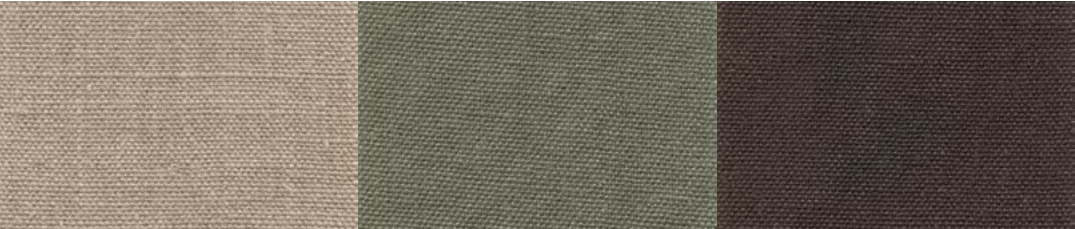
# Portofino

Variants

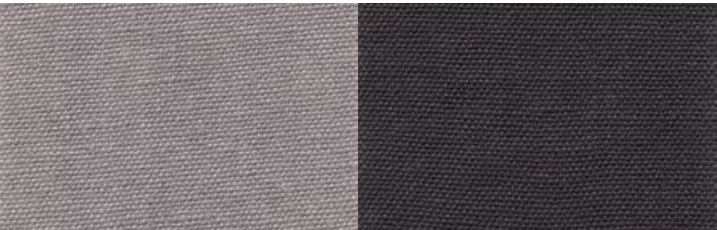
CAT.E



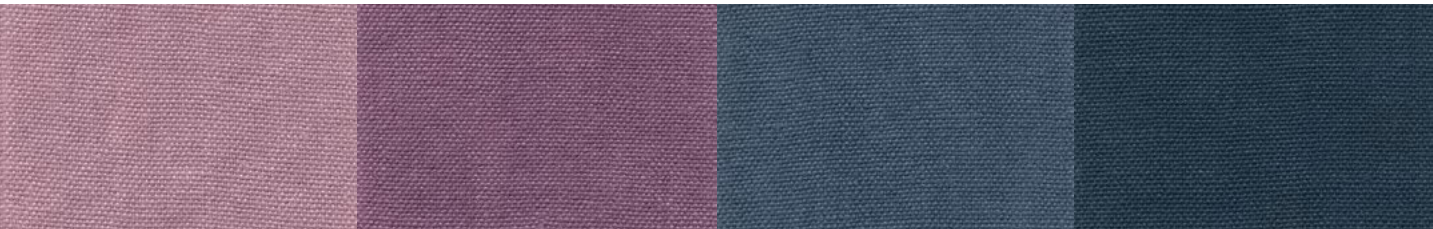
R866 col.016                      R868 col.100                      R871 col.108                      R857 col.001



R867 col.019                      R870 col.106                      R858 col.002



R864 col.012                      R865 col.014



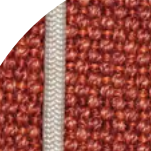
R860 col.007                      R861 col.008                      R862 col.010                      R863 col.011



R869 col.103                      R859 col.006                      R872 col.109



## CAT.E



A circular inset showing a close-up of the fabric texture, highlighting the red and white stripes and the woven pattern.

Its composition guarantees permeability and breathability and make Ramiro fabric suitable for a prolonged use in outdoor environments without compromising its appearance, hand and color.

typology	Outdoor fabric
category	E
composition	100% POLYPROPYLENE - TEN STARS YARN, exclusive patented yarn
height	cm 138
weight	880 gr/mtl
martindale	50.000
pilling	5
light fastness	7
shrinkage %	-3
resistance to machine washing	5
resistance to hand washing	5
resistance to sea water	5
chlorinated/swimming pool water	4/5
fire resistance	California TB 117-2013



Ⓟ

Ⓟ



~~Ⓜ~~

Ⓕ



2

☆



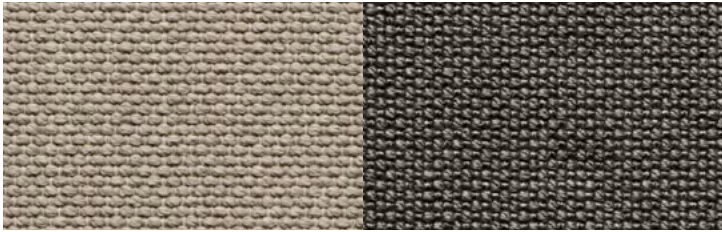
W

WV virgin wool

# Ramiro

Variants

CAT.E



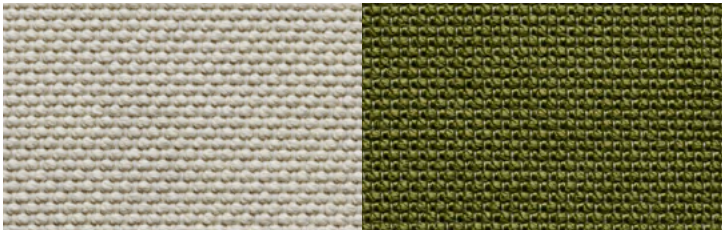
R550 col.ecrù

R551 col.titanium



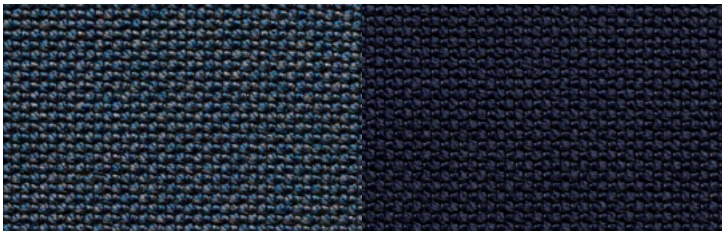
R552 col.pewter grey

R553 col.dark orange



R659 col.cream

R660 col.olive green



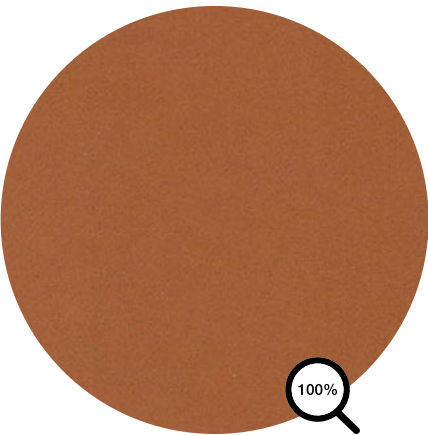
R661 col.denim blue

R662 col.navy blue



matt ecrù grey - Arpa cord wave 100% polyester

matt anthracite grey - Arpa cord wave 100% polyester



typology	Vegetable tanned bovine saddle-hide
thickness	2.4/2.6 mm
height	750 gr/mtl
weight	~2.000 gr/sqm
fire resistance	1IM, UNI 8456 (1987), UNI 9174 (1987), UNI 9174/A1 (1996), UNI 9177 (1987)
washing information	The upholstery is in totally natural, prime quality full grain saddle-hide. It is very sensitive: be careful of liquids or other substances that could alter the colour of the leather, and also of metallic or sharp parts that could leave marks on the surface.
cleaning and maintenance	Only use specific leather cleaners. / Avoid direct exposure to sunlight and sources of heat. / Avoid contact between light and dark colours, and between different materials. / Dust with a soft dry cloth.

Legenda

	Hand wash. Delicate wash. Maximum temperature: 30°/40°. Use neutral soap without optical whiteners.	CO	cotton
	Dry clean only. Do not wash in water. Treat with care when damp.	LI	linen
	Machine wash up to 40°.	PA	polyamide
	Dry cleaning with perchlorethylene, chlorinated solvents and mineral essences (perchlorethylene solvents, hydrocarbons, R113 and R11). The garment is washable with normal procedures but without the use of trichlorethylene (or trichlorethylene).	PC	acrylic
	Dry clean with tetrachloroethylene, monofluorotrichloromethane, trifluorochloroethane, hydrocarbons. Severely limit the amount of water added and/or the mechanical action and washing and drying temperatures. Do not dry clean at automatic coin-operated laundry facilities.	PES	Polyethersulfone
	Do not dry clean.	PL	polyester
	Dry clean with hydrocarbons and trifluoro-trichloroethane.	PP	polypropylene
	Do not tumble dry.	PU	polyurethane
	Warm iron (max 110° C)	RA	rami
	Warm iron (max 150° C)	SE	silk
	Do not iron.	VI	viscose
	Iron on the reverse side.	WO	wool
	Do not use chlorine bleach.	WS	cashmere
	Tumble dry.	WV	virgin wool
	Wet-cleaning.		

# Saddle-hide

Variants



R906 col.29

R904 col.26



R903 col.03

R900 col.02





typology	Fabric
category	F
composition	34%PL 31%WV 26%PC 4%CO 3%NY 2%LI
height	cm 140
weight	680 gr/mtl
martindale	45.000
pilling	3
light fastness	6/7
fire resistance	EN 1021-1/2, US CAL. BULL. 117-2013, NF D 60 013 with treatment, SN 198 898 5.3 with treatment, upon request BS 5852 crib 5 with treatment e BS 5852 part 1 with treatment

washing information



Legenda

	Hand wash. Delicate wash. Maximum temperature: 30°/40°. Use neutral soap without optical whiteners.	CO	cotton
	Dry clean only. Do not wash in water. Treat with care when damp.	LI	linen
	Machine wash up to 40°.	PA	polyamide
	Dry cleaning with perchlorethylene, chlorinated solvents and mineral essences (perchlorethylene solvents, hydrocarbons, R113 and R11). The garment is washable with normal procedures but without the use of trichlorethylene (or trichlorethylene).	PC	acrylic
	Dry clean with tetrachloroethylene, monofluorotrichloromethane, trifluorochloroethane, hydrocarbons. Severely limit the amount of water added and/or the mechanical action and washing and drying temperatures. Do not dry clean at automatic coin-operated laundry facilities.	PES	Polyethersulfone
	Do not dry clean.	PL	polyester
	Dry clean with hydrocarbons and trifluoro-trichloroethane.	PP	polypropylene
	Do not tumble dry.	PU	polyurethane
	Warm iron (max 110° C)	RA	rami
	Warm iron (max 150° C)	SE	silk
	Do not iron.	VI	viscose
	Iron on the reverse side.	WO	wool
	Do not use chlorine bleach.	WS	cashmere
	Tumble dry.	WV	virgin wool
	Wet-cleaning.		

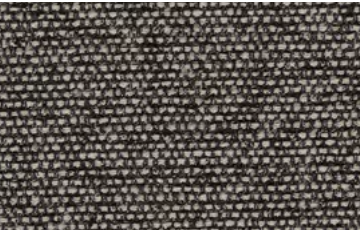
# Savanna

CAT.F

Variants



R589 col.122



R590 col.152



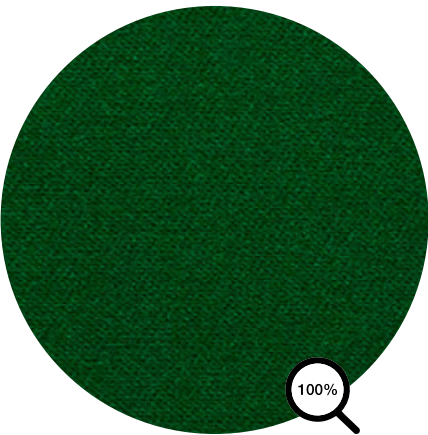
R592 col.442



R593 col.622



R591 col.262



typology	<b>Fabric</b>
category	<b>G</b>
composition	<b>100%PL</b>
height	<b>cm 140</b>
weight	<b>553 gr/mtl</b>
martindale	<b>&gt;100.000</b>
light fastness - light colours	<b>5/6</b>
light fastness - dark colours	<b>&gt;6</b>
fire resistance	<b>BS 5852 part 1 source 0, source 1, fire reaction class 1, TECH.B.117:2013, 1IM</b>

washing information



Legenda

	Hand wash. Delicate wash. Maximum temperature: 30°/40°. Use neutral soap without optical whiteners.	CO	cotton
	Dry clean only. Do not wash in water. Treat with care when damp.	LI	linen
	Machine wash up to 40°.	PA	polyamide
	Dry cleaning with perchlorethylene, chlorinated solvents and mineral essences (perchlorethylene solvents, hydrocarbons, R113 and R11). The garment is washable with normal procedures but without the use of trichlorethylene (or trichlorethylene).	PC	acrylic
	Dry clean with tetrachloroethylene, monofluorotrichloromethane, trifluorochloroethane, hydrocarbons. Severely limit the amount of water added and/or the mechanical action and washing and drying temperatures. Do not dry clean at automatic coin-operated laundry facilities.	PES	Polyethersulfone
	Do not dry clean.	PL	polyester
	Dry clean with hydrocarbons and trifluoro-trichloroethane.	PP	polypropylene
	Do not tumble dry.	PU	polyurethane
	Warm iron (max 110° C)	RA	rami
	Warm iron (max 150° C)	SE	silk
	Do not iron.	VI	viscose
	Iron on the reverse side.	WO	wool
	Do not use chlorine bleach.	WS	cashmere
	Tumble dry.	WV	virgin wool
	Wet-cleaning.		

# Sunday

Variants

CAT.G



R569 col.015

R568 col.014

R571 col.006

R570 col.011



R610 col.032

R573 col.009

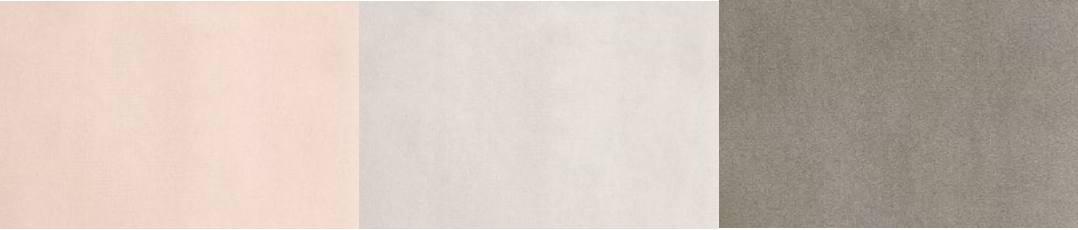
R572 col.008



R575 col.027

R606 col.004

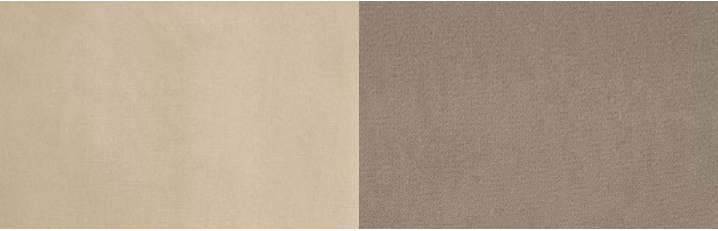
R605 col.002



R607 col.022

R608 col.023

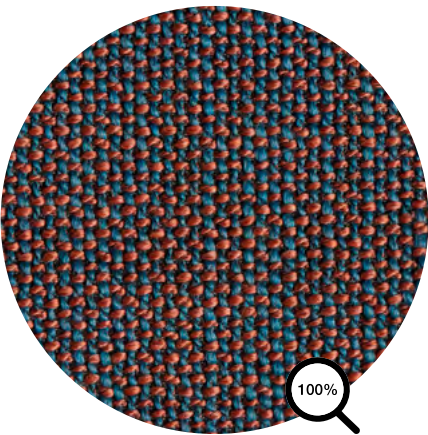
R609 col.030



R611 col.034

R574 col.038





typology	<b>Fabric</b>
category	<b>C</b>
composition	<b>68%PC 16%PL 16%CO</b>
width	<b>cm 138/140</b>
weight	<b>693 gr/mtl</b>
martindale	<b>35.000</b>
pilling	<b>4</b>
light fastness	<b>5</b>
fire rsistence	<b>TB117-2013, cigarette EN1021-1, cigarette BS5852-1979</b>

washing information



Legenda

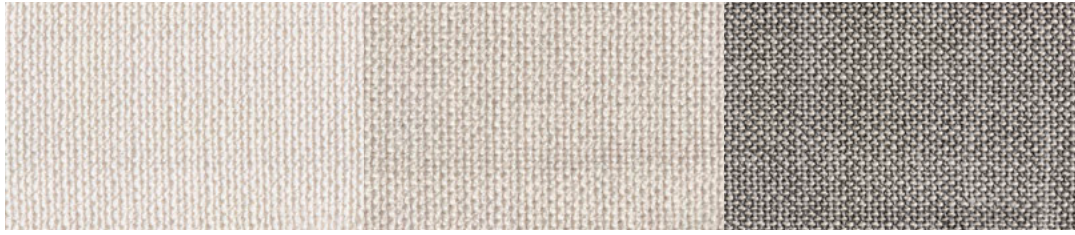
	Hand wash. Delicate wash. Maximum temperature: 30°/40°. Use neutral soap without optical whiteners.
	Dry clean only. Do not wash in water. Treat with care when damp.
	Machine wash up to 40°.
	Dry cleaning with perchlorethylene, chlorinated solvents and mineral essences (perchlorethylene solvents, hydrocarbons, R113 and R11). The garment is washable with normal procedures but without the use of trichlorethylene (or trichlorethylene).
	Dry clean with tetrachloroethylene, monofluorotrichloromethane, trifluorochloroethane, hydrocarbons. Severely limit the amount of water added and/or the mechanical action and washing and drying temperatures. Do not dry clean at automatic coin-operated laundry facilities.
	Do not dry clean.
	Dry clean with hydrocarbons and trifluoro-trichloroethane.
	Do not tumble dry.
	Warm iron (max 110° C)
	Warm iron (max 150° C)
	Do not iron.
	Iron on the reverse side.
	Do not use chlorine bleach.
	Tumble dry.
	Wet-cleaning.

CO	cotton
LI	linen
PA	polyamide
PC	acrylic
PES	Polyethersulfone
PL	polyester
PP	polypropylene
PU	polyurethane
RA	rami
SE	silk
VI	viscose
WO	wool
WS	cashmere
WV	virgin wool

# Taiga

CAT.C

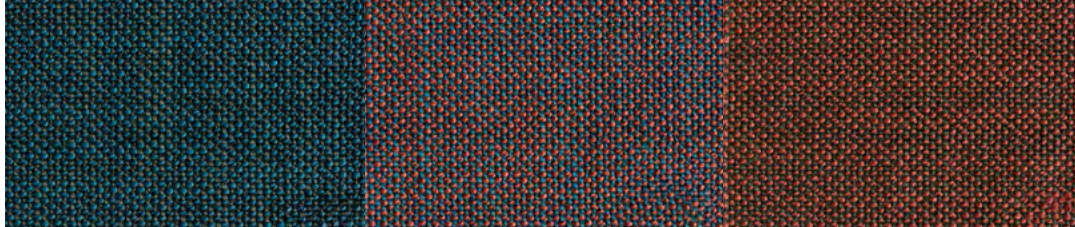
Variants



R599 col.01/1

R600 col.02/1

R604 col.90/1



R601 col.19/1

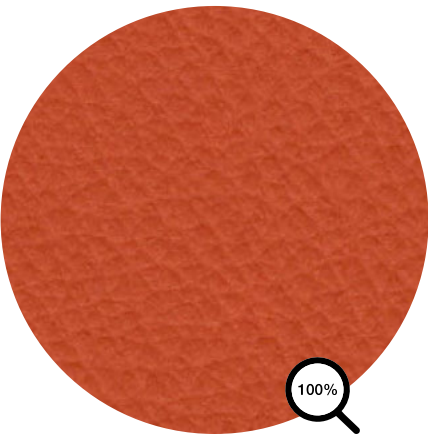
R603 col.71/1

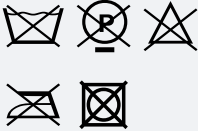
R602 col.19/2

# Time TL15
















CAT.B

Information



typology	Fabric
category	B
composition	71%PVC 6%PU 14%CO 9%PES
width	cm 140
weight	660 gr/m²
martindale	100.000
thickness	1
light fastness	6/7
fire rsistence	11M; IMO-FTP; california TB 117; BS7176/EN1021, upon request: CRIB 5 treatment.
washing information	<div>Ordinary dirt stains such as coffee, soft drinks, milk, beer, etc. can be removed by using a clean cloth or soft sponge and dabbing the stain with soapy water. Remove the soap solution by wiping the area with a cloth and clean water. Do not use chlorine, alcohol, or solvents. Warning: non-colourfast fabrics (such as jeans or similar items) can leave stubborn stains or spots on light coloured eco leather.</div> <div></div>

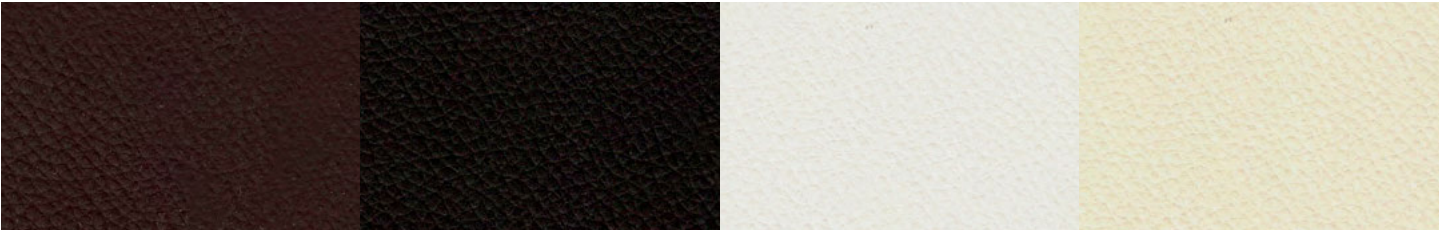
## Legenda

	Hand wash. Delicate wash. Maximum temperature: 30°/40°. Use neutral soap without optical whiteners.	CO cotton
	Dry clean only. Do not wash in water. Treat with care when damp.	LI linen
	Machine wash up to 40°.	PA polyamide
	Dry cleaning with perchlorethylene, chlorinated solvents and mineral essences (perchlorethylene solvents, hydrocarbons, R113 and R11). The garment is washable with normal procedures but without the use of trichlorethylene (or trichlorethylene).	PC acrylic
	Dry clean with tetrachloroethylene, monofluorotrichloromethane, trifluorochloroethane, hydrocarbons. Severely limit the amount of water added and/or the mechanical action and washing and drying temperatures. Do not dry clean at automatic coin-operated laundry facilities.	PES Polyethersulfone
	Do not dry clean.	PL polyester
	Dry clean with hydrocarbons and trifluoro-trichloroethane.	PP polypropylene
	Do not tumble dry.	PU polyurethane
	Warm iron (max 110° C)	RA rami
	Warm iron (max 150° C)	SE silk
	Do not iron.	VI viscose
	Iron on the reverse side.	WO wool
	Do not use chlorine bleach.	WS cashmere
	Tumble dry.	WV virgin wool
	Wet-cleaning.	

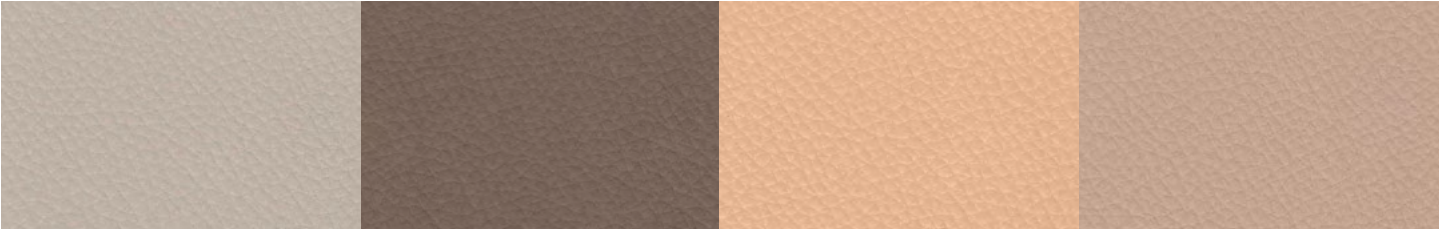
# Time TL15

Variants

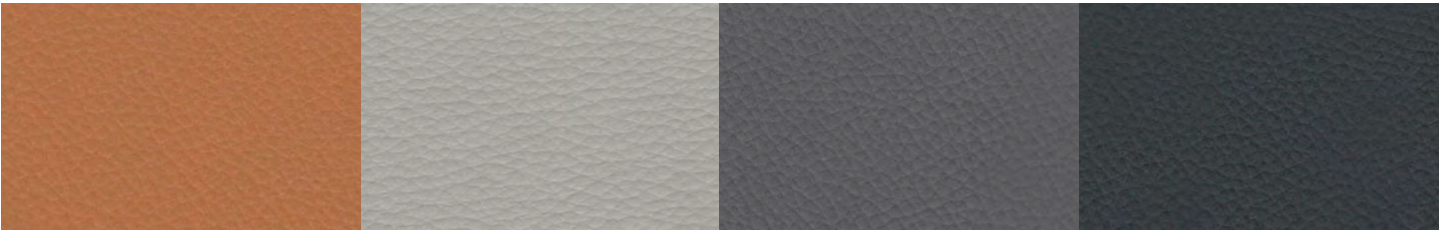
CAT.B



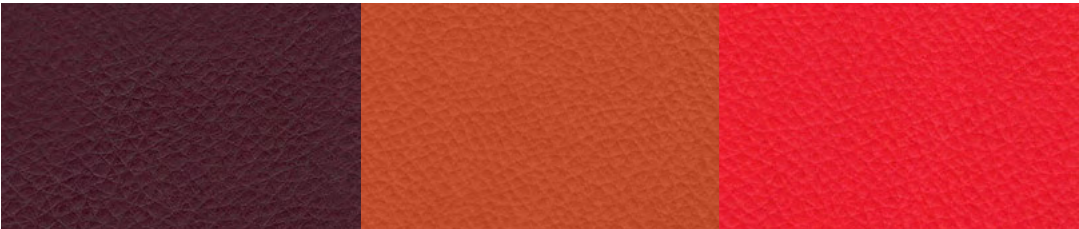
R885 col.17500      R886 col.16      R887 col.01      R879 col.6747



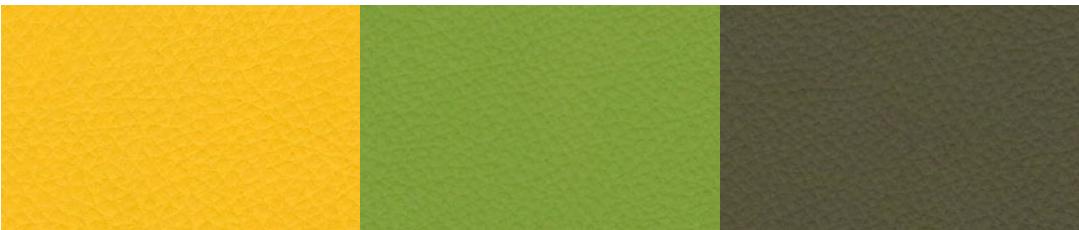
R880 col.6776      R881 col.5800      R882 col.5992      R883 col.10645



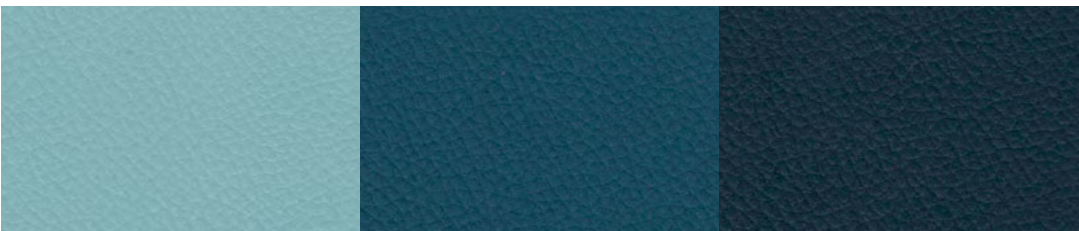
R884 col.11022      R888 col.6777      R889 col.6791      R890 col.6792



R891 col.13800      R892 col.12410      R893 col.7390



R894 col.11990      R895 col.16086      R896 col.16280



R897 col.15008      R898 col.15120      R899 col.15660



# Time TL15

Other colors available. +5% from the list price

CAT.B



col.1-0003

col.10023

col.10120

col.10180

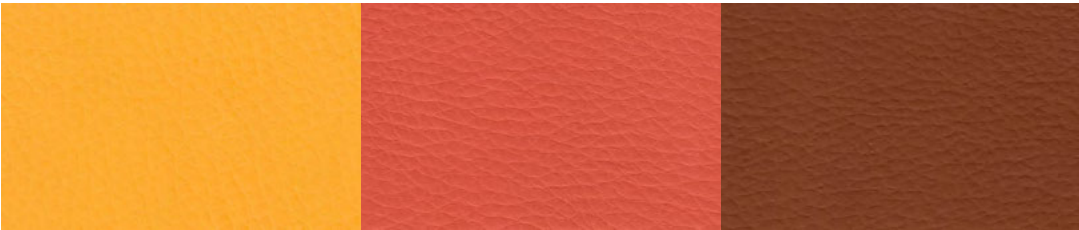


col.5991

col.10125

col.10232

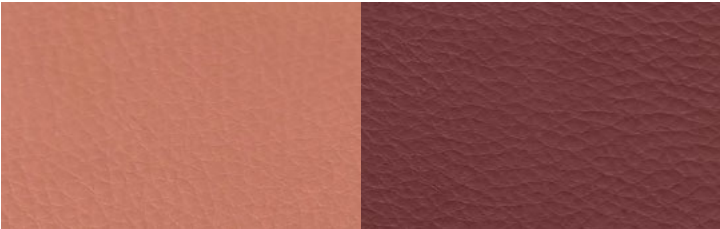
col.6783



col.12070

col.12300

col.5796



col.12750

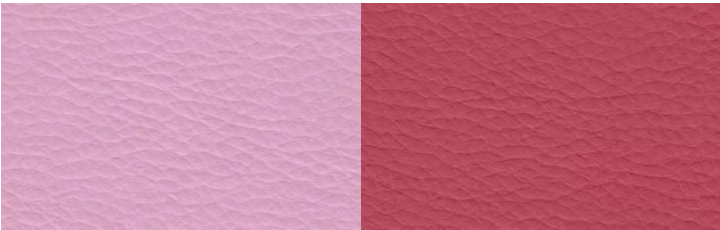
col.5804



col.13610

col.13650

col.15301



col.13400

col.13010

# Time TL15

Other colors available. +5% from the list price

CAT.B



col.15103

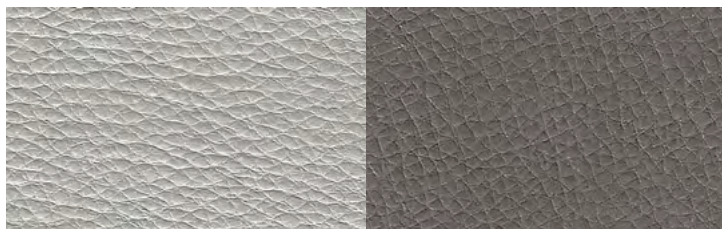
col.16030

col.15137



col.17500

col.5799

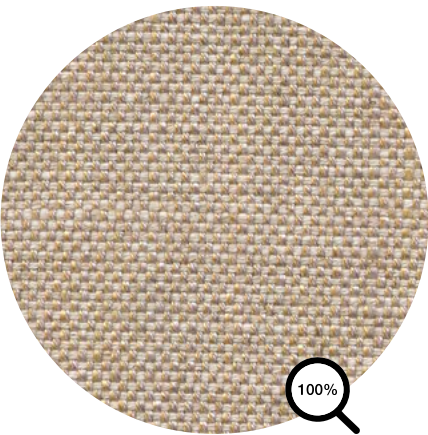


col.10810

col.6259



col.10800



typology	<b>Fabric</b>
category	<b>B</b>
composition	<b>67%VI 33%LI</b>
height	<b>cm 138/140</b>
weight	<b>810 gr/mtl</b>
martindale	<b>&gt; 20.000</b>
pilling	<b>4</b>
light fastness	<b>4/5</b>
fire resistance	<b>BS 5852 source 0, cigarette test</b>

washing information



Legenda

	Hand wash. Delicate wash. Maximum temperature: 30°/40°. Use neutral soap without optical whiteners.
	Dry clean only. Do not wash in water. Treat with care when damp.
	Machine wash up to 40°.
	Dry cleaning with perchlorethylene, chlorinated solvents and mineral essences (perchlorethylene solvents, hydrocarbons, R113 and R11). The garment is washable with normal procedures but without the use of trichlorethylene (or trichlorethylene).
	Dry clean with tetrachloroethylene, monofluorotrichloromethane, trifluorochloroethane, hydrocarbons. Severely limit the amount of water added and/or the mechanical action and washing and drying temperatures. Do not dry clean at automatic coin-operated laundry facilities.
	Do not dry clean.
	Dry clean with hydrocarbons and trifluoro-trichloroethane.
	Do not tumble dry.
	Warm iron (max 110° C)
	Warm iron (max 150° C)
	Do not iron.
	Iron on the reverse side.
	Do not use chlorine bleach.
	Tumble dry.
	Wet-cleaning.

CO	cotton
LI	linen
PA	polyamide
PC	acrylic
PES	Polyethersulfone
PL	polyester
PP	polypropylene
PU	polyurethane
RA	rami
SE	silk
VI	viscose
WO	wool
WS	cashmere
WV	virgin wool

CAT.B



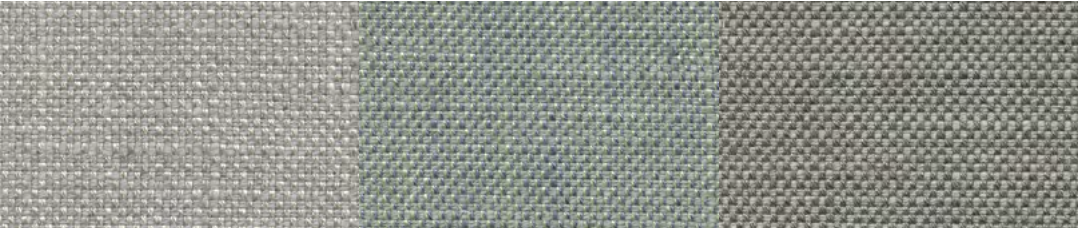
R851 col.13

R852 col.15



R850 col.11

R846 col.07



R849 col.10

R855 col.19

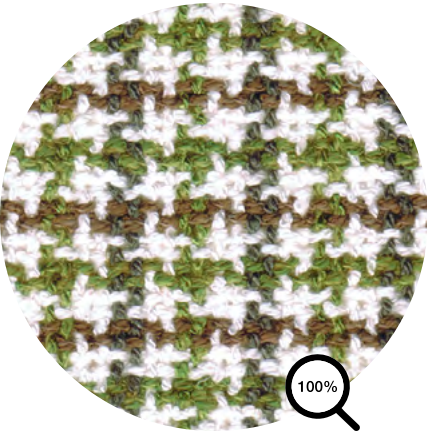
R848 col.09



# William

CAT.D

Information



typology	<b>Fabric</b>
category	<b>D</b>
composition	<b>56%CO 30%VI 14%LI</b>
height	<b>cm 140</b>
weight	<b>900 gr/mtl</b>
martindale	<b>36.000</b>
pilling	<b>3/4</b>
light fastness	<b>4/5</b>
fire resistance	<b>BS 5852 source 0, cigarette test</b>

washing information



## Legenda

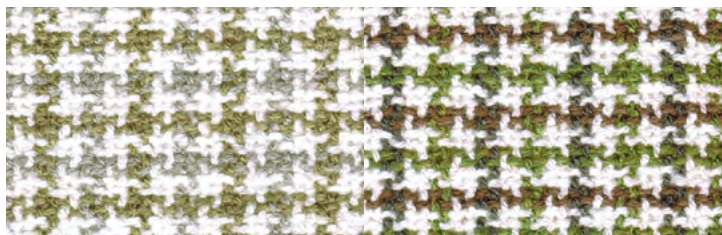
	Hand wash. Delicate wash. Maximum temperature: 30°/40°. Use neutral soap without optical whiteners.
	Dry clean only. Do not wash in water. Treat with care when damp.
	Machine wash up to 40°.
	Dry cleaning with perchlorethylene, chlorinated solvents and mineral essences (perchlorethylene solvents, hydrocarbons, R113 and R11). The garment is washable with normal procedures but without the use of trichlorethylene (or trichlorethylene).
	Dry clean with tetrachloroethylene, monofluorotrichloromethane, trifluorochloroethane, hydrocarbons. Severely limit the amount of water added and/or the mechanical action and washing and drying temperatures. Do not dry clean at automatic coin-operated laundry facilities.
	Do not dry clean.
	Dry clean with hydrocarbons and trifluoro-trichloroethane.
	Do not tumble dry.
	Warm iron (max 110° C)
	Warm iron (max 150° C)
	Do not iron.
	Iron on the reverse side.
	Do not use chlorine bleach.
	Tumble dry.
	Wet-cleaning.

CO	cotton
LI	linen
PA	polyamide
PC	acrylic
PES	Polyethersulfone
PL	polyester
PP	polypropylene
PU	polyurethane
RA	rami
SE	silk
VI	viscose
WO	wool
WS	cashmere
WV	virgin wool

# William

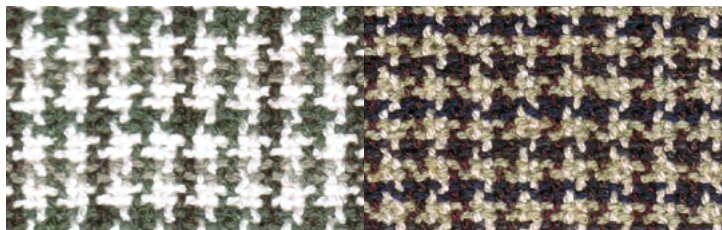
CAT.D

Variants



R375 col.423.080

R374 col.423.072

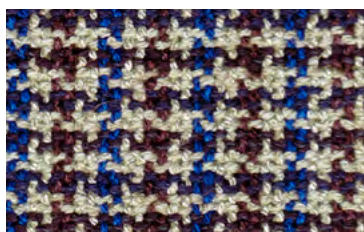


R376 col.423.091

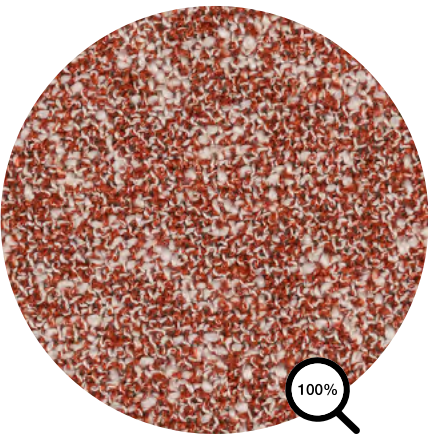
R372 col.423.005



R373 col.423.051



R371 col.423.004



typology	<b>Fabric</b>
category	<b>G</b>
composition	<b>65%CO 20%PAN 15%PL</b>
height	<b>cm 140</b>
weight	<b>750 gr/mtl</b>
martindale	<b>70.000</b>
pilling	<b>5</b>
light fastness	<b>5/6</b>
fire resistance	<b>BS 5852 CRIB 5 with treatment, EN 1021-1</b>

washing information



Legenda

	Hand wash. Delicate wash. Maximum temperature: 30°/40°. Use neutral soap without optical whiteners.	CO	cotton
	Dry clean only. Do not wash in water. Treat with care when damp.	LI	linen
	Machine wash up to 40°.	PA	polyamide
	Dry cleaning with perchlorethylene, chlorinated solvents and mineral essences (perchlorethylene solvents, hydrocarbons, R113 and R11). The garment is washable with normal procedures but without the use of trichlorethylene (or trichlorethylene).	PC	acrylic
	Dry clean with tetrachloroethylene, monofluorotrichloromethane, trifluorochloroethane, hydrocarbons. Severely limit the amount of water added and/or the mechanical action and washing and drying temperatures. Do not dry clean at automatic coin-operated laundry facilities.	PES	Polyethersulfone
	Do not dry clean.	PL	polyester
	Dry clean with hydrocarbons and trifluoro-trichloroethane.	PP	polypropylene
	Do not tumble dry.	PU	polyurethane
	Warm iron (max 110° C)	RA	rami
	Warm iron (max 150° C)	SE	silk
	Do not iron.	VI	viscose
	Iron on the reverse side.	WO	wool
	Do not use chlorine bleach.	WS	cashmere
	Tumble dry.	WV	virgin wool
	Wet-cleaning.		

# Zero

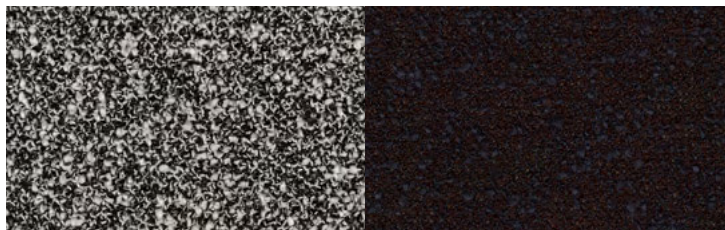
CAT.G

Variants



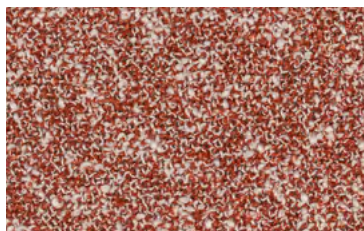
R594 col.001

R598 col.011



R595 col.004

R597 col.010



R596 col.008