

mdf italia

 Acerbis

Anilina		Moss	CAT.G
Anima	CAT.C	Nabuk	
Anouk	CAT.C	Noah	CAT.C
Cord weave		Nuvola	
Delhi		Opera	CAT.G
Delta	CAT.F	Paradise	CAT.E
Denim		Parigi	CAT.F
Dune	CAT.D	Portofino	CAT.E
Emmi	CAT.D	Ramiro	CAT.E
Etis	CAT.B	Saddle-hide	
Frank	CAT.C	Savanna	CAT.F
Garc	CAT.C	Sunday	CAT.G
Hero 2	CAT.G	Taiga	CAT.C
Keiga	CAT.G	Time TL15	CAT.B
Leather		Todi	CAT.B
Maia	CAT.B	William	CAT.D
Monaco	CAT.D	Zero	CAT.G



Anilina leather is intended for true connoisseurs, to those who can fully grasp the charm of genuine leather. Dyed in barrel without any kind of finishing, it is the closest to the concept of leather as nature has created it. The not forced drying, simply in the air, as it was done once, further embellishes its softness. All the natural characteristics, such as wrinkles, chiaroscuro effects and imperfections enhance its genuine beauty, making each hide a unique piece.

The inner side of the shell is covered with leather. The outer side of the shell is covered with micro-perforated leather.

The shell of Flow collection covered with Anilina leather is fully covered with leather, micro-perforated on the outer side. The seams are always in contrast colour.

typology	Leather
composition	Hides of European bovines
tanning	Mineral
grain	Printed
dyeing	Penetrating
finishing	Pure aniline
surface	Full grain
thickness	1,1/1,3 mm
average size	≥ 5 mq
dry friction	≥ 100 cycles
damp friction	≥ 25 cycles
flexing	≥ 10.000 cycles
light fastness	≥ 3 blue scale, dark colours
heat ageing	≥ 3 gray scale
fire resistance	ISO 1021:1-2, BS 5852 SOURCE 0-1, IMO FTP8 A652, CALIFORNIA TB 117-2013

washing information

ANILINA leather naturally shows differences in finish and color, visual irregularities, marks, shades and color unevenness, peculiarities of a natural material of the highest quality and synonymous of its value and uniqueness. Due to its extreme naturalness, it is also more delicate and sensitive than more treated leathers: the contact with liquids, with different materials and colors, as well as the direct exposure to the sunlight and heat sources could indelibly alter the color, while metal or sharp parts may affect the surface. For daily cleaning, simply dust with a soft, dry cloth. For a more thorough cleaning, it is expressly recommended to use specific products for leather, avoiding the use of water, soap and any aggressive detergents.

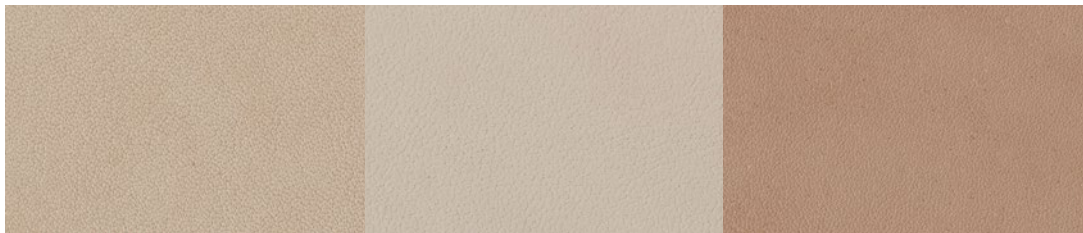
Legenda

	Hand wash. Delicate wash. Maximum temperature: 30°/40°. Use neutral soap without optical whiteners.
	Wash at a maximum temperature of 30°. Pay attention to the maximum degrees indicated, they can range from 30° to 95°.
	Dry clean only. Do not wash in water. Treat with care when damp.
	Dry clean with tetrachloroethylene, monofluorotrichloromethane, trifluorochloroethane, hydrocarbons. Severely limit the amount of water added and/or the mechanical action and washing and drying temperatures. Do not dry clean at automatic coin-operated laundry facilities.
	Dry clean with perchlorethylene
	Do not dry clean.
	Do not tumble dry.
	Tumble dry.
	Do not centrifugate.
	Iron at low temperature without steam (max 110°C).
	Ironing at moderate temperature (max 150°C).
	Iron on reverse.
	Do not iron.
	Do not use chlorine bleach.
	Wet-cleaning.
	Dry cleaning with hydrocarbons and trifluoro-trichloroethane.
	Dry at low temperatures.

CO	Cotton
LI	Linen
NY	Nylon
PA	Polyamide
PAN	Polyacrylic
PC	Acrylic
PES	Polyethersulfone
PL	Polyester
PP	Polypropylene
PU	Polyurethane
SE	Silk
VI	Viscose
WO	Wool
WV	virgin wool

Anilina

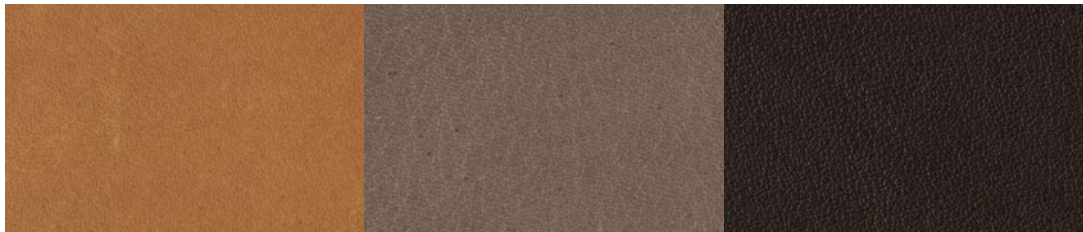
Variants



R702 col.4302

R706 col.4307

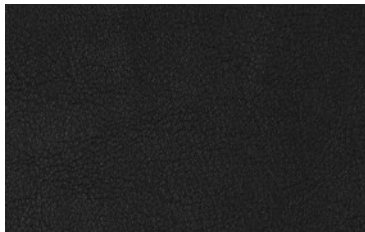
R703 col.4303



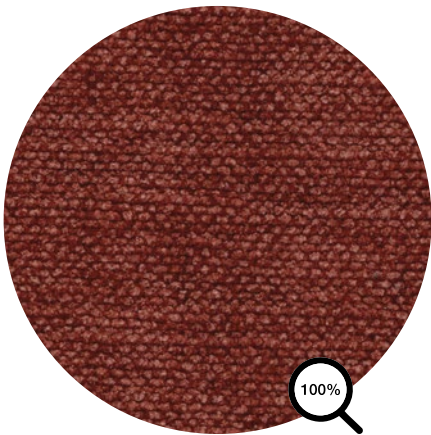
R705 col.4306

R704 col.4305

R707 col.4311



R701 col.4301



Piece-dyed with a rich palette, ANIMA blends ultra-microfiber and matte chenille in a refined jacquard texture with a strong sense of identity. With a finishing treatment that adds a subtly faded look to the fabric’s surface, there is a natural beauty to ANIMA that is elegant and captivating.

typology	Fabric
category	C
composition	85%PES 15%CO
height	cm 140
weight	742 gr/ml
martindale	100.000
pilling	4/5
light fastness	5/6
fire resistance	BS5852 SOURCE 0, EN 1021 PART 1: 2006, NFPA 260:2013, CAL TB-117: 2013

washing information



Legenda

	Hand wash. Delicate wash. Maximum temperature: 30°/40°. Use neutral soap without optical whiteners.
	Wash at a maximum temperature of 30°. Pay attention to the maximum degrees indicated, they can range from 30° to 95 °.
	Dry clean only. Do not wash in water. Treat with care when damp.
	Dry clean with tetrachloroethylene, monofluorotrichloromethane, trifluorochloroethane, hydrocarbons. Severely limit the amount of water added and/or the mechanical action and washing and drying temperatures. Do not dry clean at automatic coin-operated laundry facilities.
	Dry clean with perchlorethylene
	Do not dry clean.
	Do not tumble dry.
	Tumble dry.
	Do not centrifugate.
	Iron at low temperature without steam (max 110°C).
	Ironing at moderate temperature (max 150°C).
	Iron on reverse.
	Do not iron.
	Do not use chlorine bleach.
	Wet-cleaning.
	Dry cleaning with hydrocarbons and trifluoro-trichloroethane.
	Dry at low temperatures.

CO	Cotton
LI	Linen
NY	Nylon
PA	Polyamide
PAN	Polyacrylic
PC	Acrylic
PES	Polyethersulfone
PL	Polyester
PP	Polypropylene
PU	Polyurethane
SE	Silk
VI	Viscose
WO	Wool
WV	virgin wool

Anima

Variants

CAT.C



R632 col.05

R633 col.10

R634 col.12



R638 col.33

R637 col.30

R639 col.35



R640 col.45

R641 col.47

R642 col.53



R636 col.22

R644 col.60

R645 col.71



R635 col.19

R643 col.54



typology	Fabric
category	C
composition	100% PL recycled
height	cm 140 ± 3%
weight	700 g/ml ± 8%
martindale	≥ 80.000
pilling	≥ 4
light fastness	≥ 5
fire resistance	BS 5852-1:1979 CIGARETTE TEST, CAL TB-117: 2013

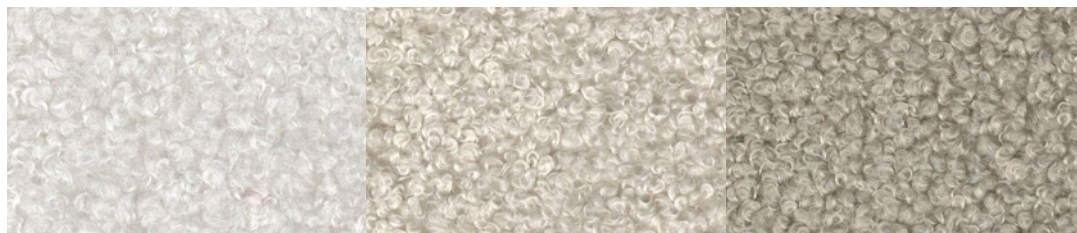
washing information



Legenda

	Hand wash. Delicate wash. Maximum temperature: 30°/40°. Use neutral soap without optical whiteners.
	Wash at a maximum temperature of 30°. Pay attention to the maximum degrees indicated, they can range from 30° to 95 °.
	Dry clean only. Do not wash in water. Treat with care when damp.
	Dry clean with tetrachloroethylene, monofluorotrichloromethane, trifluorochloroethane, hydrocarbons. Severely limit the amount of water added and/or the mechanical action and washing and drying temperatures. Do not dry clean at automatic coin-operated laundry facilities.
	Dry clean with perchlorethylene
	Do not dry clean.
	Do not tumble dry.
	Tumble dry.
	Do not centrifugate.
	Iron at low temperature without steam (max 110°C).
	Ironing at moderate temperature (max 150°C).
	Iron on reverse.
	Do not iron.
	Do not use chlorine bleach.
	Wet-cleaning.
	Dry cleaning with hydrocarbons and trifluoro-trichloroethane.
	Dry at low temperatures.

CO	Cotton
LI	Linen
NY	Nylon
PA	Polyamide
PAN	Polyacrylic
PC	Acrylic
PES	Polyethersulfone
PL	Polyester
PP	Polypropylene
PU	Polyurethane
SE	Silk
VI	Viscose
WO	Wool
WV	virgin wool



R766 col. 907

R767 col. 904

R768 col. 902



R769 col. 100

R770 col. 106

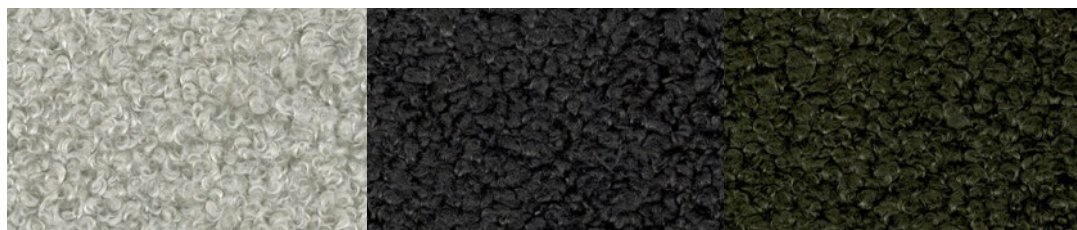
R776 col. 304



R775 col. 303

R774 col. 202

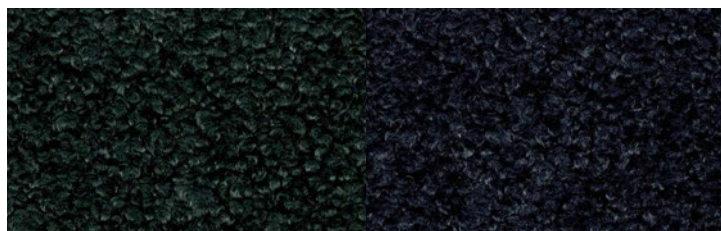
R773 col. 708



R772 col. 905

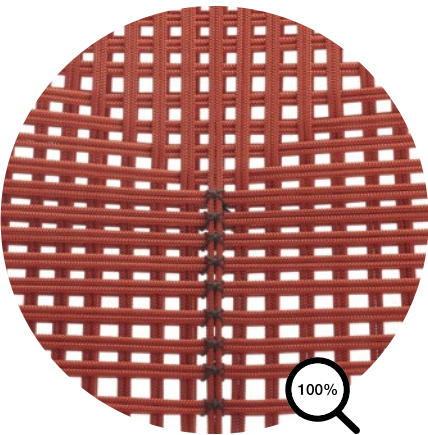
R771 col. 807

R777 col. 502



R778 col. 503

R779 col. 606



typology	Cord
tensile strength	Warp: 125 dan/5 cm - weft: 120 dan/5 cm
tear strength	Warp: 2.5 dan - weft: 2,5 dan/5 cm
light resistance	Level 6/8
heat resistance	+70°c
cold resistance	-30°c
column of water	Approx 1.000 mm

Use and maintenance

For correct washing, use a delicate neutral soap and water, and rinse thoroughly after washing, using only water. After cleaning, allow the fabric to dry correctly before folding it and putting it away, to avoid it getting mouldy.

Legenda

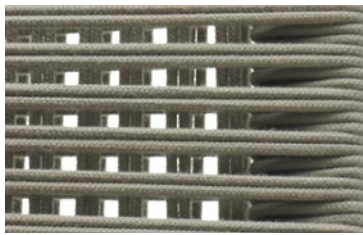
	Hand wash. Delicate wash. Maximum temperature: 30°/40°. Use neutral soap without optical whiteners.
	Wash at a maximum temperature of 30°. Pay attention to the maximum degrees indicated, they can range from 30° to 95 °.
	Dry clean only. Do not wash in water. Treat with care when damp.
	Dry clean with tetrachloroethylene, monofluorotrichloromethane, trifluorochloroethane, hydrocarbons. Severely limit the amount of water added and/or the mechanical action and washing and drying temperatures. Do not dry clean at automatic coin-operated laundry facilities.
	Dry clean with perchlorethylene
	Do not dry clean.
	Do not tumble dry.
	Tumble dry.
	Do not centrifugate.
	Iron at low temperature without steam (max 110°C).
	Ironing at moderate temperature (max 150°C).
	Iron on reverse.
	Do not iron.
	Do not use chlorine bleach.
	Wet-cleaning.
	Dry cleaning with hydrocarbons and trifluoro-trichloroethane.
	Dry at low temperatures.

CO	Cotton
LI	Linen
NY	Nylon
PA	Polyamide
PAN	Polyacrylic
PC	Acrylic
PES	Polyethersulfone
PL	Polyester
PP	Polypropylene
PU	Polyurethane
SE	Silk
VI	Viscose
WO	Wool
WV	virgin wool

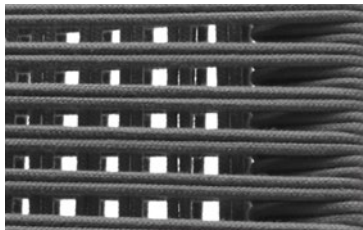
Cord weave

Neil Twist collection

Variants



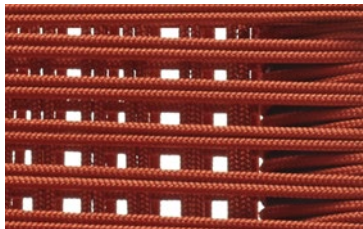
Matt ecru col.23



Matt anthracite grey col.03



Glossy English green col.17



Glossy orange col.11



Hand-woven from an irregular yarn, this raw silk is a triumph of shimmering colour and luminosity, making it soft and vibrant.



R397 col.140

R820 col.111

R821 col.153

typology	Fabric
category	G
composition	100%SE
height	cm 135

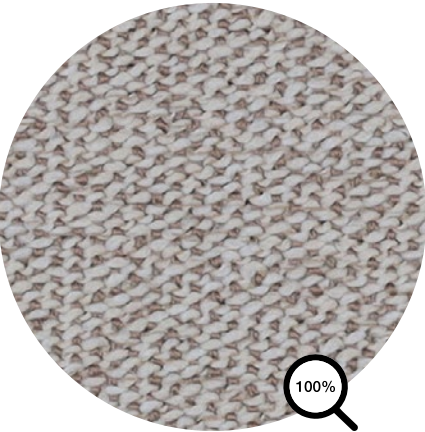
washing information



Legenda

- | | |
|--|---|
| | Hand wash. Delicate wash. Maximum temperature: 30°/40°. Use neutral soap without optical whiteners. |
| | Wash at a maximum temperature of 30°. Pay attention to the maximum degrees indicated, they can range from 30° to 95 °. |
| | Dry clean only. Do not wash in water. Treat with care when damp. |
| | Dry clean with tetrachloroethylene, monofluorotrichloromethane, trifluorochloroethane, hydrocarbons. Severely limit the amount of water added and/or the mechanical action and washing and drying temperatures. Do not dry clean at automatic coin-operated laundry facilities. |
| | Dry clean with perchlorethylene |
| | Do not dry clean. |
| | Do not tumble dry. |
| | Tumble dry. |
| | Do not centrifugate. |
| | Iron at low temperature without steam (max 110°C). |
| | Ironing at moderate temperature (max 150°C). |
| | Iron on reverse. |
| | Do not iron. |
| | Do not use chlorine bleach. |
| | Wet-cleaning. |
| | Dry cleaning with hydrocarbons and trifluoro-trichloroethane. |
| | Dry at low temperatures. |

- | | |
|-----|------------------|
| CO | Cotton |
| LI | Linen |
| NY | Nylon |
| PA | Polyamide |
| PAN | Polyacrylic |
| PC | Acrylic |
| PES | Polyethersulfone |
| PL | Polyester |
| PP | Polypropylene |
| PU | Polyurethane |
| SE | Silk |
| VI | Viscose |
| WO | Wool |
| WV | virgin wool |



100% Recyclable.
100% Non toxic (EU and USA standard).
Anti-allergic.
Resistant to fungus, bacteria, sunlight, humidity, chlorine, food stains and sweat.
Compatible with delicate baby skin.
Eco-friendly (low energy for cleaning, long lasting life cycle, easy to use).

typology	Outdoor fabric
category	F
composition	80% PP - 20% PL
height	cm 140
weight	814 gr/mtl
martindale	80.000
pilling	4/5
light fastness	7/8
fire resistance	TB117-2013 / CIGARETTE BS5852.1.1979

washing information



Legenda

	Hand wash. Delicate wash. Maximum temperature: 30°/40°. Use neutral soap without optical whiteners.
	Wash at a maximum temperature of 30°. Pay attention to the maximum degrees indicated, they can range from 30° to 95 °.
	Dry clean only. Do not wash in water. Treat with care when damp.
	Dry clean with tetrachloroethylene, monofluorotrichloromethane, trifluorochloroethane, hydrocarbons. Severely limit the amount of water added and/or the mechanical action and washing and drying temperatures. Do not dry clean at automatic coin-operated laundry facilities.
	Dry clean with perchlorethylene
	Do not dry clean.
	Do not tumble dry.
	Tumble dry.
	Do not centrifugate.
	Iron at low temperature without steam (max 110°C).
	Ironing at moderate temperature (max 150°C).
	Iron on reverse.
	Do not iron.
	Do not use chlorine bleach.
	Wet-cleaning.
	Dry cleaning with hydrocarbons and trifluoro-trichloroethane.
	Dry at low temperatures.

CO	Cotton
LI	Linen
NY	Nylon
PA	Polyamide
PAN	Polyacrylic
PC	Acrylic
PES	Polyethersulfone
PL	Polyester
PP	Polypropylene
PU	Polyurethane
SE	Silk
VI	Viscose
WO	Wool
WV	virgin wool

CAT.F



R692 col.015

R691 col.02/1

R698 col.80/1



R693 col.01/1

R694 col.03



R695 col.03/1

R696 col.02/3

R697 col.15/1



R699 col.01/6

R700 col.80



R720 col.01/5

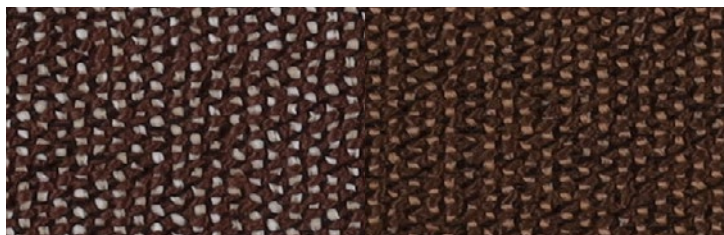
R721 col.90

R722 col.01

Delta

CAT.F

Variants



R723 col.02

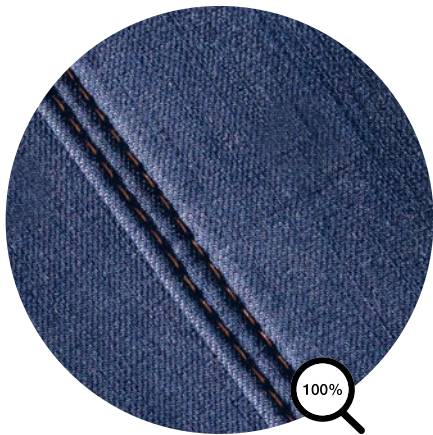
R724 col.45



R725 col.45/1

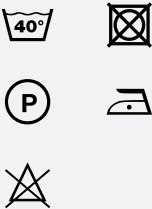
R726 col.01/3

R727 col.01/4



typology	Fabric - Denim
composition	80%CO 18%PL 2% ELASTAM
width	cm 131
weight	290 gm/m²
martindale	50.000
pilling	4/5
light fastness	4

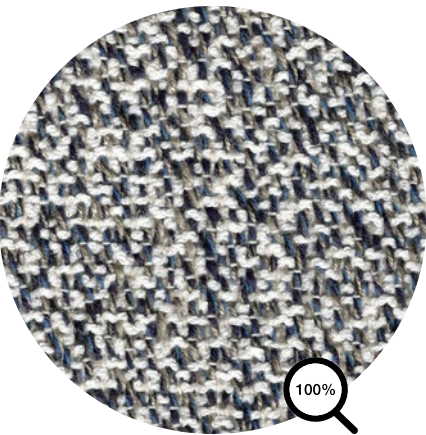
washing information



Legenda

	Hand wash. Delicate wash. Maximum temperature: 30°/40°. Use neutral soap without optical whiteners.
	Wash at a maximum temperature of 30°. Pay attention to the maximum degrees indicated, they can range from 30° to 95 °.
	Dry clean only. Do not wash in water. Treat with care when damp.
	Dry clean with tetrachloroethylene, monofluorotrichloromethane, trifluorochloroethane, hydrocarbons. Severely limit the amount of water added and/or the mechanical action and washing and drying temperatures. Do not dry clean at automatic coin-operated laundry facilities.
	Dry clean with perchlorethylene
	Do not dry clean.
	Do not tumble dry.
	Tumble dry.
	Do not centrifugate.
	Iron at low temperature without steam (max 110°C).
	Ironing at moderate temperature (max 150°C).
	Iron on reverse.
	Do not iron.
	Do not use chlorine bleach.
	Wet-cleaning.
	Dry cleaning with hydrocarbons and trifluoro-trichloroethane.
	Dry at low temperatures.

CO	Cotton
LI	Linen
NY	Nylon
PA	Polyamide
PAN	Polyacrylic
PC	Acrylic
PES	Polyethersulfone
PL	Polyester
PP	Polypropylene
PU	Polyurethane
SE	Silk
VI	Viscose
WO	Wool
WV	virgin wool



typology	Fabric
category	D
composition	50%CO 33%VI 17%LI
height	cm 140
weight	960 gr/mtl
martindale	35.000
pilling	4/5
light fastness	5
fire resistance	BS 5852 SOURCE 0, CIGARETTE TEST, CALIFORNIA TB 117-2013

washing information



Legenda

	Hand wash. Delicate wash. Maximum temperature: 30°/40°. Use neutral soap without optical whiteners.
	Wash at a maximum temperature of 30°. Pay attention to the maximum degrees indicated, they can range from 30° to 95 °.
	Dry clean only. Do not wash in water. Treat with care when damp.
	Dry clean with tetrachloroethylene, monofluorotrichloromethane, trifluorochloroethane, hydrocarbons. Severely limit the amount of water added and/or the mechanical action and washing and drying temperatures. Do not dry clean at automatic coin-operated laundry facilities.
	Dry clean with perchlorethylene
	Do not dry clean.
	Do not tumble dry.
	Tumble dry.
	Do not centrifugate.
	Iron at low temperature without steam (max 110°C).
	Ironing at moderate temperature (max 150°C).
	Iron on reverse.
	Do not iron.
	Do not use chlorine bleach.
	Wet-cleaning.
	Dry cleaning with hydrocarbons and trifluoro-trichloroethane.
	Dry at low temperatures.

CO	Cotton
LI	Linen
NY	Nylon
PA	Polyamide
PAN	Polyacrylic
PC	Acrylic
PES	Polyethersulfone
PL	Polyester
PP	Polypropylene
PU	Polyurethane
SE	Silk
VI	Viscose
WO	Wool
WV	virgin wool

Dune

Variants

CAT.D



R364 col.428.103

R361 col.428.039

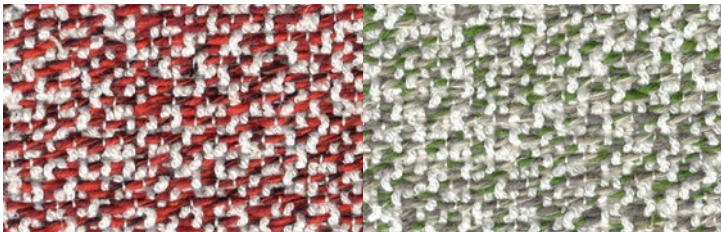
R357 col.428.000



R359 col.428.034

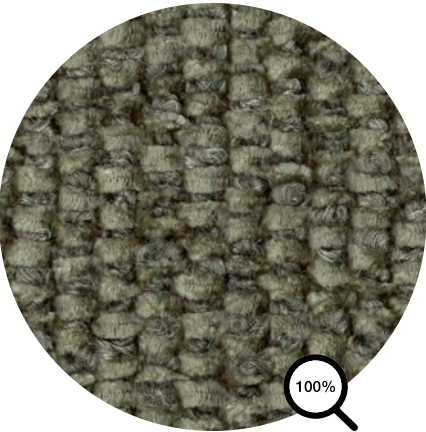
R363 col.428.050

R358 col.428.010



R360 col.428.035

R362 col.428.043



typology	Fabric
category	D
composition	36% PC - 23% PL - 20% CO - 14% VI - 7% WO
height	cm 140
weight	910 gr/mtl ± 5%
martindale	40.000
pilling	4
light fastness	5/6
fire resistance	BS 5852-1:1979 SOURCE 0, CALIFORNIA TB 117-2013

washing information



Legenda

	Hand wash. Delicate wash. Maximum temperature: 30°/40°. Use neutral soap without optical whiteners.
	Wash at a maximum temperature of 30°. Pay attention to the maximum degrees indicated, they can range from 30° to 95 °.
	Dry clean only. Do not wash in water. Treat with care when damp.
	Dry clean with tetrachloroethylene, monofluorotrichloromethane, trifluorochloroethane, hydrocarbons. Severely limit the amount of water added and/or the mechanical action and washing and drying temperatures. Do not dry clean at automatic coin-operated laundry facilities.
	Dry clean with perchlorethylene
	Do not dry clean.
	Do not tumble dry.
	Tumble dry.
	Do not centrifugate.
	Iron at low temperature without steam (max 110°C).
	Ironing at moderate temperature (max 150°C).
	Iron on reverse.
	Do not iron.
	Do not use chlorine bleach.
	Wet-cleaning.
	Dry cleaning with hydrocarbons and trifluoro-trichloroethane.
	Dry at low temperatures.

CO	Cotton
LI	Linen
NY	Nylon
PA	Polyamide
PAN	Polyacrylic
PC	Acrylic
PES	Polyethersulfone
PL	Polyester
PP	Polypropylene
PU	Polyurethane
SE	Silk
VI	Viscose
WO	Wool
WV	virgin wool

Emmi

Variants

CAT.D



R758 col. 20

R762 col. 30

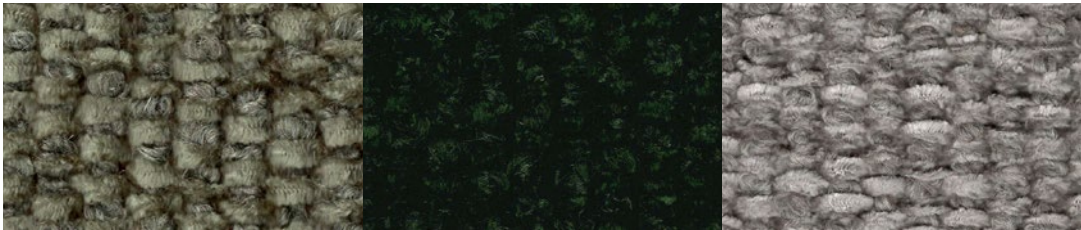
R763 col. 32



R761 col. 15

R760 col. 5

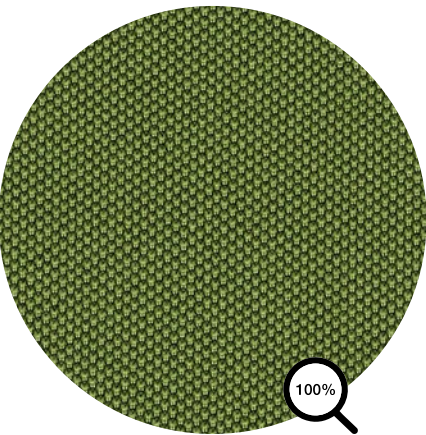
R764 col. 13



R759 col. 1

R765 col. 36

R757 col. 9



typology	Fabric
category	B
composition	100%PL - 100% recycled polyester
height	cm 140
weight	525 gr/mtl
martindale	100.000
pilling	5
light fastness	5/6
fire resistance	TB 117:2013 SECTION 1, UNI EN 1021-1, UNI EN 1021-2

washing information

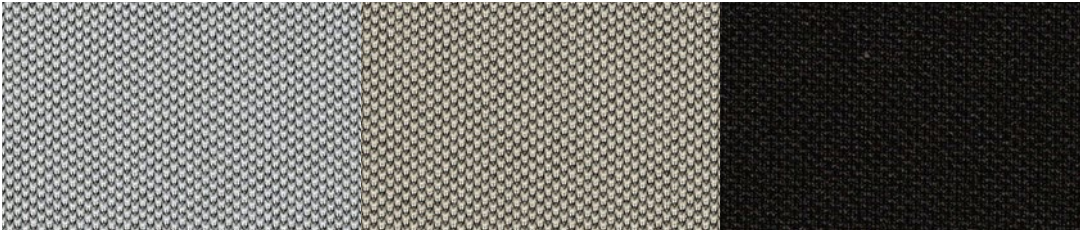


Legenda

	Hand wash. Delicate wash. Maximum temperature: 30°/40°. Use neutral soap without optical whiteners.
	Wash at a maximum temperature of 30°. Pay attention to the maximum degrees indicated, they can range from 30° to 95 °.
	Dry clean only. Do not wash in water. Treat with care when damp.
	Dry clean with tetrachloroethylene, monofluorotrichloromethane, trifluorochloroethane, hydrocarbons. Severely limit the amount of water added and/or the mechanical action and washing and drying temperatures. Do not dry clean at automatic coin-operated laundry facilities.
	Dry clean with perchlorethylene
	Do not dry clean.
	Do not tumble dry.
	Tumble dry.
	Do not centrifugate.
	Iron at low temperature without steam (max 110°C).
	Ironing at moderate temperature (max 150°C).
	Iron on reverse.
	Do not iron.
	Do not use chlorine bleach.
	Wet-cleaning.
	Dry cleaning with hydrocarbons and trifluoro-trichloroethane.
	Dry at low temperatures.

CO	Cotton
LI	Linen
NY	Nylon
PA	Polyamide
PAN	Polyacrylic
PC	Acrylic
PES	Polyethersulfone
PL	Polyester
PP	Polypropylene
PU	Polyurethane
SE	Silk
VI	Viscose
WO	Wool
WV	virgin wool

CAT.B



R629 col.36

R621 col.16

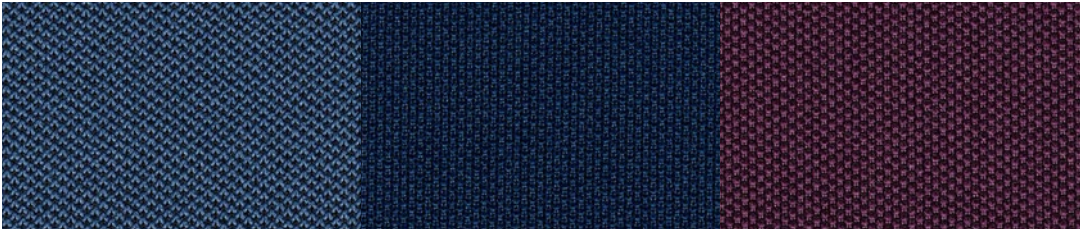
R631 col.40



R622 col.17

R630 col.39

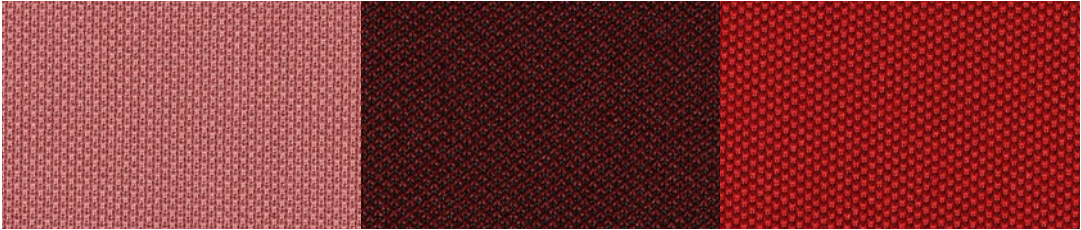
R626 col.27



R625 col.22

R624 col.21

R623 col.19



R616 col.6

R614 col.1

R615 col.2



R617 col.7

R619 col.9

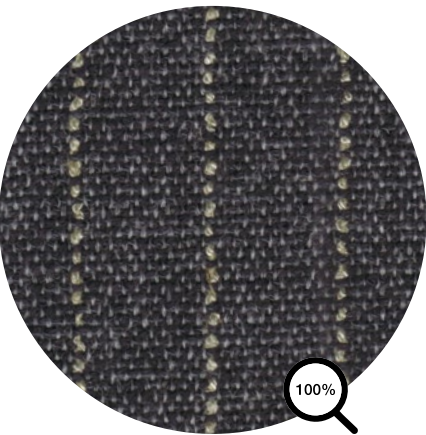
R618 col.8



R620 col.11

R628 col.32

R627 col.31



typology	Fabric
category	C
composition	52%CO 20%VI 18%WO 10%LI
height	cm 140
weight	650 gr/mtl
martindale	30.000
pilling	3/4
light fastness	4/5
fire resistance	BS 5852 SOURCE 0, CIGARETTE TEST, CALIFORNIA TB 117-2013

washing information



Legenda

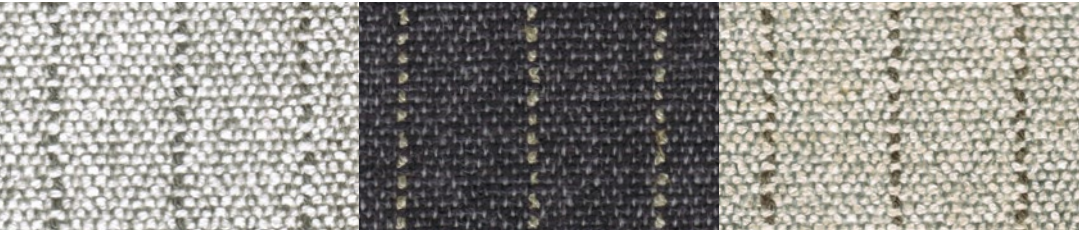
	Hand wash. Delicate wash. Maximum temperature: 30°/40°. Use neutral soap without optical whiteners.
	Wash at a maximum temperature of 30°. Pay attention to the maximum degrees indicated, they can range from 30° to 95 °.
	Dry clean only. Do not wash in water. Treat with care when damp.
	Dry clean with tetrachloroethylene, monofluorotrichloromethane, trifluorochloroethane, hydrocarbons. Severely limit the amount of water added and/or the mechanical action and washing and drying temperatures. Do not dry clean at automatic coin-operated laundry facilities.
	Dry clean with perchlorethylene
	Do not dry clean.
	Do not tumble dry.
	Tumble dry.
	Do not centrifugate.
	Iron at low temperature without steam (max 110°C).
	Ironing at moderate temperature (max 150°C).
	Iron on reverse.
	Do not iron.
	Do not use chlorine bleach.
	Wet-cleaning.
	Dry cleaning with hydrocarbons and trifluoro-trichloroethane.
	Dry at low temperatures.

CO	Cotton
LI	Linen
NY	Nylon
PA	Polyamide
PAN	Polyacrylic
PC	Acrylic
PES	Polyethersulfone
PL	Polyester
PP	Polypropylene
PU	Polyurethane
SE	Silk
VI	Viscose
WO	Wool
WV	virgin wool

Frank

Variants

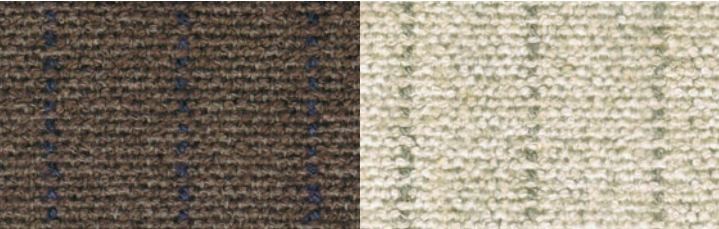
CAT.C



R352 col.419.003

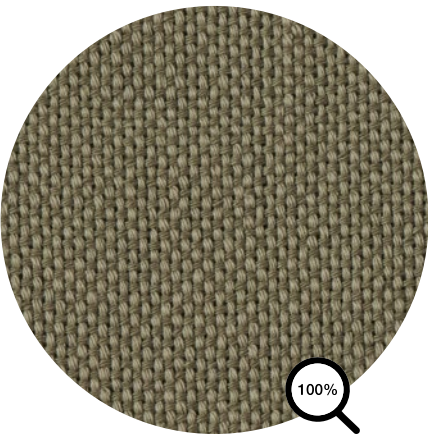
R355 col.419.020

R353 col.419.010



R356 col.419.041

R354 col.419.011



typology	Fabric
category	C
composition	100%CO
height	cm 140
weight	830 gr/mtl
martindale	30.000
pilling	3/4
light fastness - light colours	4/5
light fastness - dark/medium colours	5
fire resistance	UNI EN 1021-2:2014, BS 5852 1 MATCH TEST

washing information

Legenda

	Hand wash. Delicate wash. Maximum temperature: 30°/40°. Use neutral soap without optical whiteners.
	Wash at a maximum temperature of 30°. Pay attention to the maximum degrees indicated, they can range from 30° to 95 °.
	Dry clean only. Do not wash in water. Treat with care when damp.
	Dry clean with tetrachloroethylene, monofluorotrichloromethane, trifluorochloroethane, hydrocarbons. Severely limit the amount of water added and/or the mechanical action and washing and drying temperatures. Do not dry clean at automatic coin-operated laundry facilities.
	Dry clean with perchlorethylene
	Do not dry clean.
	Do not tumble dry.
	Tumble dry.
	Do not centrifugate.
	Iron at low temperature without steam (max 110°C).
	Ironing at moderate temperature (max 150°C).
	Iron on reverse.
	Do not iron.
	Do not use chlorine bleach.
	Wet-cleaning.
	Dry cleaning with hydrocarbons and trifluoro-trichloroethane.
	Dry at low temperatures.

CO	Cotton
LI	Linen
NY	Nylon
PA	Polyamide
PAN	Polyacrylic
PC	Acrylic
PES	Polyethersulfone
PL	Polyester
PP	Polypropylene
PU	Polyurethane
SE	Silk
VI	Viscose
WO	Wool
WV	virgin wool

CAT.C



R534 col.070

R535 col.111

R538 col.416



R536 col.116

R540 col.436

R533 col.046



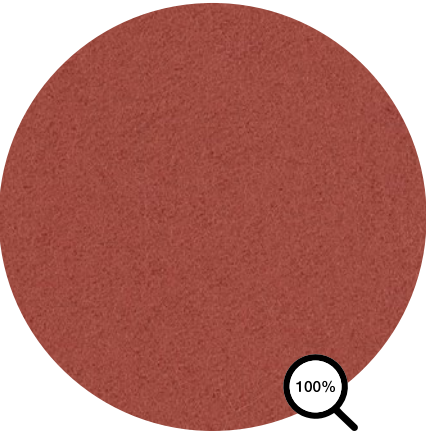
R539 col.424

R537 col.191

Hero 2

CAT.G

Information



typology	Fabric
category	G
composition	97%WO 3%RECYCLED NY
height	cm 140
weight	580 gr/mtl
martindale	45.000
pilling	3/4
light fastness	5/6
fire resistance	BS 5852 PART 1(SOURCE 0 & 1), EN 1021-PARTS 1&2, IMO FTP CODE 2010 PART 8, NF D 60 013, SN 198 898 5.3 WITH TREATMENT, UNI 9175 1IM, US CAL. BULL. 117-2013, AS/NZS 3837, CLASS 2

washing information



Legenda

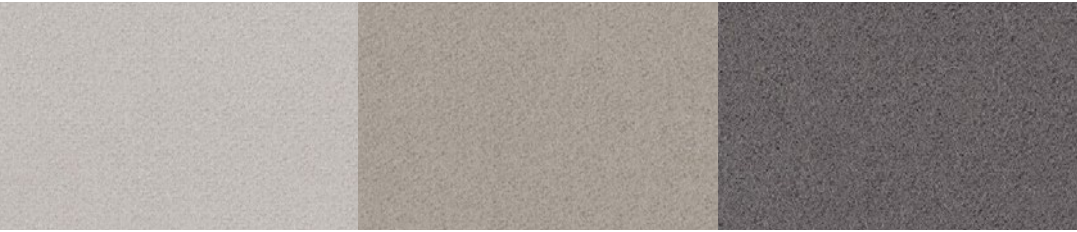
	Hand wash. Delicate wash. Maximum temperature: 30°/40°. Use neutral soap without optical whiteners.
	Wash at a maximum temperature of 30°. Pay attention to the maximum degrees indicated, they can range from 30° to 95 °.
	Dry clean only. Do not wash in water. Treat with care when damp.
	Dry clean with tetrachloroethylene, monofluorotrichloromethane, trifluorochloroethane, hydrocarbons. Severely limit the amount of water added and/or the mechanical action and washing and drying temperatures. Do not dry clean at automatic coin-operated laundry facilities.
	Dry clean with perchlorethylene
	Do not dry clean.
	Do not tumble dry.
	Tumble dry.
	Do not centrifugate.
	Iron at low temperature without steam (max 110°C).
	Ironing at moderate temperature (max 150°C).
	Iron on reverse.
	Do not iron.
	Do not use chlorine bleach.
	Wet-cleaning.
	Dry cleaning with hydrocarbons and trifluoro-trichloroethane.
	Dry at low temperatures.

CO	Cotton
LI	Linen
NY	Nylon
PA	Polyamide
PAN	Polyacrylic
PC	Acrylic
PES	Polyethersulfone
PL	Polyester
PP	Polypropylene
PU	Polyurethane
SE	Silk
VI	Viscose
WO	Wool
WV	virgin wool

Hero 2

Variants

CAT.G



R665 col.102

R670 col.212

R667 col.162



R672 col.312

R673 col.352

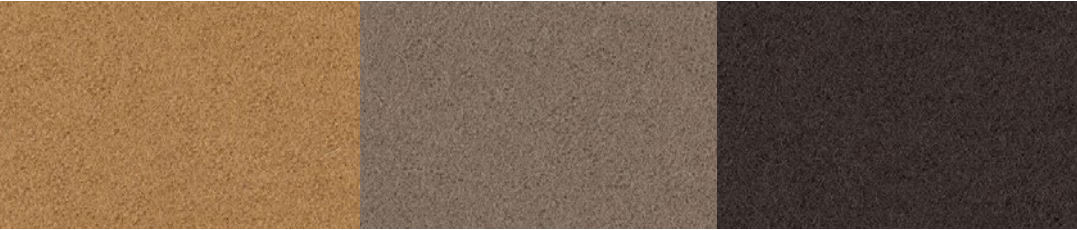
R674 col.372



R677 col.512

R678 col.542

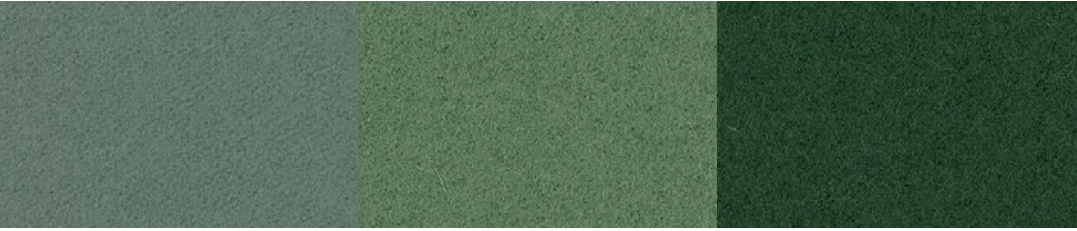
R680 col.582



R676 col.432

R671 col.242

R675 col.392



R685 col.932

R686 col.942

R687 col.962



R682 col.752

R683 col.772

R684 col.882

Hero 2

Variants

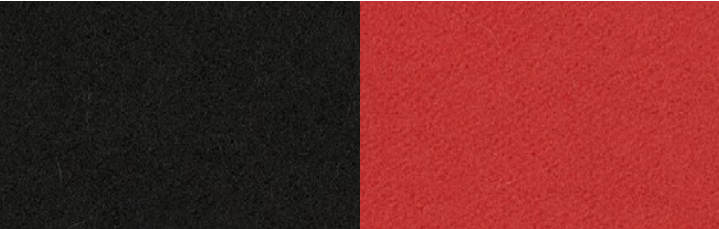
CAT.G



R681 col.732

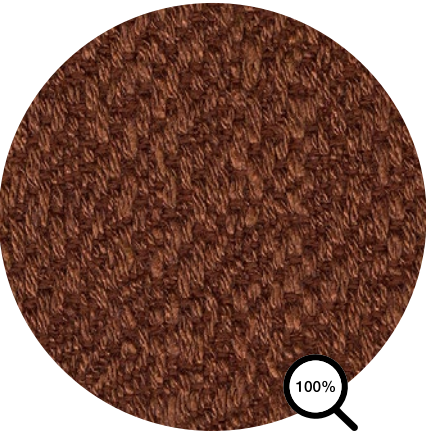
R666 col.152

R668 col.182



R669 col.192

R679 col.552



Rich in nuance like a Nordic landscape and suitable for any furnishing style. Keiga is a foundational fabric that works with everything, vintage or modern, angular or organic, art deco or light toned Scandi. Matt wool grounds the rich structure, enlivened by the contrast from the shiny yarns. Colours drawn from Norwegian nature include pine tree, silver grey, pink blush, charcoal, russet, bear brown, black and a signature glacier blue.

typology	Fabric
category	G
composition	38%WV 37%VI 16%LI 9%NY
height	140 cm
weight	740 gr/mlt
martindale	50.000
pilling	3-4
light fastness	6
fire resistance	US CAL.BULL. 117-2013, EN 1021-1/2, BS 5852 PART 1, UNI 9175 1IM, BS 5852 CRIB 5 WITH TREATMENT, AS/NZS 3837 CLASS 2



washing information



Legenda

	Hand wash. Delicate wash. Maximum temperature: 30°/40°. Use neutral soap without optical whiteners.
	Wash at a maximum temperature of 30°. Pay attention to the maximum degrees indicated, they can range from 30° to 95 °.
	Dry clean only. Do not wash in water. Treat with care when damp.
	Dry clean with tetrachloroethylene, monofluorotrichloromethane, trifluorochloroethane, hydrocarbons. Severely limit the amount of water added and/or the mechanical action and washing and drying temperatures. Do not dry clean at automatic coin-operated laundry facilities.
	Dry clean with perchlorethylene
	Do not dry clean.
	Do not tumble dry.
	Tumble dry.
	Do not centrifugate.
	Iron at low temperature without steam (max 110°C).
	Ironing at moderate temperature (max 150°C).
	Iron on reverse.
	Do not iron.
	Do not use chlorine bleach.
	Wet-cleaning.
	Dry cleaning with hydrocarbons and trifluoro-trichloroethane.
	Dry at low temperatures.

CO	Cotton
LI	Linen
NY	Nylon
PA	Polyamide
PAN	Polyacrylic
PC	Acrylic
PES	Polyethersulfone
PL	Polyester
PP	Polypropylene
PU	Polyurethane
SE	Silk
VI	Viscose
WO	Wool
WV	virgin wool

CAT.G



R728 col.0112

R729 col.0142

R730 col.0182



R731 col.0192

R732 col.0222

R733 col.0232



R734 col.0242

R735 col.0252

R736 col.0362



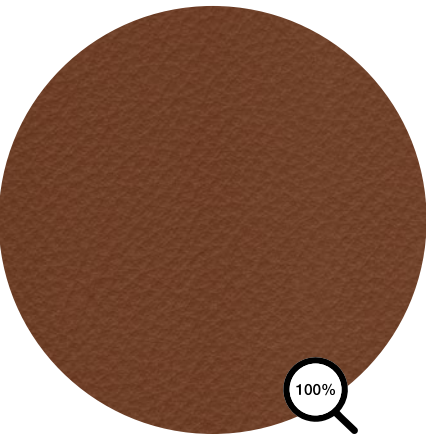
R737 col.0382

R738 col.0422

R739 col.0572



R740 col.0982



Top-grain leather, aniline dyed, natural grain, finished with light pigmented polymers, soft touch. Color proposals vary up to 17 color variations.

typology	Hides of European bovines.	washing information
composition	Chemicals used for tanning, dying and finishing the leather do not contain substances which are hazardous for human health and the environment.	The upholstery is in totally natural, prime quality full grain saddle-hide. It is very sensitive: be careful of liquids or other substances that could alter the colour of the leather, and also of metallic or sharp parts that could leave marks on the surface.
height	4.5/5 sqm	CLEANING AND MAINTENANCE
thickness	1.3/1.5 mm	Only use specific leather cleaners.
light fastness	> 6	/ Avoid direct exposure to sunlight and sources of heat. / Avoid contact between light and dark colours, and between different materials. / Dust with a soft dry cloth.
fire resistance	11M, UNI 8456 (1987), UNI 9174 (1987), UNI 9174/A1 (1996), UNI 9177 (1987)	

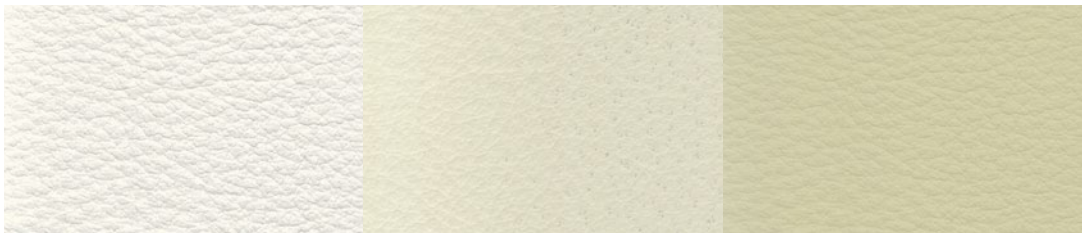
Legenda

	Hand wash. Delicate wash. Maximum temperature: 30°/40°. Use neutral soap without optical whiteners.
	Wash at a maximum temperature of 30°. Pay attention to the maximum degrees indicated, they can range from 30° to 95 °.
	Dry clean only. Do not wash in water. Treat with care when damp.
	Dry clean with tetrachloroethylene, monofluorotrichloromethane, trifluorochloroethane, hydrocarbons. Severely limit the amount of water added and/or the mechanical action and washing and drying temperatures. Do not dry clean at automatic coin-operated laundry facilities.
	Dry clean with perchlorethylene
	Do not dry clean.
	Do not tumble dry.
	Tumble dry.
	Do not centrifugate.
	Iron at low temperature without steam (max 110°C).
	Ironing at moderate temperature (max 150°C).
	Iron on reverse.
	Do not iron.
	Do not use chlorine bleach.
	Wet-cleaning.
	Dry cleaning with hydrocarbons and trifluoro-trichloroethane.
	Dry at low temperatures.

CO	Cotton
LI	Linen
NY	Nylon
PA	Polyamide
PAN	Polyacrylic
PC	Acrylic
PES	Polyethersulfone
PL	Polyester
PP	Polypropylene
PU	Polyurethane
SE	Silk
VI	Viscose
WO	Wool
WV	virgin wool

Leather

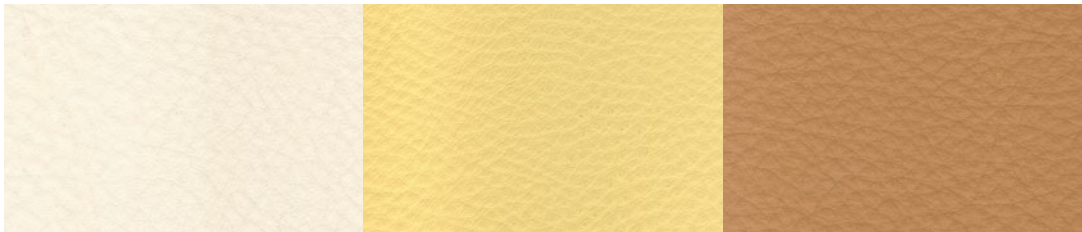
Variants



R804 col.white

R814 col.sand

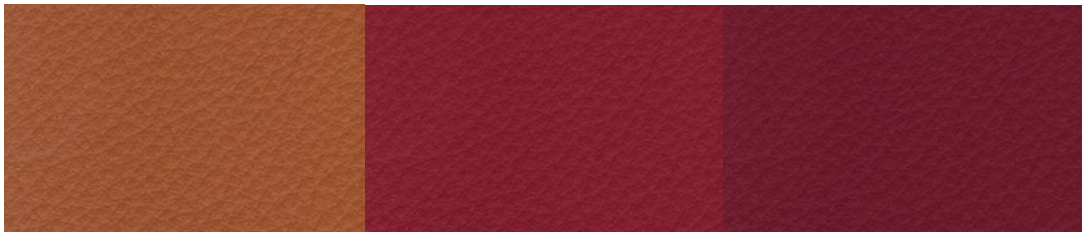
R803 col.beige



R802 col.ivory

R808 col.yellow

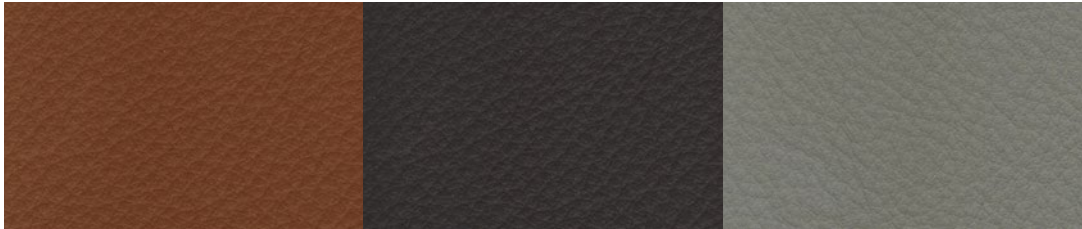
R801 col.apricot



R813 col.rust

R812 col.red

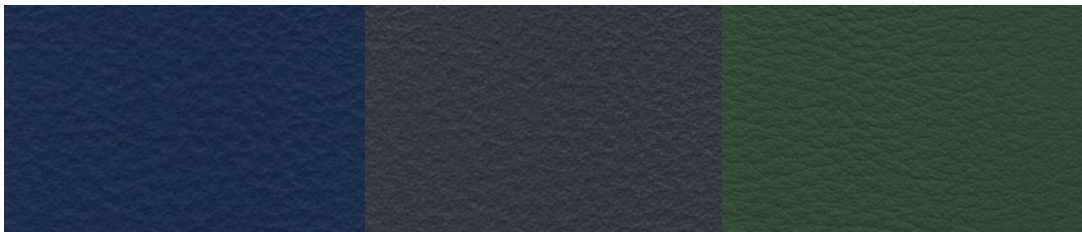
R807 col.burgundy



R815 col.tobacco

R816 col.Testa di Moro

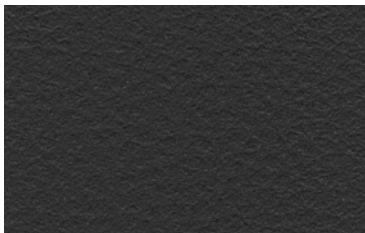
R809 col.grey



R806 col.bluettes

R805 col.blue

R817 col.green

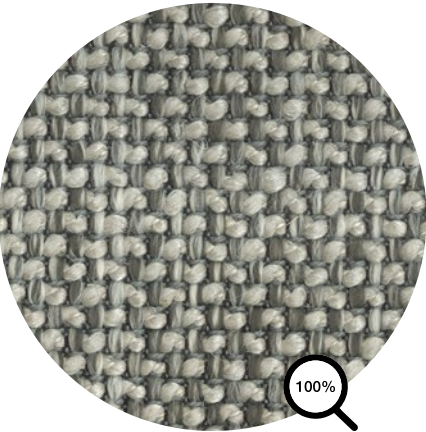


R810 col.black

Maia

CAT.B

Information



typology	Fabric
category	B
composition	36%CO 26%LI 18%BAMBOO 17%PP 3%PA
height	cm 140
weight	800 gr/mtl
martindale	30.000
pilling	4
light fastness	4/5
shrinkage %	warp -4, weft -2
fire resistance	BS 5852 SOURCE 0, CIGARETTE TEST, CALIFORNIA TB 117-2013

washing information



Legenda

	Hand wash. Delicate wash. Maximum temperature: 30°/40°. Use neutral soap without optical whiteners.
	Wash at a maximum temperature of 30°. Pay attention to the maximum degrees indicated, they can range from 30° to 95°.
	Dry clean only. Do not wash in water. Treat with care when damp.
	Dry clean with tetrachloroethylene, monofluorotrichloromethane, trifluorochloroethane, hydrocarbons. Severely limit the amount of water added and/or the mechanical action and washing and drying temperatures. Do not dry clean at automatic coin-operated laundry facilities.
	Dry clean with perchlorethylene
	Do not dry clean.
	Do not tumble dry.
	Tumble dry.
	Do not centrifugate.
	Iron at low temperature without steam (max 110°C).
	Ironing at moderate temperature (max 150°C).
	Iron on reverse.
	Do not iron.
	Do not use chlorine bleach.
	Wet-cleaning.
	Dry cleaning with hydrocarbons and trifluoro-trichloroethane.
	Dry at low temperatures.

CO	Cotton
LI	Linen
NY	Nylon
PA	Polyamide
PAN	Polyacrylic
PC	Acrylic
PES	Polyethersulfone
PL	Polyester
PP	Polypropylene
PU	Polyurethane
SE	Silk
VI	Viscose
WO	Wool
WV	virgin wool

Maia

Variants

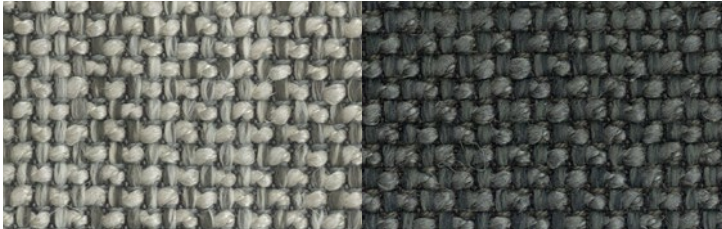
CAT.B



R217 col.01

R220 col.2/2

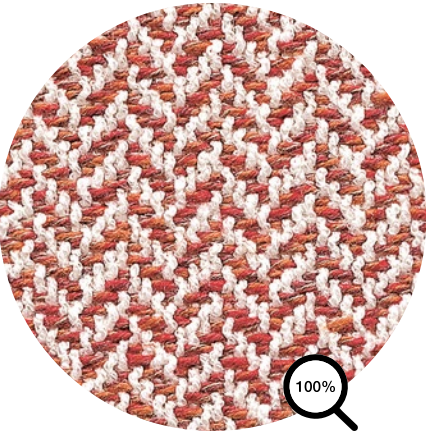
R218 col.08



R221 col.9/1

R219 col.10

CAT.D



typology	Fabric
category	D
composition	50%CO 17%LI 33%VI
height	cm 140
weight	950 gr/mtl
martindale	35.000
pilling	3/4
light fastness	4/5
fire resistance	BS 5852 SOURCE 0, CIGARETTE TEST, CALIFORNIA TB 117-2013

washing information



Legenda

	Hand wash. Delicate wash. Maximum temperature: 30°/40°. Use neutral soap without optical whiteners.
	Wash at a maximum temperature of 30°. Pay attention to the maximum degrees indicated, they can range from 30° to 95 °.
	Dry clean only. Do not wash in water. Treat with care when damp.
	Dry clean with tetrachloroethylene, monofluorotrichloromethane, trifluorochloroethane, hydrocarbons. Severely limit the amount of water added and/or the mechanical action and washing and drying temperatures. Do not dry clean at automatic coin-operated laundry facilities.
	Dry clean with perchlorethylene
	Do not dry clean.
	Do not tumble dry.
	Tumble dry.
	Do not centrifugate.
	Iron at low temperature without steam (max 110°C).
	Ironing at moderate temperature (max 150°C).
	Iron on reverse.
	Do not iron.
	Do not use chlorine bleach.
	Wet-cleaning.
	Dry cleaning with hydrocarbons and trifluoro-trichloroethane.
	Dry at low temperatures.

CO	Cotton
LI	Linen
NY	Nylon
PA	Polyamide
PAN	Polyacrylic
PC	Acrylic
PES	Polyethersulfone
PL	Polyester
PP	Polypropylene
PU	Polyurethane
SE	Silk
VI	Viscose
WO	Wool
WV	virgin wool

Monaco

Variants

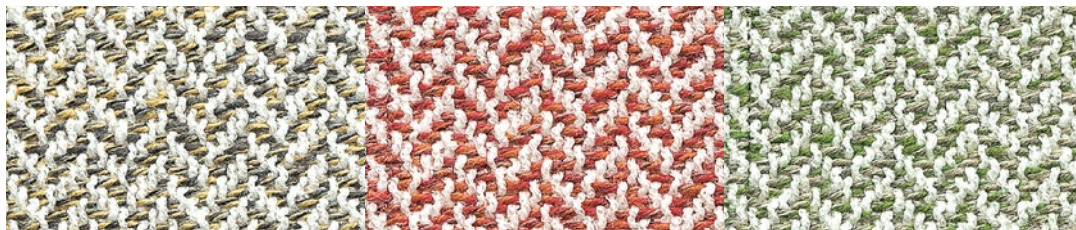
CAT.D



R313 col.443.000

R314 col.443.001

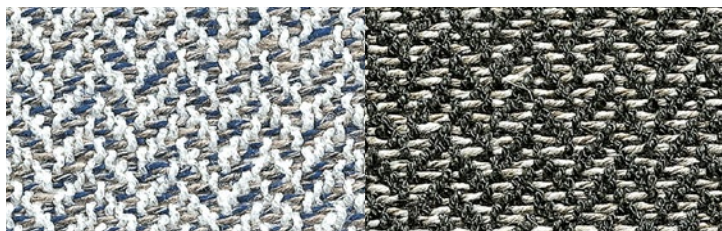
R319 col.443.040



R318 col.443.014

R315 col.443.007

R317 col.443.011



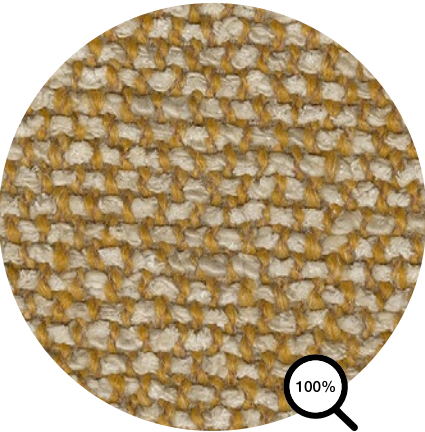
R316 col.443.010

R320 col.443.60

Moss

CAT.G

Information



typology	Fabric
category	G
composition	52%CO 22%VI 14%PAN 6%LI 3%PL 3%NY
height	cm 138
weight	920 gr/mtl
martindale	50.000
pilling	4/5
light fastness	5/7
fire resistance	BS 5852 CRIB 5 WITH TREATMENT, BS 5852 PART 1, EN 1021-1/2, US CAL. 117-2013 WITH CAL. 117 COMPLIANT INTERLINER, IMO FTP CODE 2010 PART 8

washing information



Legenda

	Hand wash. Delicate wash. Maximum temperature: 30°/40°. Use neutral soap without optical whiteners.
	Wash at a maximum temperature of 30°. Pay attention to the maximum degrees indicated, they can range from 30° to 95 °.
	Dry clean only. Do not wash in water. Treat with care when damp.
	Dry clean with tetrachloroethylene, monofluorotrichloromethane, trifluorochloroethane, hydrocarbons. Severely limit the amount of water added and/or the mechanical action and washing and drying temperatures. Do not dry clean at automatic coin-operated laundry facilities.
	Dry clean with perchlorethylene
	Do not dry clean.
	Do not tumble dry.
	Tumble dry.
	Do not centrifugate.
	Iron at low temperature without steam (max 110°C).
	Ironing at moderate temperature (max 150°C).
	Iron on reverse.
	Do not iron.
	Do not use chlorine bleach.
	Wet-cleaning.
	Dry cleaning with hydrocarbons and trifluoro-trichloroethane.
	Dry at low temperatures.

CO	Cotton
LI	Linen
NY	Nylon
PA	Polyamide
PAN	Polyacrylic
PC	Acrylic
PES	Polyethersulfone
PL	Polyester
PP	Polypropylene
PU	Polyurethane
SE	Silk
VI	Viscose
WO	Wool
WV	virgin wool

Moss

CAT.G

Variants



R648 col.04



R654 col.13



R653 col.12



R656 col.19



R657 col.21



R658 col.22



R652 col.11



R647 col.02



R646 col.01



R649 col.06



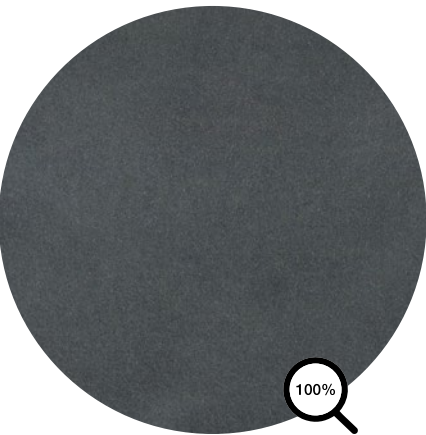
R655 col.15



R650 col.08



R651 col.10



Leather is natural and its particular nature is underscored by wrinkles and scars that characterise the quality and origin. Leathers from the best breeders are carefully selected and only a small percentage are considered for purchase. The natural characteristics of leather do not allow us to guarantee the perfect correspondence between sample colours and the colours of available leathers.

typology	Leather
composition	Hides of European bovines.
height	> 5 MQ
light fastness	3
thickness	1,1/1,3 mm
fire resistance	UNI EN 1021-1/2, BS 5852-0/1, IMO MED FTP8 A652
other information	Chemicals used for tanning, dying and finishing the leather do not contain substances which are hazardous for human health and the environment.
washing information	Nabuck and suede should be brushed periodically and cleaned with a vacuum cleaner. Spilt liquids should be soaked up immediately with a clean light-coloured cloth. A brush with soft bristles will help to restore the normal appearance of suede leather. Avoid exposure to direct sunlight. Avoid exposure to direct heat sources. Do not use aggressive cleaning products. Avoid contact between light and dark colours and also between different types of materials. Dust regularly with a soft, dry cloth.

Legenda

	Hand wash. Delicate wash. Maximum temperature: 30°/40°. Use neutral soap without optical whiteners.
	Wash at a maximum temperature of 30°. Pay attention to the maximum degrees indicated, they can range from 30° to 95°.
	Dry clean only. Do not wash in water. Treat with care when damp.
	Dry clean with tetrachloroethylene, monofluorotrichloromethane, trifluorochloroethane, hydrocarbons. Severely limit the amount of water added and/or the mechanical action and washing and drying temperatures. Do not dry clean at automatic coin-operated laundry facilities.
	Dry clean with perchlorethylene
	Do not dry clean.
	Do not tumble dry.
	Tumble dry.
	Do not centrifugate.
	Iron at low temperature without steam (max 110°C).
	Ironing at moderate temperature (max 150°C).
	Iron on reverse.
	Do not iron.
	Do not use chlorine bleach.
	Wet-cleaning.
	Dry cleaning with hydrocarbons and trifluoro-trichloroethane.
	Dry at low temperatures.

CO	Cotton
LI	Linen
NY	Nylon
PA	Polyamide
PAN	Polyacrylic
PC	Acrylic
PES	Polyethersulfone
PL	Polyester
PP	Polypropylene
PU	Polyurethane
SE	Silk
VI	Viscose
WO	Wool
WV	virgin wool

Nabuk

Variants



R826 col.3417

R827 col.3431

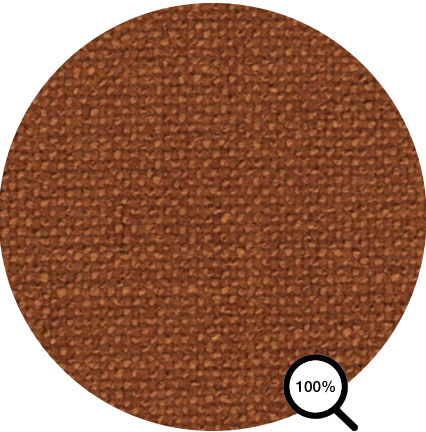
R825 col.3416



R823 col.3405

R824 col.3414

R822 col.3401



Noah is made out of 100% recycled polyester. It doesn't use any new raw materials and doesn't generate any waste. Subtly textured warp and weft yarns merge into a pleasantly soft weave with a minimalist quality. Noah's timeless design is simple to take care of and comes in a carefully selected colour palette of Mediterranean hues. Some details are important. Noah is made where we live and, like any other hometown, it's a place we want to keep flourishing. That's why we weave with recycled materials, certify our fabrics under OEKOTEX and work from a zero-waste, ISO 14001 accredited facility. Noah is PFC-free too.

typology	Fabric
category	C
composition	100% PES REC
height	140+4 cm
weight	667 gr/ml ± 5%
martindale	>100.000
pilling	4-5
light fastness	5-6
fire resistance	BS5852 SOURCE 0, EN1021-PART 1:2006, CAL TB 117:2013, NFPA 260:2013



washing information



Legenda

	Hand wash. Delicate wash. Maximum temperature: 30°/40°. Use neutral soap without optical whiteners.
	Wash at a maximum temperature of 30°. Pay attention to the maximum degrees indicated, they can range from 30° to 95 °.
	Dry clean only. Do not wash in water. Treat with care when damp.
	Dry clean with tetrachloroethylene, monofluorotrichloromethane, trifluorochloroethane, hydrocarbons. Severely limit the amount of water added and/or the mechanical action and washing and drying temperatures. Do not dry clean at automatic coin-operated laundry facilities.
	Dry clean with perchlorethylene
	Do not dry clean.
	Do not tumble dry.
	Tumble dry.
	Do not centrifugate.
	Iron at low temperature without steam (max 110°C).
	Ironing at moderate temperature (max 150°C).
	Iron on reverse.
	Do not iron.
	Do not use chlorine bleach.
	Wet-cleaning.
	Dry cleaning with hydrocarbons and trifluoro-trichloroethane.
	Dry at low temperatures.

CO	Cotton
LI	Linen
NY	Nylon
PA	Polyamide
PAN	Polyacrylic
PC	Acrylic
PES	Polyethersulfone
PL	Polyester
PP	Polypropylene
PU	Polyurethane
SE	Silk
VI	Viscose
WO	Wool
WV	virgin wool

Noah

Variants

CAT.C



R741 col.01

R742 col.05



R743 col.07

R744 col.08

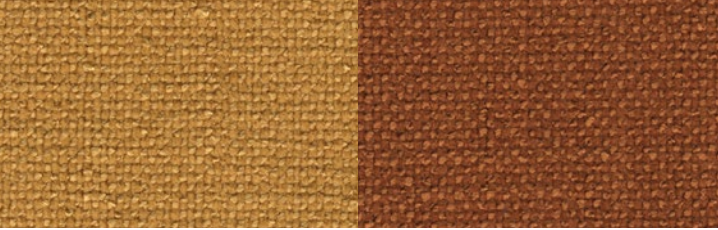
R745 col.18



R754 col.54

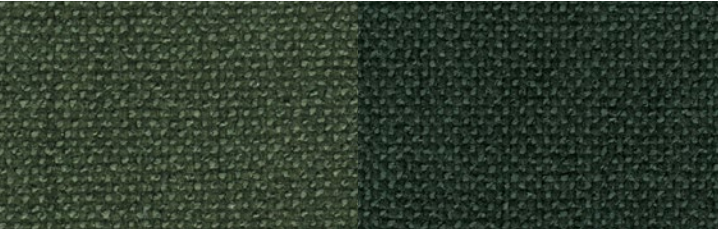
R752 col.52

R753 col.53



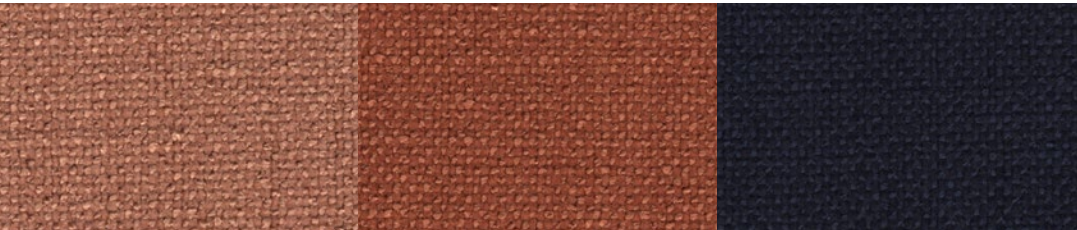
R746 col.20

R748 col.26



R750 col.38

R749 col.35



R755 col.71

R747 col.21

R751 col.47



The excellent quality of nuvola® leather comes from a careful selection of European cattle. nuvola® has a smooth and soft grain. The hides are dyed with a passing-through process, in the same dye as the finish. The colour card includes an extraordinary series of colours, obtained from a single quality of leather. The wide range of fashionable colours characterises nuvola® leather for its excellent range of use, tied to the most demanding design-proposals.

Inner side of the shell covered with micro-perforated leather.
Outer side of the shell covered with leather.

The shell of the Flow collection covered with Nuvola leather is fully covered with leather, micro-perforated in the inner side. The seams are always in the same color.

typology	Leather	washing information
composition	European bovine	
Tanning	Mineral	
Grain	Printed	
Dyeing	Penetrating	
Finishing	Polyurethane	
Covering	Pigmented	
Corrected	Grain	
Thickness	1,0 / 1,2 mm	
height	≥ 5 mq	
Dry friction	≥ 1.000 cycles	
Damp friction	≥ 250 cycles	
Finishing locking	≥ 3,0 n/cm2	
Flexing	≥ 50000 cycles	
Light fastness	≥ 4 blue scale	
Heat ageing	≥ 4 gray scale	
Fire resistance	ISO 1021:1-2, BS 5852 SOURCE 0-1, IMO FTP8 A652, CALIFORNIA TB 117-2013	
		For Standard I cleaning, dust with a soft dry cloth. Stains can be removed with a cloth and delicate cleaning products, such as neutral soap or cleansing milk. Dry immediately after cleaning, without rubbing the surface. Do not use solvents or stain removers.

Legenda

- Hand wash. Delicate wash. Maximum temperature: 30°/40°. Use neutral soap without optical whiteners.
- Wash at a maximum temperature of 30°. Pay attention to the maximum degrees indicated, they can range from 30° to 95 °.
- Dry clean only. Do not wash in water. Treat with care when damp.
- Dry clean with tetrachloroethylene, monofluorotrichloromethane, trifluorochloroethane, hydrocarbons. Severely limit the amount of water added and/or the mechanical action and washing and drying temperatures. Do not dry clean at automatic coin-operated laundry facilities.
- Dry clean with perchlorethylene
- Do not dry clean.
- Do not tumble dry.
- Tumble dry.
- Do not centrifugate.
- Iron at low temperature without steam (max 110°C).
- Ironing at moderate temperature (max 150°C).
- Iron on reverse.
- Do not iron.
- Do not use chlorine bleach.
- Wet-cleaning.
- Dry cleaning with hydrocarbons and trifluoro-trichloroethane.
- Dry at low temperatures.

- CO Cotton
- LI Linen
- NY Nylon
- PA Polyamide
- PAN Polyacrylic
- PC Acrylic
- PES Polyethersulfone
- PL Polyester
- PP Polypropylene
- PU Polyurethane
- SE Silk
- VI Viscose
- WO Wool
- WV virgin wool



R709 col.117

R715 col.199

R717 col.207



R710 col.131

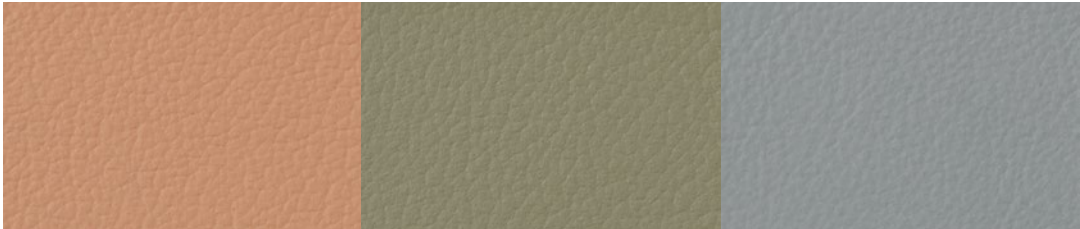
R713 col.147



R716 col.203

R711 col.141

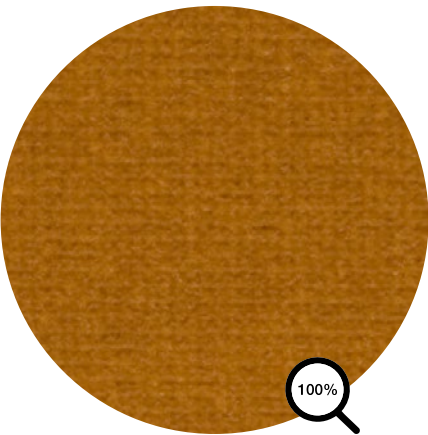
R708 col.101



R714 col.151

R712 col.143

R718 col.269



typology	Fabric
category	G
composition	100% CO
height	cm 140
weight	548 gr/mtl
martindale	80.000
fire resistance	BS 5852 CIGARETTE TEST - EN7027-7-2, IN CONJUNCTION WITH SUITABLE COMBUSTION MODIFIED FOAM

washing information



Legenda

	Hand wash. Delicate wash. Maximum temperature: 30°/40°. Use neutral soap without optical whiteners.
	Wash at a maximum temperature of 30°. Pay attention to the maximum degrees indicated, they can range from 30° to 95 °.
	Dry clean only. Do not wash in water. Treat with care when damp.
	Dry clean with tetrachloroethylene, monofluorotrichloromethane, trifluorochloroethane, hydrocarbons. Severely limit the amount of water added and/or the mechanical action and washing and drying temperatures. Do not dry clean at automatic coin-operated laundry facilities.
	Dry clean with perchlorethylene
	Do not dry clean.
	Do not tumble dry.
	Tumble dry.
	Do not centrifugate.
	Iron at low temperature without steam (max 110°C).
	Ironing at moderate temperature (max 150°C).
	Iron on reverse.
	Do not iron.
	Do not use chlorine bleach.
	Wet-cleaning.
	Dry cleaning with hydrocarbons and trifluoro-trichloroethane.
	Dry at low temperatures.

CO	Cotton
LI	Linen
NY	Nylon
PA	Polyamide
PAN	Polyacrylic
PC	Acrylic
PES	Polyethersulfone
PL	Polyester
PP	Polypropylene
PU	Polyurethane
SE	Silk
VI	Viscose
WO	Wool
WV	virgin wool

CAT.G



R663 col.02

R613 col.04

R612 col.05



R664 col.06

R556 col.11

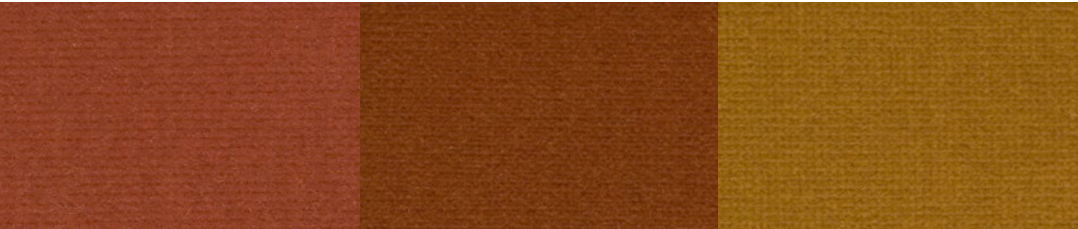
R557 col.13



R558 col.21

R559 col.22

R560 col.34

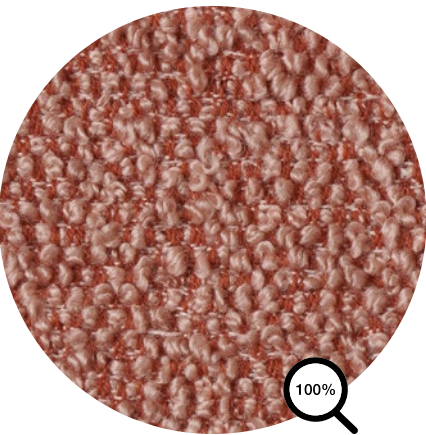


R561 col.38

R562 col.39

R563 col.40

CAT.E



typology	Fabric	washing information
category	E	
composition	13%CO 30%WO 25%PC 30%PL 2%PA	
height	cm 137	
weight	760 gr/mtl	
martindale	35.000	
pilling	4	
light fastness - light colours	4/5	
light fastness - dark/medium colours	5	
fire resistance	BS 5852 PART 1 SOURCE 0, SOURCE 1 CALIFORNIA TB 117-2013 MATCH TEST	

Legenda

	Hand wash. Delicate wash. Maximum temperature: 30°/40°. Use neutral soap without optical whiteners.	CO	Cotton
	Wash at a maximum temperature of 30°. Pay attention to the maximum degrees indicated, they can range from 30° to 95 °.	LI	Linen
	Dry clean only. Do not wash in water. Treat with care when damp.	NY	Nylon
	Dry clean with tetrachloroethylene, monofluorotrichloromethane, trifluorochloroethane, hydrocarbons. Severely limit the amount of water added and/or the mechanical action and washing and drying temperatures. Do not dry clean at automatic coin-operated laundry facilities.	PA	Polyamide
	Dry clean with perchlorethylene	PAN	Polyacrylic
	Do not dry clean.	PC	Acrylic
	Do not tumble dry.	PES	Polyethersulfone
	Tumble dry.	PL	Polyester
	Do not centrifugate.	PP	Polypropylene
	Iron at low temperature without steam (max 110°C).	PU	Polyurethane
	Ironing at moderate temperature (max 150°C).	SE	Silk
	Iron on reverse.	VI	Viscose
	Do not iron.	WO	Wool
	Do not use chlorine bleach.	WV	virgin wool
	Wet-cleaning.		
	Dry cleaning with hydrocarbons and trifluoro-trichloroethane.		
	Dry at low temperatures.		

Paradise

Variants

CAT.E

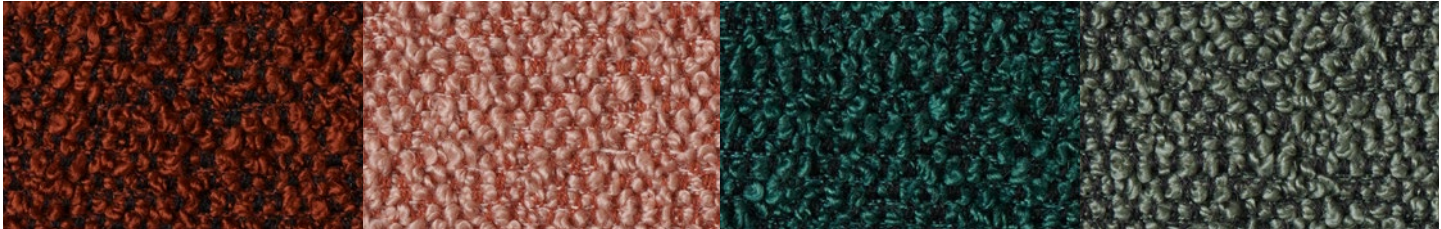


R542 col.060

R689 col.061

R541 col.042

R549 col.320



R543 col.120

R548 col.220

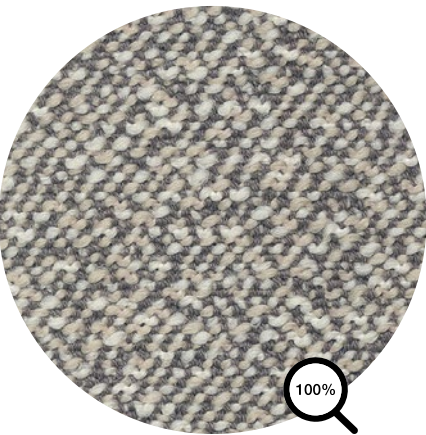
R544 col.121

R547 col.141



R546 col.140

R545 col.124



Nature at its best. The grainy feel and organic look of the crepe fabric are the perfect “translation” of the tactile values of nature. In two or three colours, Parigi shows both subtle and intense hues, with a high volume structure, while the special woven binding lends it an air of sophistication.

typology	Fabric
category	F
composition	94%WV 6%PA
height	cm 140
weight	910 gr/mtl
martindale	122.000 DIN EN ISO 12947-2
pilling	4/5
light fastness	5/8
fire resistance	BS 5852:2006 SOURCE 0 CIGARETTE - SOURCE 1 MATCH, CALIFORNIA TB 117-2013

washing information



Legenda

	Hand wash. Delicate wash. Maximum temperature: 30°/40°. Use neutral soap without optical whiteners.
	Wash at a maximum temperature of 30°. Pay attention to the maximum degrees indicated, they can range from 30° to 95 °.
	Dry clean only. Do not wash in water. Treat with care when damp.
	Dry clean with tetrachloroethylene, monofluorotrichloromethane, trifluorochloroethane, hydrocarbons. Severely limit the amount of water added and/or the mechanical action and washing and drying temperatures. Do not dry clean at automatic coin-operated laundry facilities.
	Dry clean with perchlorethylene
	Do not dry clean.
	Do not tumble dry.
	Tumble dry.
	Do not centrifugate.
	Iron at low temperature without steam (max 110°C).
	Ironing at moderate temperature (max 150°C).
	Iron on reverse.
	Do not iron.
	Do not use chlorine bleach.
	Wet-cleaning.
	Dry cleaning with hydrocarbons and trifluoro-trichloroethane.
	Dry at low temperatures.

CO	Cotton
LI	Linen
NY	Nylon
PA	Polyamide
PAN	Polyacrylic
PC	Acrylic
PES	Polyethersulfone
PL	Polyester
PP	Polypropylene
PU	Polyurethane
SE	Silk
VI	Viscose
WO	Wool
WV	virgin wool

Parigi

Variants

CAT.F



R429 col.001

R430 col.002

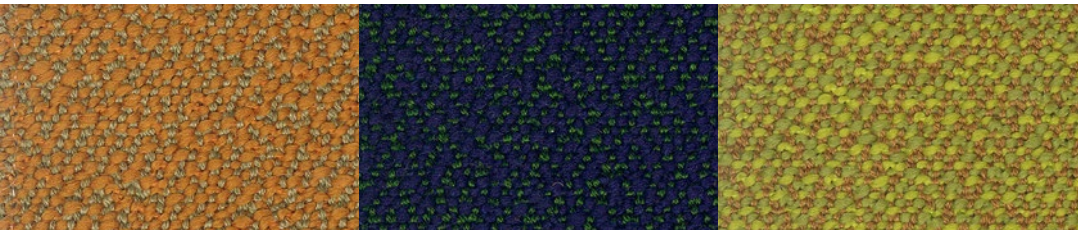
R431 col.003



R432 col.004

R433 col.005

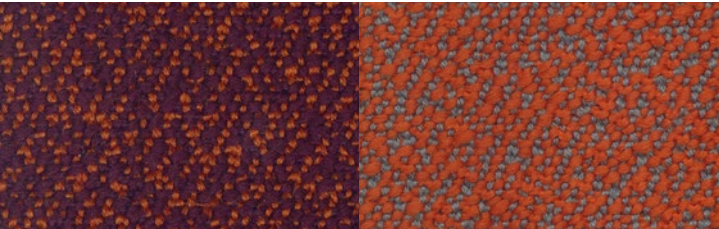
R434 col.006



R435 col.007

R436 col.008

R437 col.009



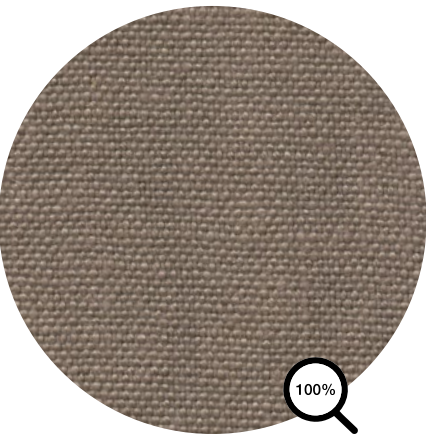
R438 col.010

R439 col.011

Portofino

CAT.E

Information



Portofino is linen used mainly for upholstery and upholstery, offered in 16 different variants. Thanks to the pumice stone treatment the surface of the fabric presents light veiled effect. Ideal for vintage upholstery. Furthermore, the stain-resistant treatment makes the Portofino ideal for the creation of finished products that must last over time while maintaining their characteristics unchanged.

typology	Fabric
category	E
composition	100%LI
height	cm 140
weight	630 gr/mtl
martindale	> 33.500
pilling	4
light fastness	4/5
dimensional stability	3%
fire resistance	BS 5852 SOURCE 0, CIGARETTE TEST

washing information	

Legenda

	Hand wash. Delicate wash. Maximum temperature: 30°/40°. Use neutral soap without optical whiteners.
	Wash at a maximum temperature of 30°. Pay attention to the maximum degrees indicated, they can range from 30° to 95 °.
	Dry clean only. Do not wash in water. Treat with care when damp.
	Dry clean with tetrachloroethylene, monofluorotrichloromethane, trifluorochloroethane, hydrocarbons. Severely limit the amount of water added and/or the mechanical action and washing and drying temperatures. Do not dry clean at automatic coin-operated laundry facilities.
	Dry clean with perchlorethylene
	Do not dry clean.
	Do not tumble dry.
	Tumble dry.
	Do not centrifugate.
	Iron at low temperature without steam (max 110°C).
	Ironing at moderate temperature (max 150°C).
	Iron on reverse.
	Do not iron.
	Do not use chlorine bleach.
	Wet-cleaning.
	Dry cleaning with hydrocarbons and trifluoro-trichloroethane.
	Dry at low temperatures.

CO	Cotton
LI	Linen
NY	Nylon
PA	Polyamide
PAN	Polyacrylic
PC	Acrylic
PES	Polyethersulfone
PL	Polyester
PP	Polypropylene
PU	Polyurethane
SE	Silk
VI	Viscose
WO	Wool
WV	virgin wool

CAT.E



R866 col.016

R867 col.019

R857 col.001



R864 col.012

R868 col.100

R858 col.002



R869 col.103

R859 col.006

R872 col.109



R871 col.108

R860 col.007

R861 col.008



R862 col.010

R863 col.011

R870 col.106



R865 col.014

CAT.E



Fabric made entirely of polypropylene yarn, Ten Stars Yarn, exclusive patented, dyed in mass with an air flow texturization able to give the fabric a look and a softness comparable to natural fibers.

It is used for the production of outdoor furniture and it is 100% recyclable and made in Italy.

Its composition guarantees permeability and breathability and make Ramiro fabric suitable for a prolonged use in outdoor environments without compromising its appearance, hand and color.

typology	Outdoor fabric
category	E
composition	100% POLYPROPYLENE - TEN STARS YARN, exclusive patented yarn
height	cm 138
weight	880 gr/mtl
martindale	50.000
pilling	5
light fastness	7
shrinkage %	-3
resistance to machine washing	5
resistance to hand washing	5
resistance to sea water	5
resistance to chlorinated/swimming pool water	4/5
fire resistance	CALIFORNIA TB 117-2013

washing information



Do not use detergents that contain oxidants or optical bleaches. In case of spillage of water or liquids (other than oil), the fabric must be dabbed clean using paper towel, and must not be rubbed.

Legenda

	Hand wash. Delicate wash. Maximum temperature: 30°/40°. Use neutral soap without optical whiteners.
	Wash at a maximum temperature of 30°. Pay attention to the maximum degrees indicated, they can range from 30° to 95 °.
	Dry clean only. Do not wash in water. Treat with care when damp.
	Dry clean with tetrachloroethylene, monofluorotrichloromethane, trifluorochloroethane, hydrocarbons. Severely limit the amount of water added and/or the mechanical action and washing and drying temperatures. Do not dry clean at automatic coin-operated laundry facilities.
	Dry clean with perchlorethylene
	Do not dry clean.
	Do not tumble dry.
	Tumble dry.
	Do not centrifugate.
	Iron at low temperature without steam (max 110°C).
	Ironing at moderate temperature (max 150°C).
	Iron on reverse.
	Do not iron.
	Do not use chlorine bleach.
	Wet-cleaning.
	Dry cleaning with hydrocarbons and trifluoro-trichloroethane.
	Dry at low temperatures.

CO	Cotton
LI	Linen
NY	Nylon
PA	Polyamide
PAN	Polyacrylic
PC	Acrylic
PES	Polyethersulfone
PL	Polyester
PP	Polypropylene
PU	Polyurethane
SE	Silk
VI	Viscose
WO	Wool
WV	virgin wool

Ramiro

Variants

CAT.E



R550 col.ecrù



R551 col.titanium



R553 col.dark orange



R552 col.pewter grey



R659 col.cream



R660 col.olive green



R661 col.denim blue



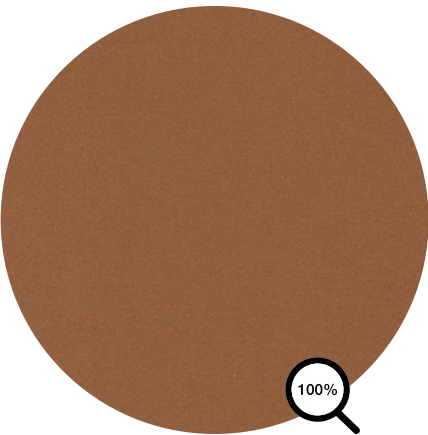
R662 col.navy blue



matt ecrù grey - Arpa cord wave 100% polyester



matt anthracite grey - Arpa cord wave 100% polyester



typology	Vegetable tanned bovine saddle-hide
thickness	2.4/2.6 mm
height	750 gr/mtl
weight	~2.000 gr/sqm
fire resistance	1IM, UNI 8456 (1987), UNI 9174 (1987), UNI 9174/A1 (1996), UNI 9177 (1987)
washing information	The upholstery is in totally natural, prime quality full grain saddle-hide. It is very sensitive: be careful of liquids or other substances that could alter the colour of the leather, and also of metallic or sharp parts that could leave marks on the surface.
cleaning and maintenance	Only use specific leather cleaners. / Avoid direct exposure to sunlight and sources of heat. / Avoid contact between light and dark colours, and between different materials. / Dust with a soft dry cloth.

Legenda

	Hand wash. Delicate wash. Maximum temperature: 30°/40°. Use neutral soap without optical whiteners.	CO	Cotton
	Wash at a maximum temperature of 30°. Pay attention to the maximum degrees indicated, they can range from 30° to 95 °.	LI	Linen
	Dry clean only. Do not wash in water. Treat with care when damp.	NY	Nylon
	Dry clean with tetrachloroethylene, monofluorotrichloromethane, trifluorochloroethane, hydrocarbons. Severely limit the amount of water added and/or the mechanical action and washing and drying temperatures. Do not dry clean at automatic coin-operated laundry facilities.	PA	Polyamide
	Dry clean with perchlorethylene	PAN	Polyacrylic
	Do not dry clean.	PC	Acrylic
	Do not tumble dry.	PES	Polyethersulfone
	Tumble dry.	PL	Polyester
	Do not centrifugate.	PP	Polypropylene
	Iron at low temperature without steam (max 110°C).	PU	Polyurethane
	Ironing at moderate temperature (max 150°C).	SE	Silk
	Iron on reverse.	VI	Viscose
	Do not iron.	WO	Wool
	Do not use chlorine bleach.	WV	virgin wool
	Wet-cleaning.		
	Dry cleaning with hydrocarbons and trifluoro-trichloroethane.		
	Dry at low temperatures.		

Saddle-hide

Variants



R900 col.02

R903 col.03



R904 col.26

R906 col.29



R908 col.15



typology	Fabric
category	F
composition	34%PL 31%WV 26%PC 4%CO 3%NY 2%LI
height	cm 140
weight	680 gr/mtl
martindale	45.000
pilling	3
light fastness	6/7
fire resistance	EN 1021-1/2, US CAL. BULL. 117-2013, NF D 60 013 WITH TREATMENT, SN 198 898 5.3 WITH TREATMENT, UPON REQUEST A BS 5852 CRIB 5 WITH TREATMENT E BS 5852 PART 1 WITH TREATMENT

washing information



Legenda

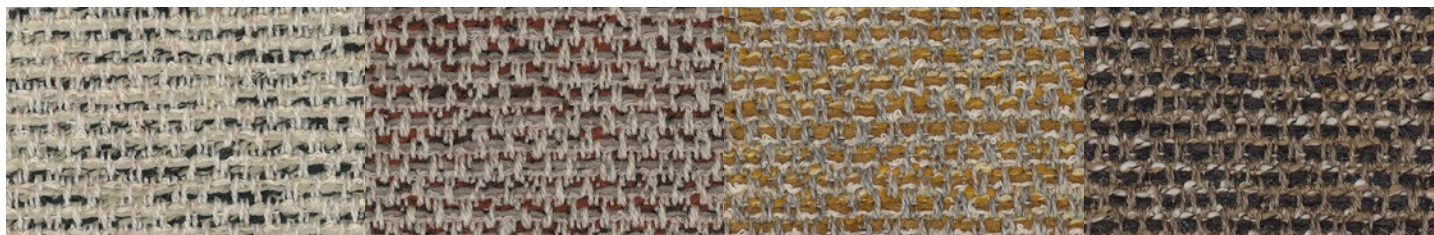
	Hand wash. Delicate wash. Maximum temperature: 30°/40°. Use neutral soap without optical whiteners.
	Wash at a maximum temperature of 30°. Pay attention to the maximum degrees indicated, they can range from 30° to 95 °.
	Dry clean only. Do not wash in water. Treat with care when damp.
	Dry clean with tetrachloroethylene, monofluorotrichloromethane, trifluorochloroethane, hydrocarbons. Severely limit the amount of water added and/or the mechanical action and washing and drying temperatures. Do not dry clean at automatic coin-operated laundry facilities.
	Dry clean with perchlorethylene
	Do not dry clean.
	Do not tumble dry.
	Tumble dry.
	Do not centrifugate.
	Iron at low temperature without steam (max 110°C).
	Ironing at moderate temperature (max 150°C).
	Iron on reverse.
	Do not iron.
	Do not use chlorine bleach.
	Wet-cleaning.
	Dry cleaning with hydrocarbons and trifluoro-trichloroethane.
	Dry at low temperatures.

CO	Cotton
LI	Linen
NY	Nylon
PA	Polyamide
PAN	Polyacrylic
PC	Acrylic
PES	Polyethersulfone
PL	Polyester
PP	Polypropylene
PU	Polyurethane
SE	Silk
VI	Viscose
WO	Wool
WV	virgin wool

Savanna

CAT.F

Variants



R589 col.122

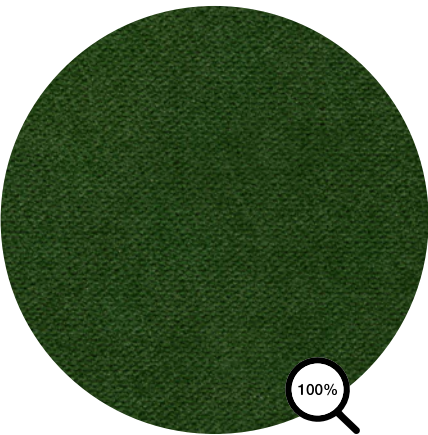
R593 col.622

R592 col.442

R591 col.262



R590 col.152



typology	Fabric
category	G
composition	100%PL
height	cm 140
weight	553 gr/mtl
martindale	>100.000
light fastness - light colours	5/6
light fastness - dark colours	>6
fire resistance	BS 5852 PART 1 SOURCE 0, SOURCE 1, FIRE REACTION CLASS 1, TECH.B.117:2013, 1IM

washing information



Legenda

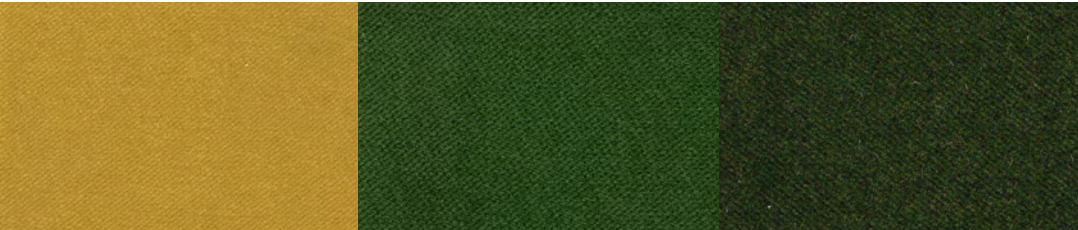
	Hand wash. Delicate wash. Maximum temperature: 30°/40°. Use neutral soap without optical whiteners.
	Wash at a maximum temperature of 30°. Pay attention to the maximum degrees indicated, they can range from 30° to 95 °.
	Dry clean only. Do not wash in water. Treat with care when damp.
	Dry clean with tetrachloroethylene, monofluorotrichloromethane, trifluorochloroethane, hydrocarbons. Severely limit the amount of water added and/or the mechanical action and washing and drying temperatures. Do not dry clean at automatic coin-operated laundry facilities.
	Dry clean with perchlorethylene
	Do not dry clean.
	Do not tumble dry.
	Tumble dry.
	Do not centrifugate.
	Iron at low temperature without steam (max 110°C).
	Ironing at moderate temperature (max 150°C).
	Iron on reverse.
	Do not iron.
	Do not use chlorine bleach.
	Wet-cleaning.
	Dry cleaning with hydrocarbons and trifluoro-trichloroethane.
	Dry at low temperatures.

CO	Cotton
LI	Linen
NY	Nylon
PA	Polyamide
PAN	Polyacrylic
PC	Acrylic
PES	Polyethersulfone
PL	Polyester
PP	Polypropylene
PU	Polyurethane
SE	Silk
VI	Viscose
WO	Wool
WV	virgin wool

Sunday

Variants

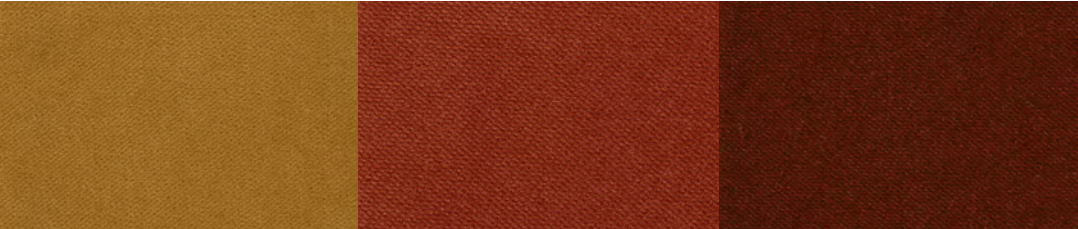
CAT.G



R569 col.015

R573 col.009

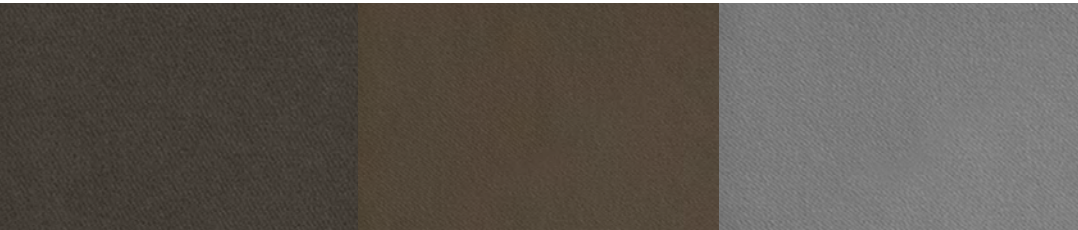
R572 col.008



R568 col.014

R571 col.006

R570 col.011



R609 col.030

R611 col.034

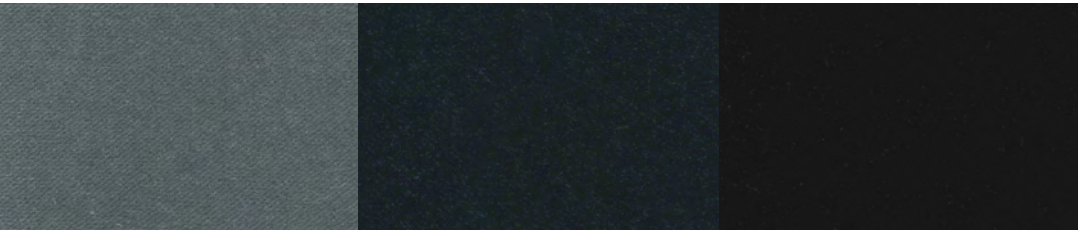
R608 col.023



R574 col.038

R607 col.022

R610 col.032



R605 col.002

R606 col.004

R575 col.027



typology	Fabric
category	C
composition	68%PC 16%PL 16%CO
width	cm 138/140
weight	693 gr/mtl
martindale	35.000
pilling	4
light fastness	5
fire rsistence	TB117-2013, CIGARETTE EN1021-1, CIGARETTE BS5852-1979

washing information



Legenda

	Hand wash. Delicate wash. Maximum temperature: 30°/40°. Use neutral soap without optical whiteners.
	Wash at a maximum temperature of 30°. Pay attention to the maximum degrees indicated, they can range from 30° to 95 °.
	Dry clean only. Do not wash in water. Treat with care when damp.
	Dry clean with tetrachloroethylene, monofluorotrichloromethane, trifluorochloroethane, hydrocarbons. Severely limit the amount of water added and/or the mechanical action and washing and drying temperatures. Do not dry clean at automatic coin-operated laundry facilities.
	Dry clean with perchlorethylene
	Do not dry clean.
	Do not tumble dry.
	Tumble dry.
	Do not centrifugate.
	Iron at low temperature without steam (max 110°C).
	Ironing at moderate temperature (max 150°C).
	Iron on reverse.
	Do not iron.
	Do not use chlorine bleach.
	Wet-cleaning.
	Dry cleaning with hydrocarbons and trifluoro-trichloroethane.
	Dry at low temperatures.

CO	Cotton
LI	Linen
NY	Nylon
PA	Polyamide
PAN	Polyacrylic
PC	Acrylic
PES	Polyethersulfone
PL	Polyester
PP	Polypropylene
PU	Polyurethane
SE	Silk
VI	Viscose
WO	Wool
WV	virgin wool

Taiga

CAT.C

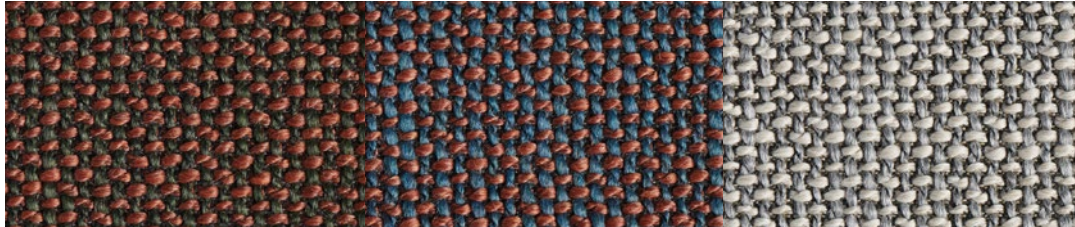
Variants



R599 col.01/1

R600 col.02/1

R601 col.19/1



R602 col.19/2

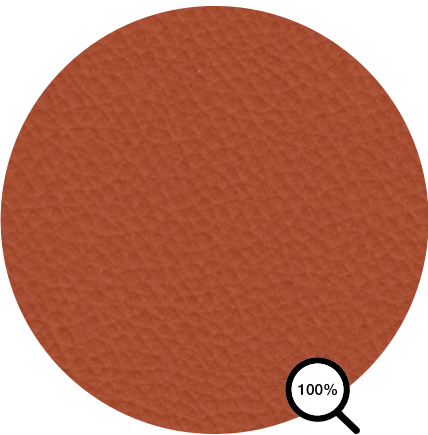
R603 col.71/1

R604 col.90/1

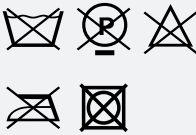
Time TL15

CAT.B

Information



typology	Artificial leather		
category	B		
composition	71%PVC 6%PU 14%CO 9%PES		
width	cm 140		
weight	660 gr/m²		
martindale	100.000		
thickness	1		
light fastness	6/7		
fire rsistence	11M; IMO-FTP; CALIFORNIA TB 117; BS 7176/EN1021 WITH THE OPTION OF CRIB 5 TREATMENT ON REQUEST.		
washing information	<p>Ordinary dirt stains such as coffee, soft drinks, milk, beer, etc. can be removed by using a clean cloth or soft sponge and dabbing the stain with soapy water. Remove the soap solution by wiping the area with a cloth and clean water. Do not use chlorine, alcohol, or solvents. Warning: non-colourfast fabrics (such as jeans or similar items) can leave stubborn stains or spots on light coloured eco leather.</p>		



Legenda

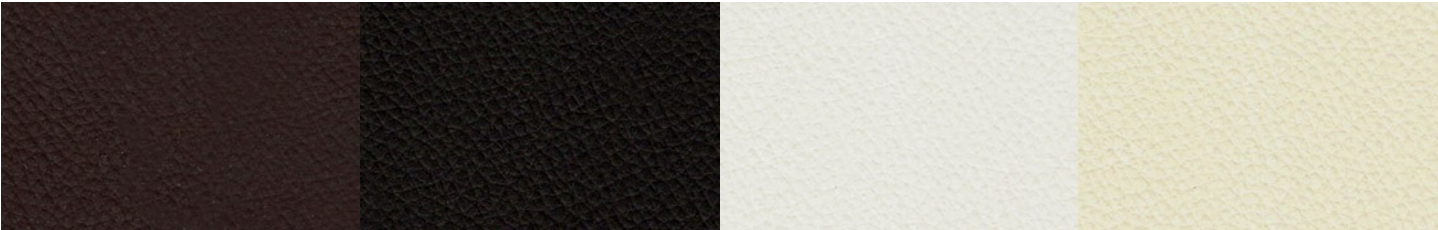
	Hand wash. Delicate wash. Maximum temperature: 30°/40°. Use neutral soap without optical whiteners.
	Wash at a maximum temperature of 30°. Pay attention to the maximum degrees indicated, they can range from 30° to 95 °.
	Dry clean only. Do not wash in water. Treat with care when damp.
	Dry clean with tetrachloroethylene, monofluorotrichloromethane, trifluorochloroethane, hydrocarbons. Severely limit the amount of water added and/or the mechanical action and washing and drying temperatures. Do not dry clean at automatic coin-operated laundry facilities.
	Dry clean with perchlorethylene
	Do not dry clean.
	Do not tumble dry.
	Tumble dry.
	Do not centrifugate.
	Iron at low temperature without steam (max 110°C).
	Ironing at moderate temperature (max 150°C).
	Iron on reverse.
	Do not iron.
	Do not use chlorine bleach.
	Wet-cleaning.
	Dry cleaning with hydrocarbons and trifluoro-trichloroethane.
	Dry at low temperatures.

CO	Cotton
LI	Linen
NY	Nylon
PA	Polyamide
PAN	Polyacrylic
PC	Acrylic
PES	Polyethersulfone
PL	Polyester
PP	Polypropylene
PU	Polyurethane
SE	Silk
VI	Viscose
WO	Wool
WV	virgin wool

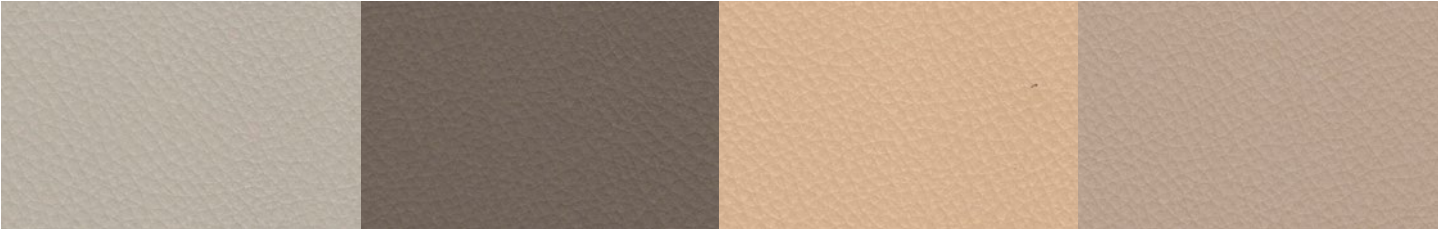
Time TL15

Variants

CAT.B



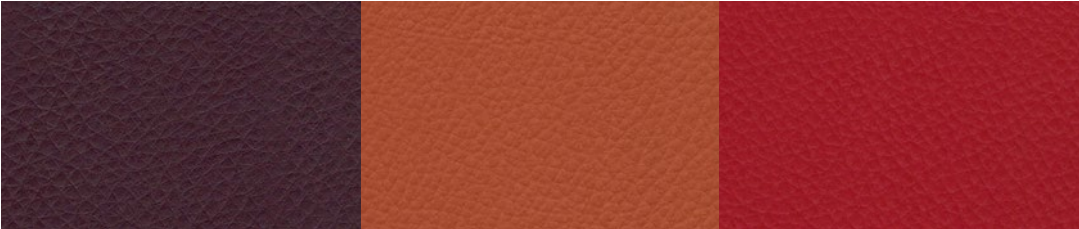
R885 col.17500 R886 col.16 R887 col.01 R879 col.6747



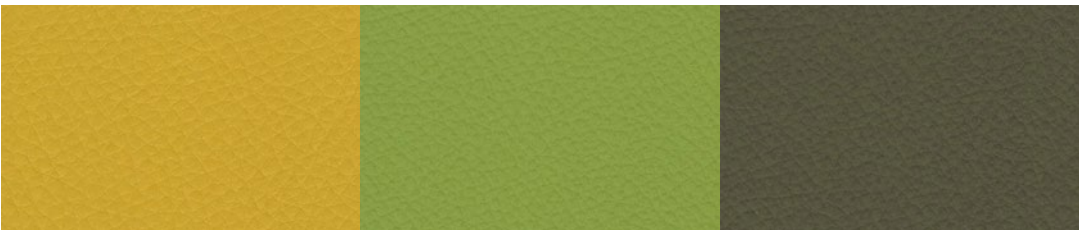
R880 col.6776 R881 col.5800 R882 col.5992 R883 col.10645



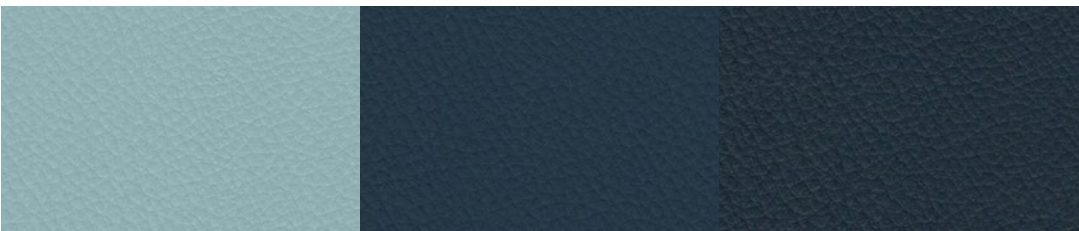
R884 col.11022 R888 col.6777 R889 col.6791 R890 col.6792



R891 col.13800 R892 col.12410 R893 col.7390



R894 col.11990 R895 col.16086 R896 col.16280



R897 col.15008 R898 col.15120 R899 col.15660

Time TL15

Other colors available. +5% from the list price

CAT.B



col.1-0003

col.10023

col.10120

col.10180

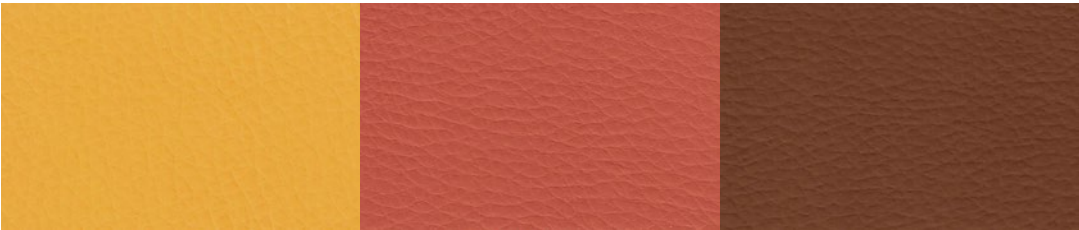


col.5991

col.10125

col.10232

col.6783



col.12070

col.12300

col.5796



col.12750

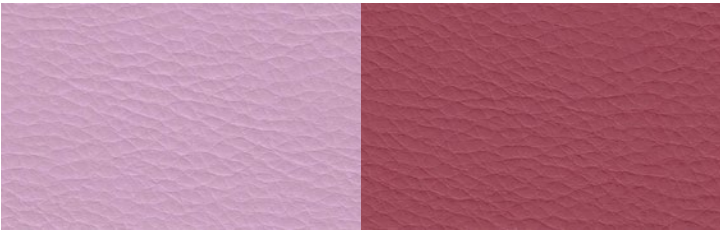
col.5804



col.13610

col.13650

col.15301



col.13400

col.13010

Time TL15

Other colors available. +5% from the list price

CAT.B



col.15103

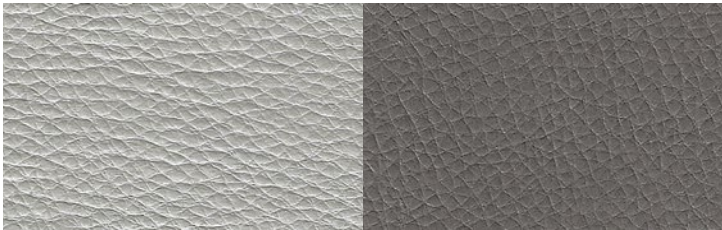
col.16030

col.15137



col.17500

col.5799

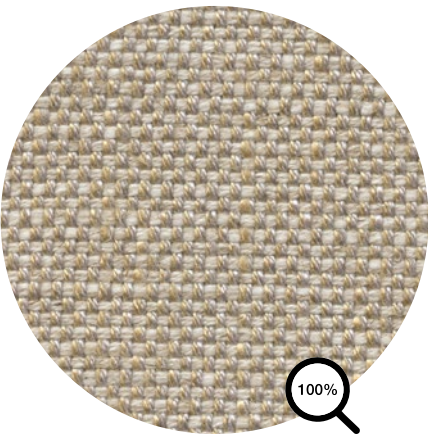


col.10810

col.6259



col.10800



typology	Fabric
category	B
composition	67%VI 33%LI
height	cm 138/140
weight	810 gr/mtl
martindale	> 20.000
pilling	4
light fastness	4/5
fire resistance	BS 5852 SOURCE 0, CIGARETTE TEST

washing information



Legenda

	Hand wash. Delicate wash. Maximum temperature: 30°/40°. Use neutral soap without optical whiteners.
	Wash at a maximum temperature of 30°. Pay attention to the maximum degrees indicated, they can range from 30° to 95 °.
	Dry clean only. Do not wash in water. Treat with care when damp.
	Dry clean with tetrachloroethylene, monofluorotrichloromethane, trifluorochloroethane, hydrocarbons. Severely limit the amount of water added and/or the mechanical action and washing and drying temperatures. Do not dry clean at automatic coin-operated laundry facilities.
	Dry clean with perchlorethylene
	Do not dry clean.
	Do not tumble dry.
	Tumble dry.
	Do not centrifugate.
	Iron at low temperature without steam (max 110°C).
	Ironing at moderate temperature (max 150°C).
	Iron on reverse.
	Do not iron.
	Do not use chlorine bleach.
	Wet-cleaning.
	Dry cleaning with hydrocarbons and trifluoro-trichloroethane.
	Dry at low temperatures.

CO	Cotton
LI	Linen
NY	Nylon
PA	Polyamide
PAN	Polyacrylic
PC	Acrylic
PES	Polyethersulfone
PL	Polyester
PP	Polypropylene
PU	Polyurethane
SE	Silk
VI	Viscose
WO	Wool
WV	virgin wool

Todi

CAT.B

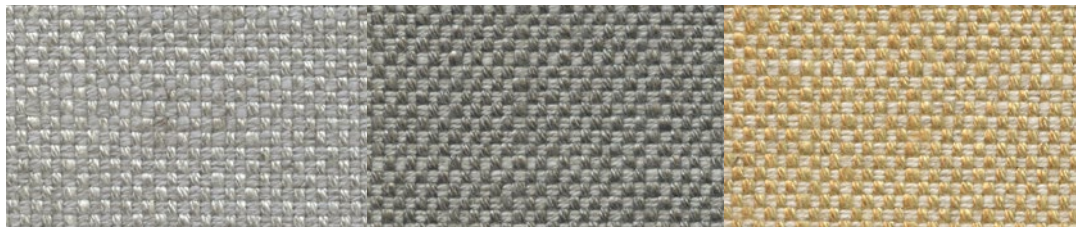
Variants



R851 col.13

R850 col.11

R846 col.07



R849 col.10

R848 col.09

R852 col.15

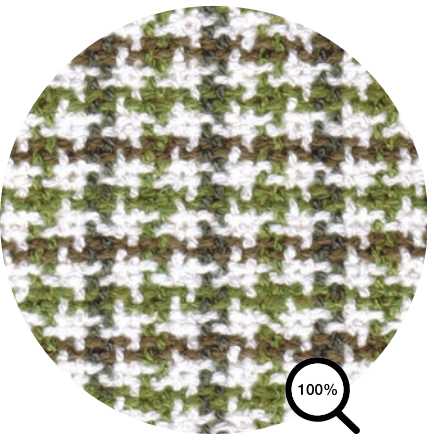


R855 col.19

William

CAT.D

Information



typology	Fabric
category	D
composition	56%CO 30%VI 14%LI
height	cm 140
weight	900 gr/mtl
martindale	36.000
pilling	3/4
light fastness	4/5
fire resistance	BS 5852 SOURCE 0, CIGARETTE TEST

washing information



Legenda

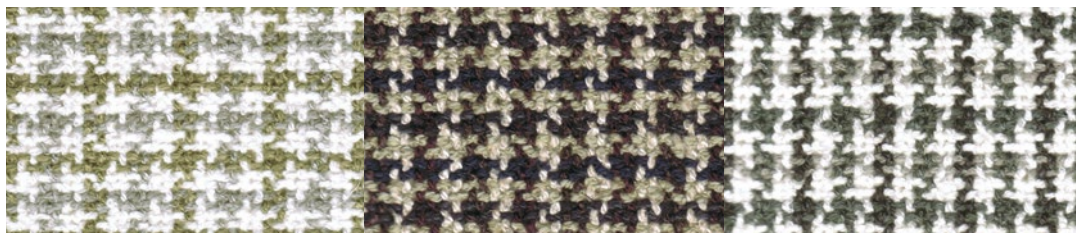
	Hand wash. Delicate wash. Maximum temperature: 30°/40°. Use neutral soap without optical whiteners.
	Wash at a maximum temperature of 30°. Pay attention to the maximum degrees indicated, they can range from 30° to 95 °.
	Dry clean only. Do not wash in water. Treat with care when damp.
	Dry clean with tetrachloroethylene, monofluorotrichloromethane, trifluorochloroethane, hydrocarbons. Severely limit the amount of water added and/or the mechanical action and washing and drying temperatures. Do not dry clean at automatic coin-operated laundry facilities.
	Dry clean with perchlorethylene
	Do not dry clean.
	Do not tumble dry.
	Tumble dry.
	Do not centrifugate.
	Iron at low temperature without steam (max 110°C).
	Ironing at moderate temperature (max 150°C).
	Iron on reverse.
	Do not iron.
	Do not use chlorine bleach.
	Wet-cleaning.
	Dry cleaning with hydrocarbons and trifluoro-trichloroethane.
	Dry at low temperatures.

CO	Cotton
LI	Linen
NY	Nylon
PA	Polyamide
PAN	Polyacrylic
PC	Acrylic
PES	Polyethersulfone
PL	Polyester
PP	Polypropylene
PU	Polyurethane
SE	Silk
VI	Viscose
WO	Wool
WV	virgin wool

William

CAT.D

Variants



R375 col.423.080

R372 col.423.005

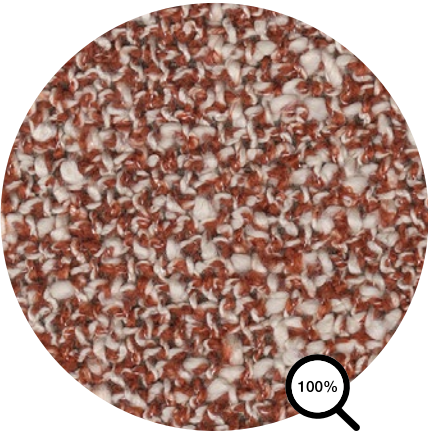
R376 col.423.091



R371 col.423.004

R373 col.423.051

R374 col.423.072



typology	Fabric
category	G
composition	65%CO 20%PAN 15%PL
height	cm 140
weight	750 gr/mtl
martindale	70.000
pilling	5
light fastness	5/6
fire resistance	BS 5852 CRIB 5 WITH TREATMENT, EN 1021-1

washing information



Legenda

	Hand wash. Delicate wash. Maximum temperature: 30°/40°. Use neutral soap without optical whiteners.
	Wash at a maximum temperature of 30°. Pay attention to the maximum degrees indicated, they can range from 30° to 95 °.
	Dry clean only. Do not wash in water. Treat with care when damp.
	Dry clean with tetrachloroethylene, monofluorotrichloromethane, trifluorochloroethane, hydrocarbons. Severely limit the amount of water added and/or the mechanical action and washing and drying temperatures. Do not dry clean at automatic coin-operated laundry facilities.
	Dry clean with perchlorethylene
	Do not dry clean.
	Do not tumble dry.
	Tumble dry.
	Do not centrifugate.
	Iron at low temperature without steam (max 110°C).
	Ironing at moderate temperature (max 150°C).
	Iron on reverse.
	Do not iron.
	Do not use chlorine bleach.
	Wet-cleaning.
	Dry cleaning with hydrocarbons and trifluoro-trichloroethane.
	Dry at low temperatures.

CO	Cotton
LI	Linen
NY	Nylon
PA	Polyamide
PAN	Polyacrylic
PC	Acrylic
PES	Polyethersulfone
PL	Polyester
PP	Polypropylene
PU	Polyurethane
SE	Silk
VI	Viscose
WO	Wool
WV	virgin wool

Zero

CAT.G

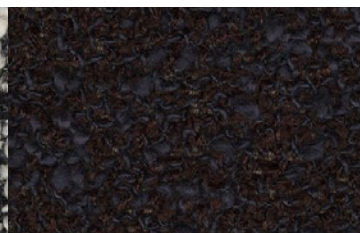
Variants



R594 col.001



R598 col.011



R595 col.004

R597 col.010



R596 col.008